

Process ID # 65854

R.P.O. Vol. 68 Fol. 337

C.T. Vol. 3632 Fol. 351

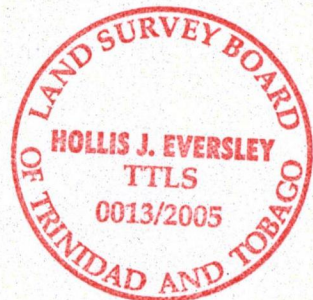
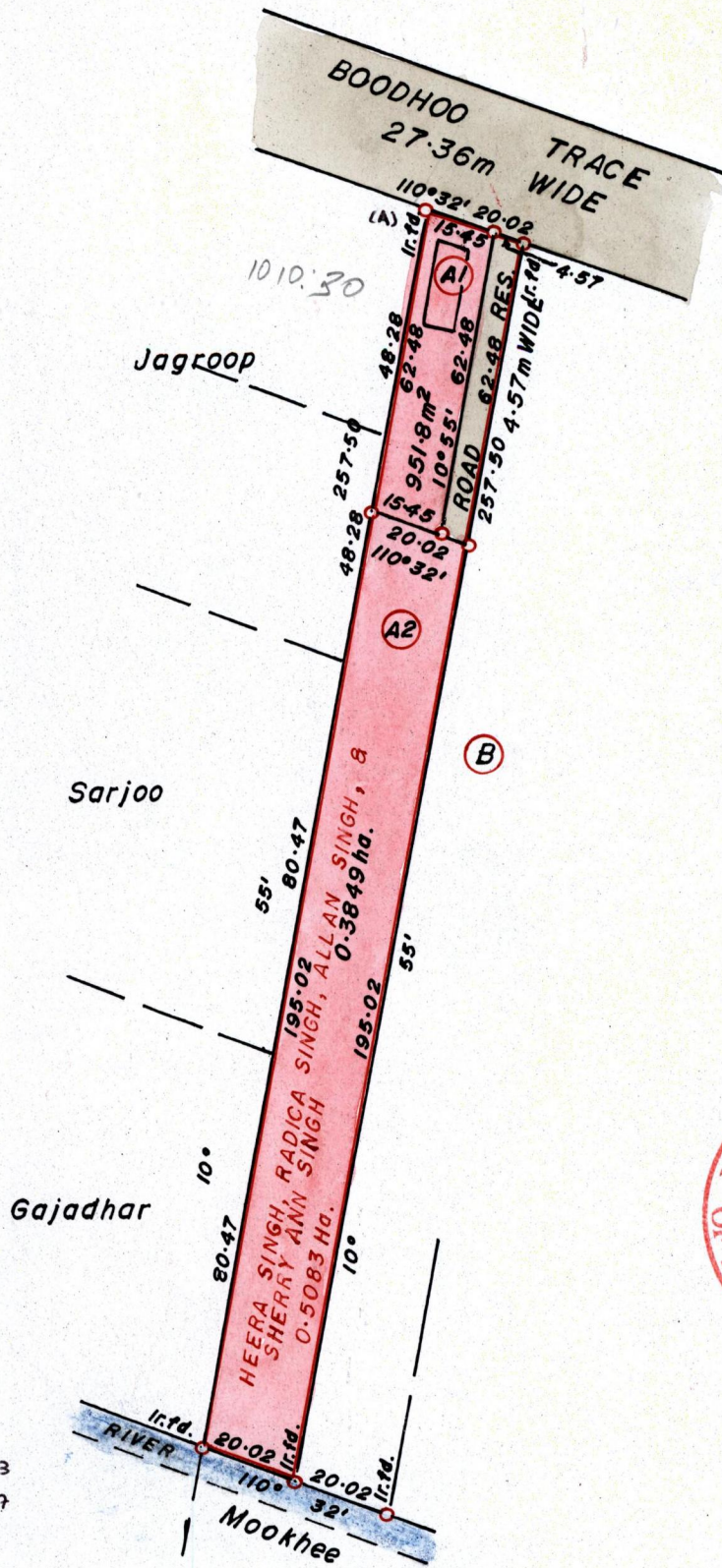
Vol. 4859 Fol. 515

Ward of Naparima.

County of Victoria.

Cadastral Sheet G13.B. 63F

1/a



(A) - 670114.13
1126849.17
W45 84

Approved *[Signature]*
Director of Surveys.
2506/11/30

Bk. 963 : 15
1219 : 23
○ Denotes Iron Put except otherwise stated.
Scale 1 : 1500.
Distances are in METRES.

Plan of 2 Parcels of land coloured Pink in the Ward of Naparima.
Containing together zero point four eight zero one hectare.
Surveyed by me, with due authority, in March 2005.
In accordance with Reg.25(1) of the Land Surveyors' Regulations 1998,
I certify that this plan is correct.

Checked by *mm* 21/11/06

Entered *CM15* 08-07-2012 *[Signature]* Trinidad and Tobago Land Surveyor 19th April 2005.

A1 -

A2 - Vol. 4859 Fol. 525 NIGEL MAHABIR & INDRANI N. RAMPERSAO-MAHABIR

