

Process No 65839

Vol. 4429 Fol. 223

R.P.O. Vol 79 Fol. 245

C.T. Vol. 1167 Fol. 455

U.P.R.N.

"A"

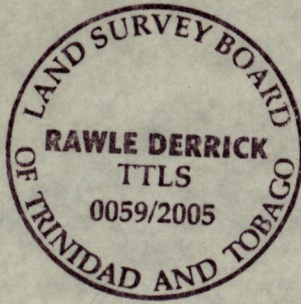
Ward of Siparia

County of St. Patrick

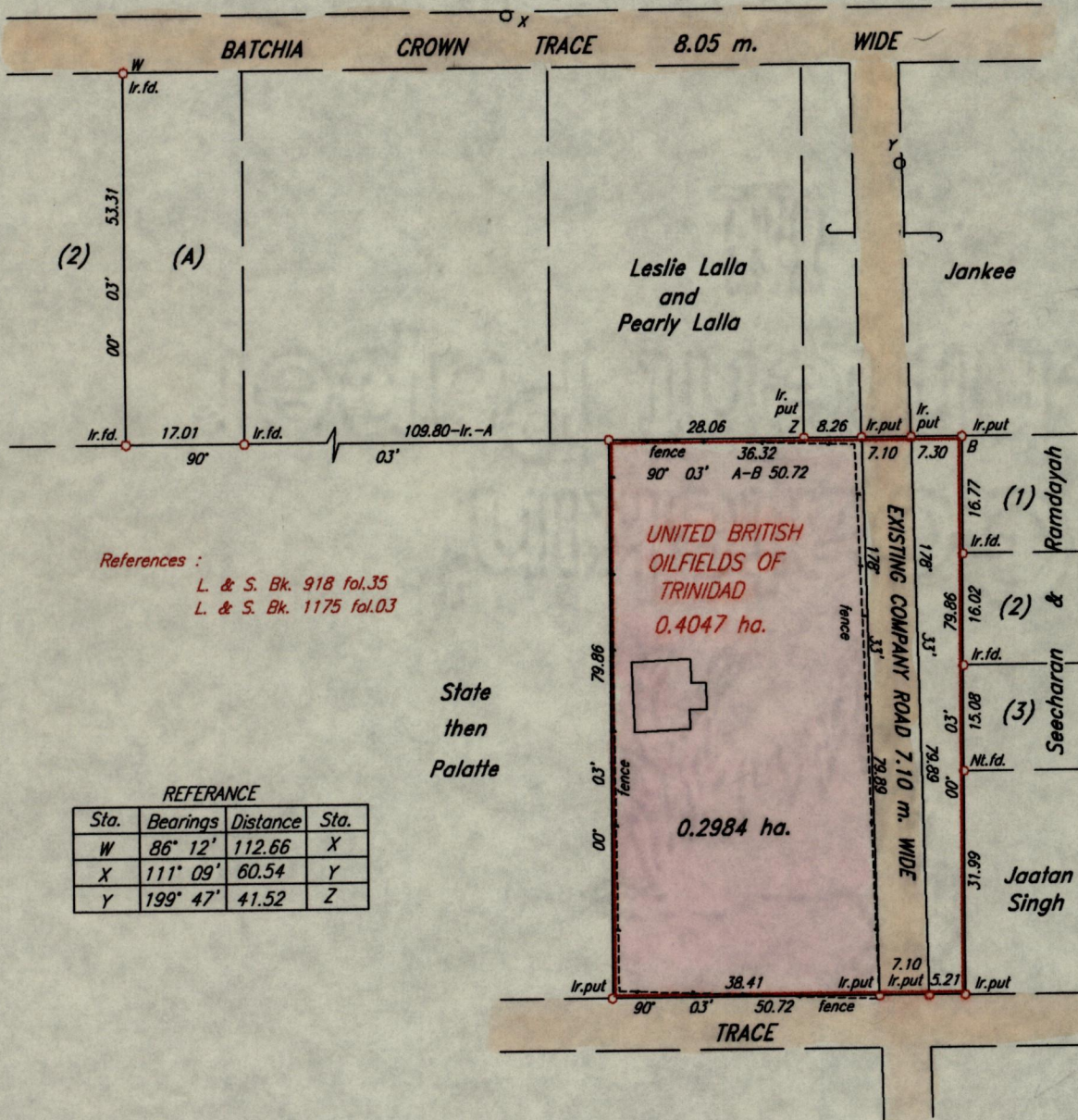
Cadastral Sheet G.13.F&J 63E

2/d

This is the Plan referred to as marked "A" in the Second Schedule of the prefixed Memorandum of Transfer.



Attorney at Law



References :

- L. & S. Bk. 918 fol.35
- L. & S. Bk. 1175 fol.03

REFERENCE

Sta.	Bearings	Distance	Sta.
W	86° 12'	112.66	X
X	111° 09'	60.54	Y
Y	199° 47'	41.52	Z

Approved.....

Director of Surveys

2005-1-31

Scale 1 : 1000

Bearings are Cassini Grid based on Solar Observations

Note: To obtain compass bearings add/subtract minutes Distances are in metres
Plan of a parcel of land coloured pink in the Ward of Siparia
Containing zero point two nine eight four hectares
Surveyed by me, with due authority in July 1990
In accordance with Regulation 25 (1) of the Land Surveyors' Regulations 1998,
I certify that this plan is correct.

Checked by.....

Rawle Derrick T.T.L.S.

Entered..... Trinidad and Tobago Land Surveyor, January 21, 2005