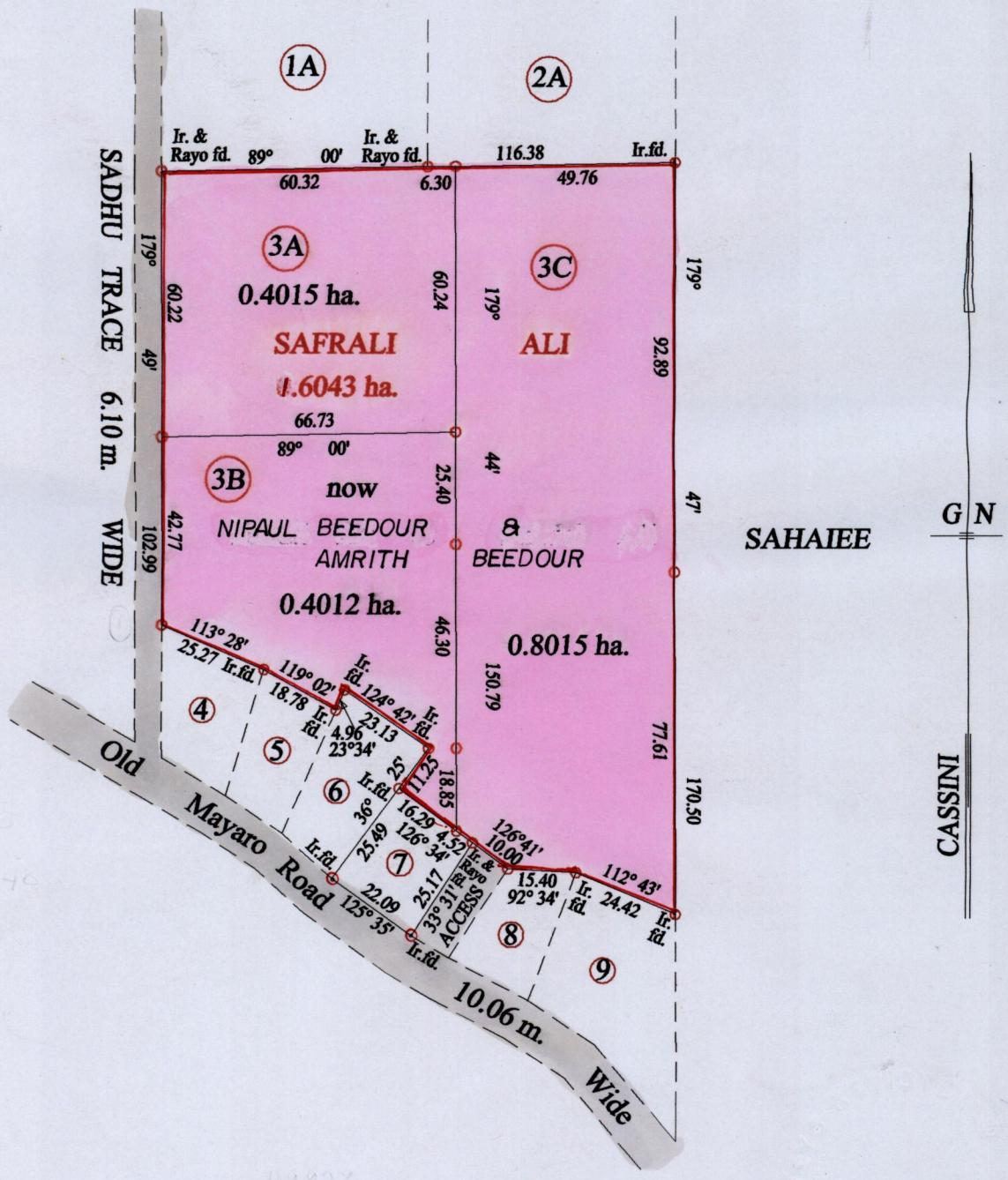
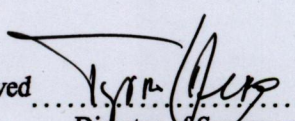


VOL. 4830 FOL. 339

Process 65803



Approved 
 Director of Surveys
 2008.4.12

Vide Plan J.D.147

○ Denotes Iron put except stated otherwise.

SCALE : 1:1500

Note: Bearings are cassini grid based on solar observations Distances are in metres

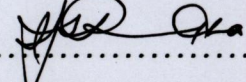
PLAN of 3 Parcels of land coloured pink in the Ward of Charuma

Containing together one point six zero four two hectares

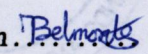
Surveyed by me, with due authority, in May 2005

In accordance with Regulation 25 (1) of the Land Surveyors' Regulations 1998,

I certify that this plan is correct.

Checked by  24/03/06



Entered on  Trinidad & Tobago Land Surveyor 3.10.2005

3A. Vol. 4830 Fol. 347 NIPANL BEEDOUR

3B. Vol. 4830 Fol. 349 NIPANL BEEDOUR

3C. Vol. 4830 Fol. 357 AMRITH BEEDOUR

ALI
SARAIL
4043 ha

