

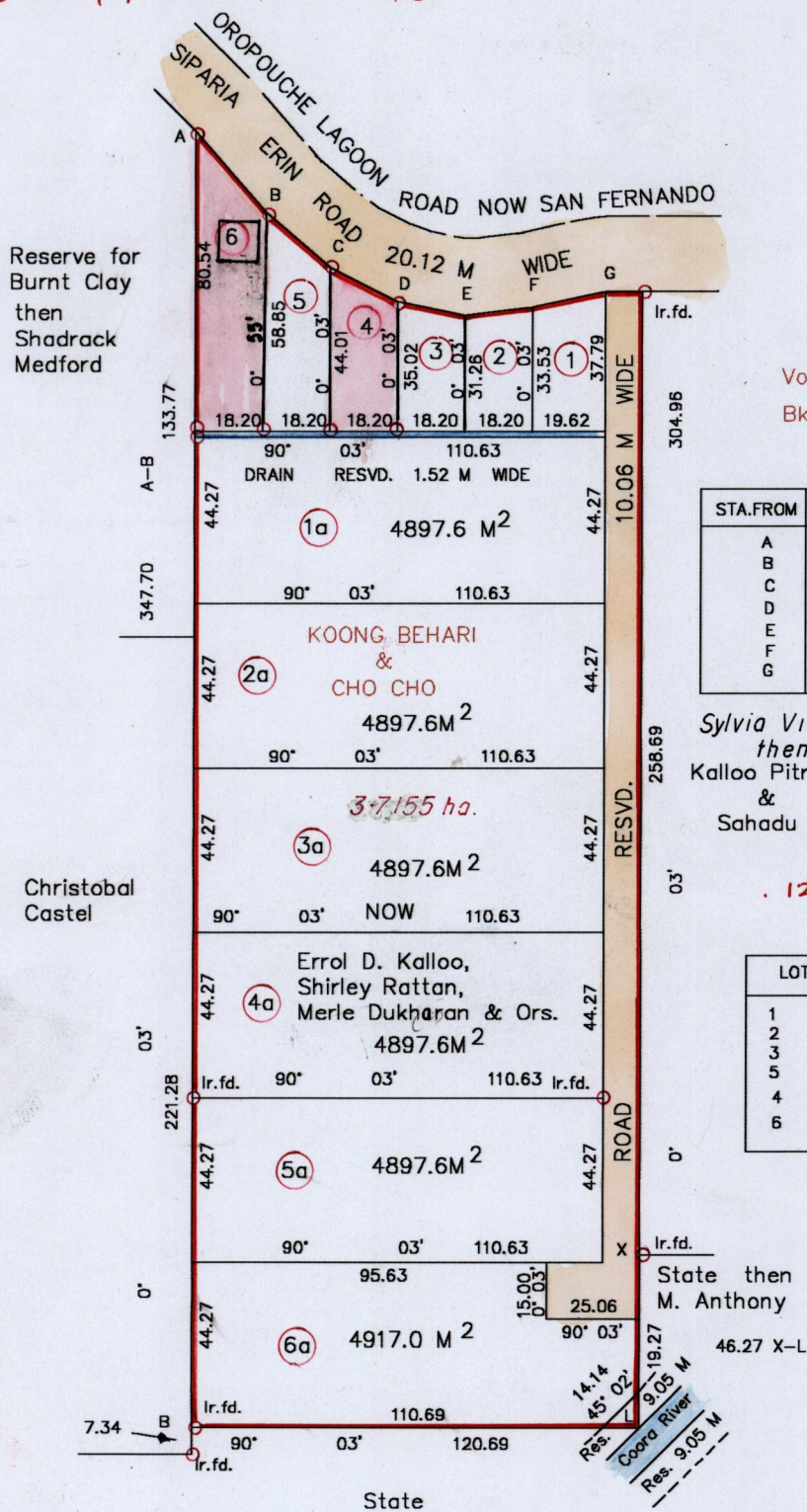
Process ID# 65801

R.P.O Vol. 85 Fol 509

C.T Vol. 701 Fol. 259

Vol. 49 55 Fol. 181

Ward of Siparia  
County of St. Patrick  
Cadastral Sheet G 12 P  $\frac{63E}{4/c}$  &  $\frac{73B}{2/a}$



STA.FROM	STA.TO	BG.	DIST.
A	B	138° 42'	28.90
B	C	130° 38'	22.80
C	D	116° 21'	20.30
D	E	101° 44'	18.58
E	F	82° 57'	18.34
F	G	77° 50'	20.09
G	H	90° 03'	10.06

Sylvia Victor  
then  
Kalloo Pitram  
&  
Sahadu

LOT NO.	AREA
1	700.0 M <sup>2</sup>
2	589.6 M <sup>2</sup>
3	603.1 M <sup>2</sup>
5	916.5 M <sup>2</sup>
4	719.2 M <sup>2</sup>
6	1304.4 M <sup>2</sup>



Bearings are CASSINI GRID based on solar obs.

○ Denotes iron put except otherwise stated

Approved

*[Signature]*

Director of Surveys 2003.2.26

SCALE 1: 2000

Distances are in metres

Note: To obtain compass bearings add/subtract minutes

PLAN of 2 Parcels of land coloured pink in the Ward of Siparia  
Containing Together two thousand and twenty three point six square metres

Surveyed by me, with due authority, in May 2001

In accordance with regulation (25) (1) of the Land Surveyors' Regulations 1998 I certify  
that this plan is correct.

Checked by *[Signature]*

Entered *[Signature]* Trinidad and Tobago Land Surveyor 26<sup>th</sup> August 2002

A. VOL. 4955 FOL. 229 Errol Kalloo, Merte Dukharan, Joyce Sakhrani,  
Shirley Rattan & Sydney Kalloo.

B. VOL. 4955 FOL. 225 Errol Kalloo, Merte Dukharan, Joyce Sakhrani,  
Shirley Rattan & Sydney Kalloo.



2-SEP 2002  
Lands and  
Surveys  
Division