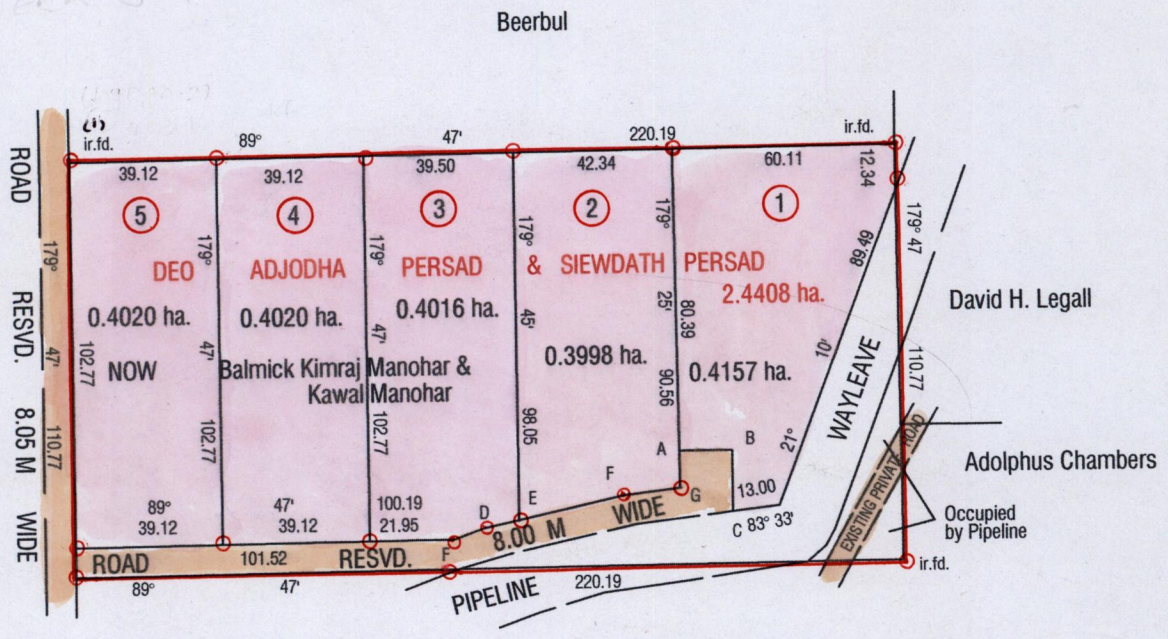
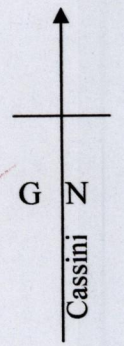


Process ID# 65746  
 R.P.O Vol. 96 Fol 285

C.T Vol. 3217 Fol. 133  
 Vol. 4913 Fol. 15

Bk. 391 Fol 79

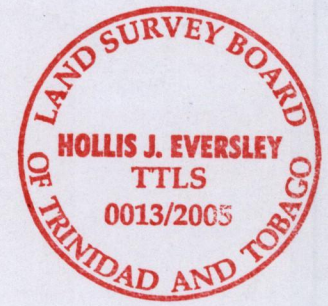
Ward of Siparia  
 County of St. Patrick  
 Cadastral Sheet G 13 J  $\frac{63 F}{3/a \& 3/c}$



Adolphus Chambers

A - B	= 90° 00'	14.11
B - C	= 180° 00'	16.64
F - D	= 70° 58'	8.25
D - E	= 77° 55'	10.01
E - F	= 77° 55'	28.43
F - G	= 83° 33'	15.13

(1) - 669280.73  
 1123663.50  
 209384.



Approved *[Signature]*  
 Director of Surveys  
 2006.7.14

○ Denotes Iron put except otherwise stated  
 SCALE : 1 / 2000

Bearings are Cassini Grid based on Solar Obs  
 Note: To obtain compass bearings add/subtract minutes Distances are in metres

PLAN of 5 Parcels of land coloured pink in the Ward of Siparia  
 Containing together two point zero two one one hectares  
 Surveyed by me, with due authority, in March 2005

In accordance with Regulation 25 (1) of the Land Surveyors' Regulations 1998,  
 I certify that this plan is correct.

Checked by *[Signature]* 11/7/06  
 Entered *[Signature]* Trinidad and Tobago Land Surveyor 17<sup>th</sup> December 2005

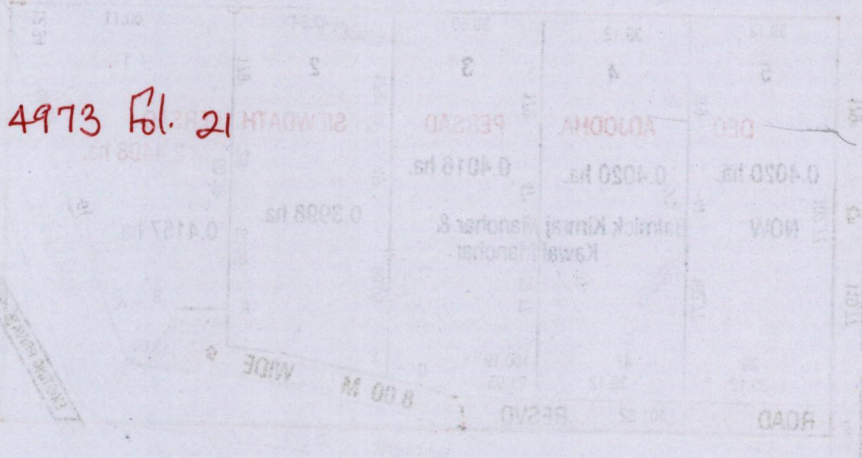
1 -

2 - Vol. 5118 Fol. 207

3 - Vol 4978 Fol 51

4 - Vol. 4973 Fol. 21

5 -



1375/37