

1287

1287

65/65

Process ID# 65720

Cadastral Sheet G.13.B. & C. 63C, 63F

Ward of Naparima

37/b, 17/b

REMAINING PORTION

County of Victoria

Vol 4932 Fol 121

R.P.O. Vol. 7 Fol. 603

C.T. Vol. 140 Fol. 407

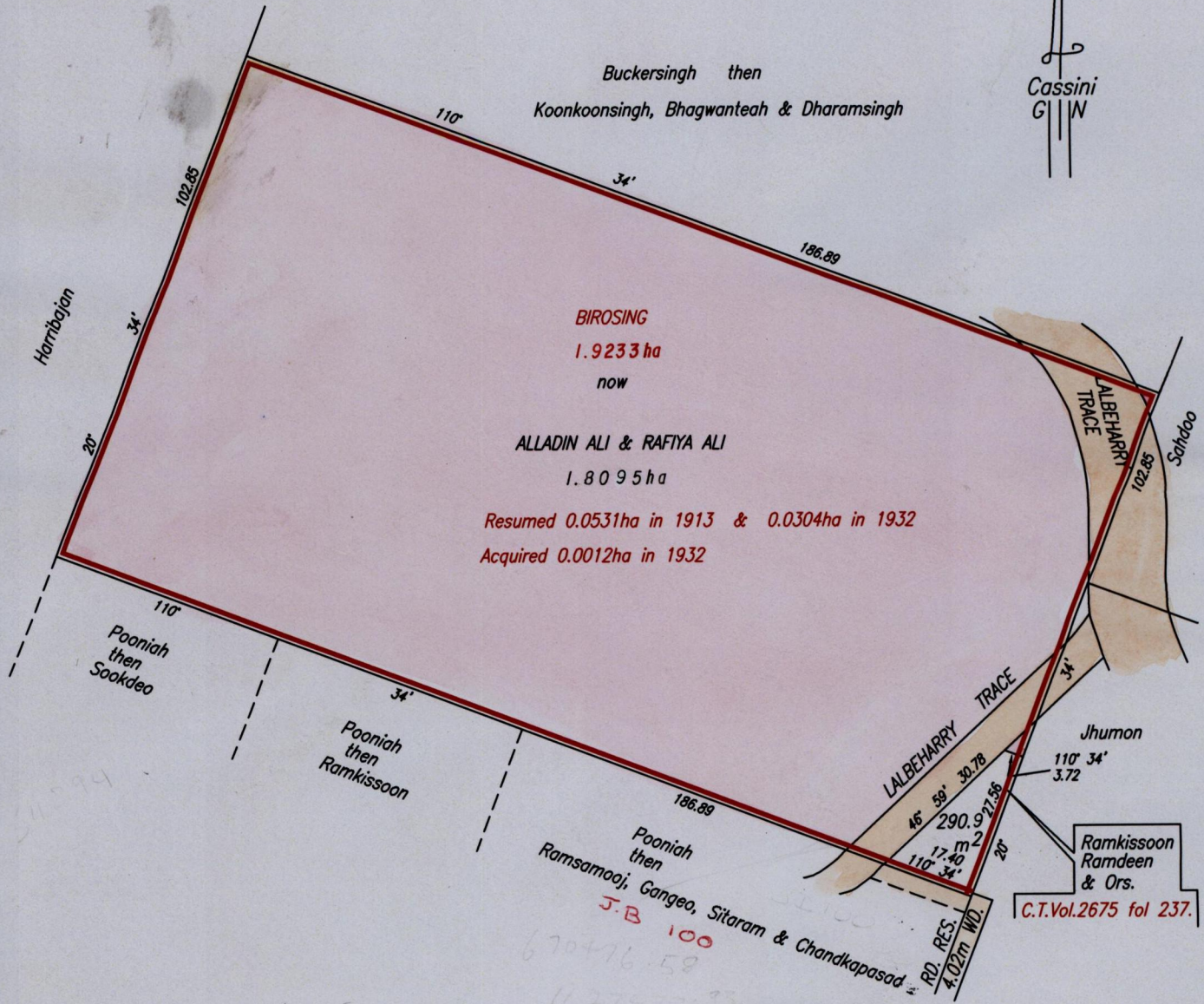
Vide Bk. 707 fol 86

Vide Bk. 710 fol 140

Vide Bk. 1128 fol 30

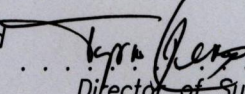
Plan AE 63

original



670 686 25  
1127 786 11  
670686.  
1127786.  
NGS 84.

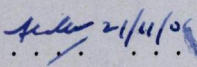
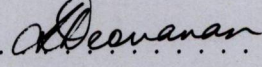


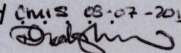
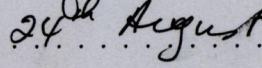
Approved   
Director of Surveys  
2006.11.30

Alladin & Rafiya Ali  
Alladin & Rafiya Ali

SCALE 1:1250  
Distances are in Metres

This is a true copy of a diagram of a Parcel of land in the Ward of Naparima Containing one point nine two three three hectares originally transferred to BIROSING, showing a portion coloured pink and containing one point eight zero nine five hectares being the remainder after two resumptions, one acquisition and one transfer of other portions of the land. In accordance with Regulation 25(1) of the Land Surveyors' Regulations 1998, I certify that this plan is correct.

Checked by  

Entered  05.07.2007 Trinidad & Tobago Land Surveyor  24th August 2006  
PATH = EV700 D:\Drawings06\AAli & RAli.dwg.