

1287

588

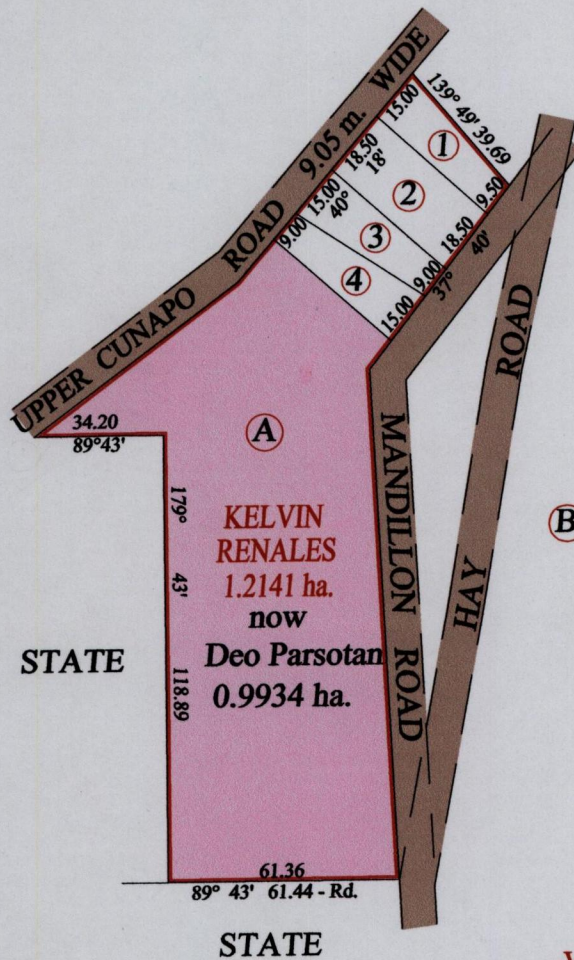
REMAINING PORTION

R.P.O. Vol. 23 Fol. 121  
C.T. Vol. 1993 Fol. 389  
Vol. 4973 Fol. 409

Ward of Turure  
County of St. Andrew  
Cadastral Sheet (E 2 B)  $\frac{25 F}{4/a}$

Process ID# 65641

GN  
CASSINI



Vide Bk. 1280 fol. 199

Local A  
705203.696  
1169229.864  
WCS 84.

- Lot ① John & Debbie Gobin 486.2 m<sup>2</sup>  
C.T. Vol. 4860 Fol. 419
- Lot ② Preston Ephrain 739.2 m<sup>2</sup>  
C.T. Vol. 4445 Fol. 209
- Lot ③ Chander & Routie Parrotan 487.3 m<sup>2</sup>  
C.T. Vol. 4860 Fol. 427
- Lot ④ Felix Balandin & Ors. 494.1 m<sup>2</sup>  
C.T. Vol. 4434 Fol. 487

Steve Ramlogan

Approved *[Signature]*  
Director of Surveys  
2007.12.11

SCALE : 1:2000  
Distances are in metres

This is a true copy of a diagram of one point two one four one hectares, originally granted to KELVIN RENALES, shewing a portion coloured pink and containing zero point nine nine three four hectares being the remainder after two (4) previous transfer of another portion of the land. In accordance with Regulation 25 (1) of the Land Surveyors' Regulations 1998, I certify that this plan is correct.

Checked by *[Signature]* Winston Ramcharan

Entered on CMIS 02-05-2012 Trinidad & Tobago Land Surveyor 16<sup>th</sup> May 2007