

1287

5

Cadastral Sheet D. 5.1. $\frac{24.F}{4/c}$ & $\frac{34C}{2/a}$

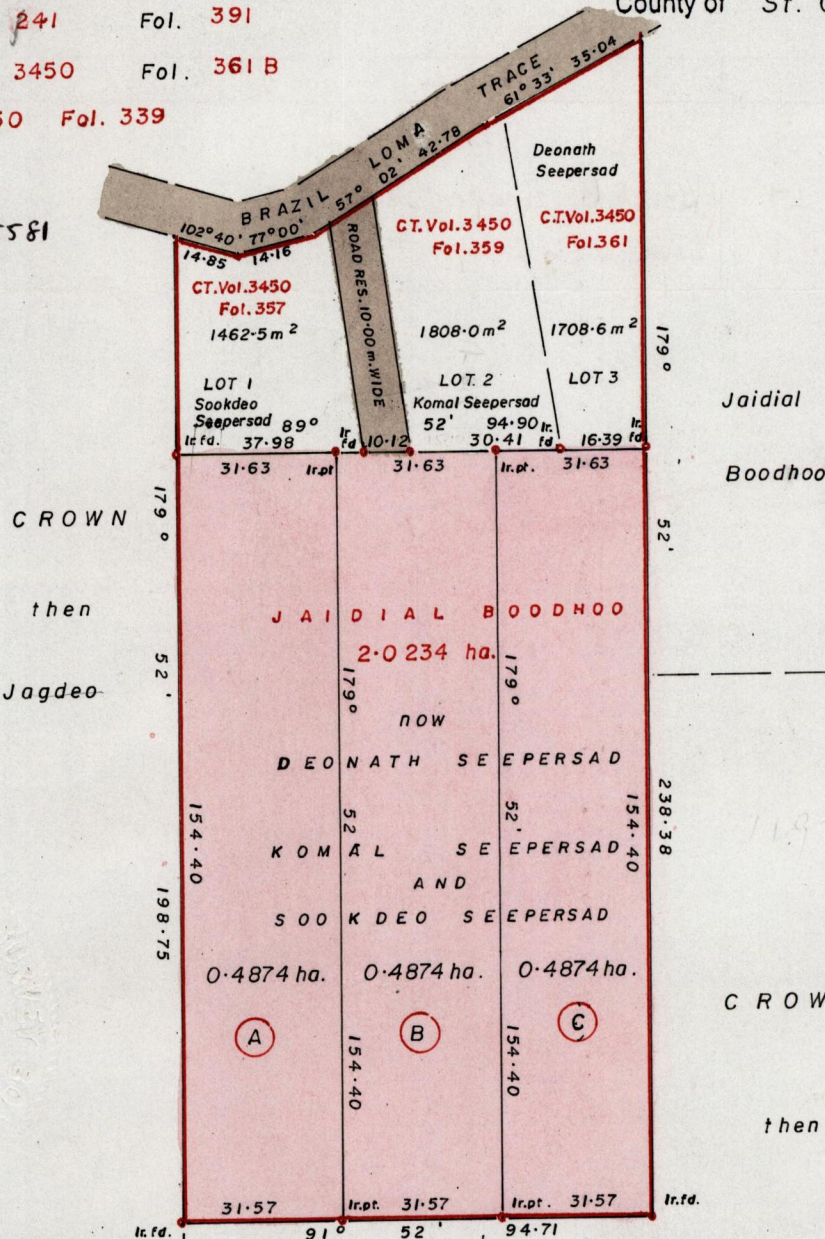
U.P.R.N. No.

Ward of San Rafael

Vol. 4234 Fol. 145
R.P.O. Vol. 241 Fol. 391
C.T. Vol. 3450 Fol. 361 B
Vol. 3450 Fol. 339

County of St. George

Process ID# 85581



NOTE:
 (i) Parcel A to be amalgamated with Lot 1
 (ii) Parcel B to be amalgamated with Lot 2
 (iii) Parcel C to be amalgamated with Lot 3

Approved
[Signature]
 Director of Surveys. 2000.11.28

CROWN
 then
 Ramharak

Rajputee c.f: L&S.Bk. 39 fol.233

SCALE : 1/1500

Distances are in metres

To obtain compass bearings add 8 minutes
 PLAN of 3 Parcel of land coloured pink in the Ward of San Rafael
 Containing together one point four six two two hectares.

Surveyed by me, with due authority in August 1999

In accordance with Rule 25 (1) of the Land Surveyors' Regulations 1998, I certify that this plan is correct.

Entered on 24 Feb 1/04
 Checked by M. V. S. 11.20
 ENTERED [Signature]

G.R. Jardine T.T.L.S.
 Land Surveyor, Trinidad & Tobago 13/6/00

2

Orig. Survey BK. 1197 fol. 165

No.	C.T. Volume	Name
A	Vol. 4234 fol. 145	Sookdeo Seepersad
B	Vol. 4234 fol. 147	Komal Seepersad
C	Vol. 4234 fol. 149	Deonath Seepersad

23 JUN 2000
Lands and
Surveys
Division

12-19 Vol 2/255