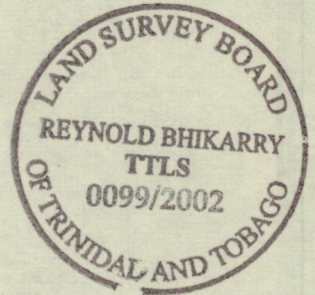
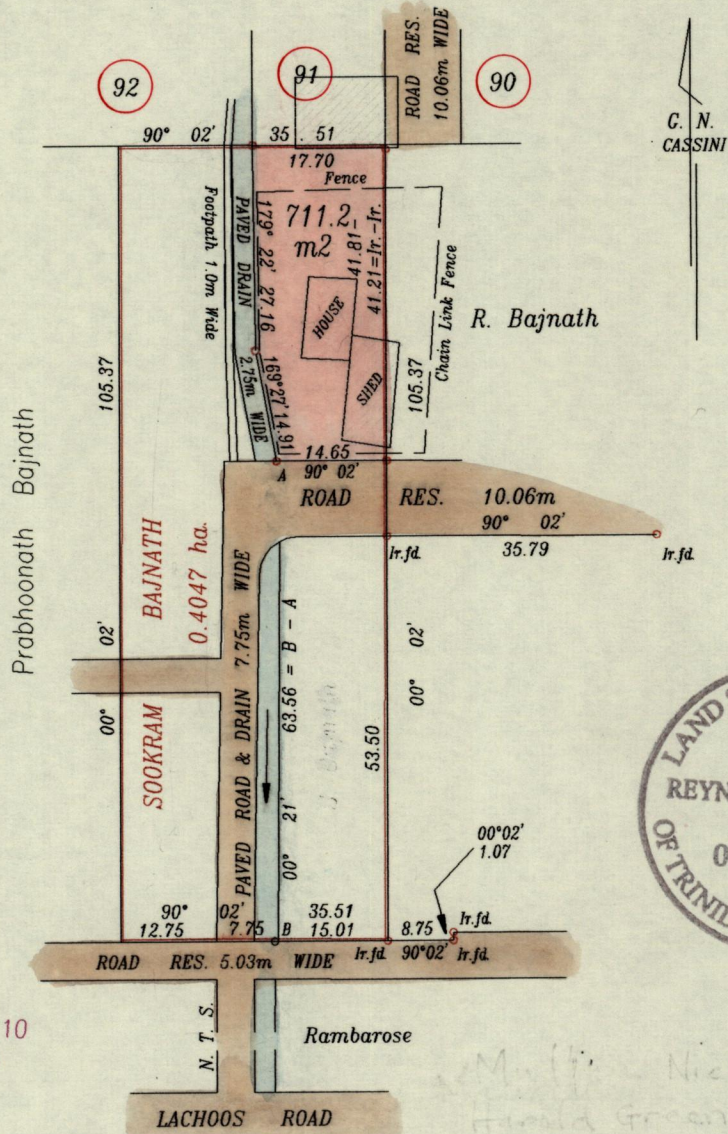


Process SD#65870
RPO. Vol. 77 Fol. 387
CT. Vol. 2359 Fol. 153
Vol. 4505 fol. 231

Cadastral Sheet G.13.J 63F
3/a
Ward of Siparia
County of St. Patrick



Vide Bk.1238 fol.110
Vide Bk.980 fol.44

Approved *[Signature]*
Director of Surveys
2003.9.19

(To Penal)

Mudline Dick & Hatold Green
SCALE 1 : 1000
Distances are in metres

○ Denotes Iron put, except otherwise stated.
Note : To obtain compass bearings subtract 2 minutes
PLAN of a Parcel of land coloured pink in the Ward of Siparia
Containing seven hundred and eleven point two square metres.
Surveyed by me, with due authority, in April 2002
In accordance with Reg. 25(1) of the Land Surveyors' Regulations 1998, I certify that this plan is correct.

Checked by *[Signature]* 08/09/03.
Entered *[Signature]* 2/04
LMIS 22-04-2013

Reynold Bhikarry TTLS.
14th November 2002