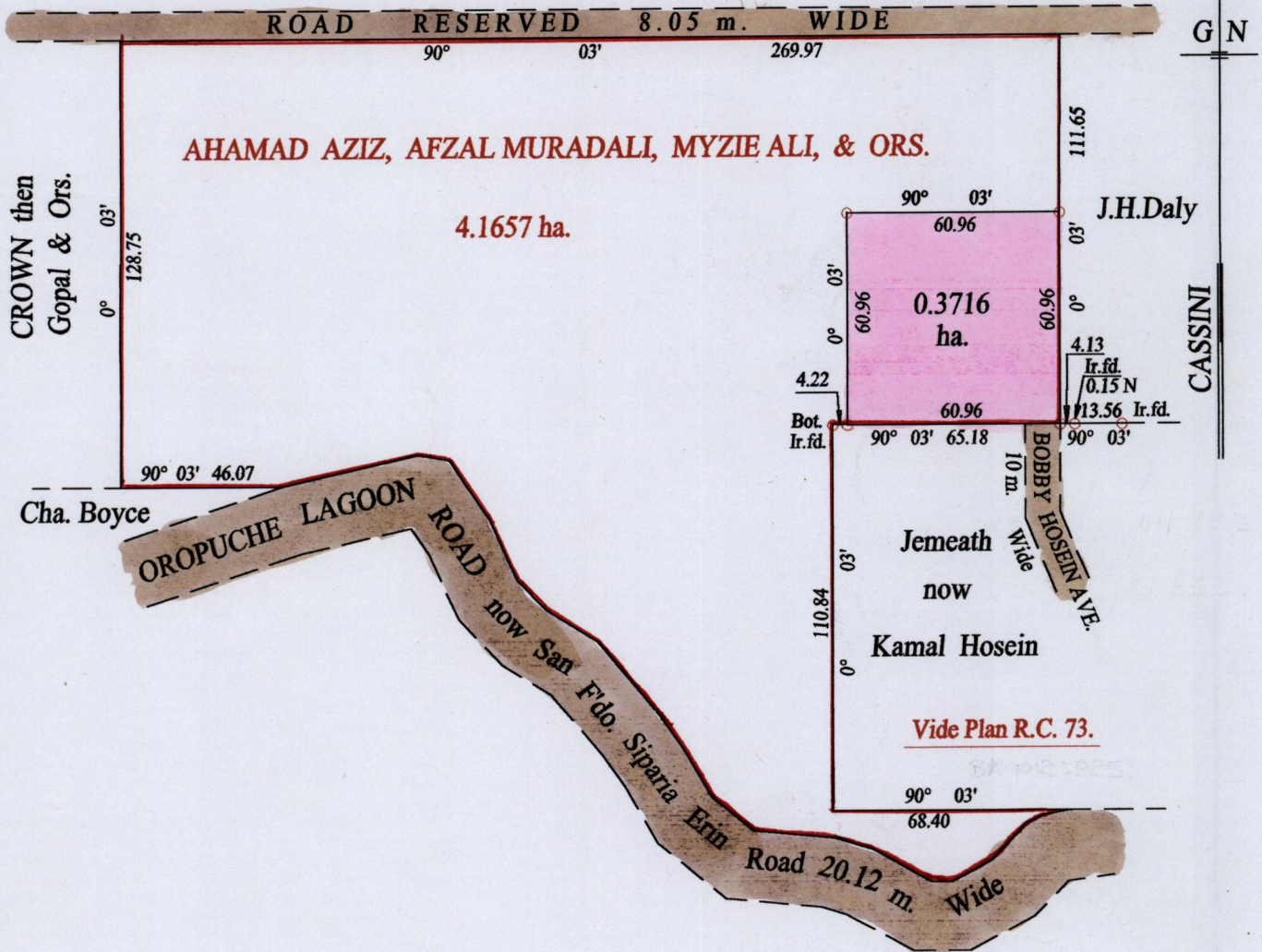


Process SD#65809



SEE 1012:225.

SEE JL 98

JL 290

Orig. Bk. 390 fol. 68 Ori

Rosa Farida & Abdul Hosein

Approved 1998/10/07

Director of Surveys

2003-8-15

o Denotes Iron put except stated otherwise.

SCALE : 1:2000

Note: Bearings are cassini grid based on solar observations

Distances are in metres

PLAN of a Parcel of land coloured pink in the Ward of Siparia

Containing zero point three seven one six hectare

Surveyed by me, with due authority, on the 7th. October 1997

In accordance with Regulation 25 (1) of the Land Surveyors' Regulation 1998,

I certify that this plan is correct.

Checked by 3m 21/07/03.

Entered on 63E/1101 Trinidad & Tobago Land Surveyor 30.10.2002

