

1287

221
221

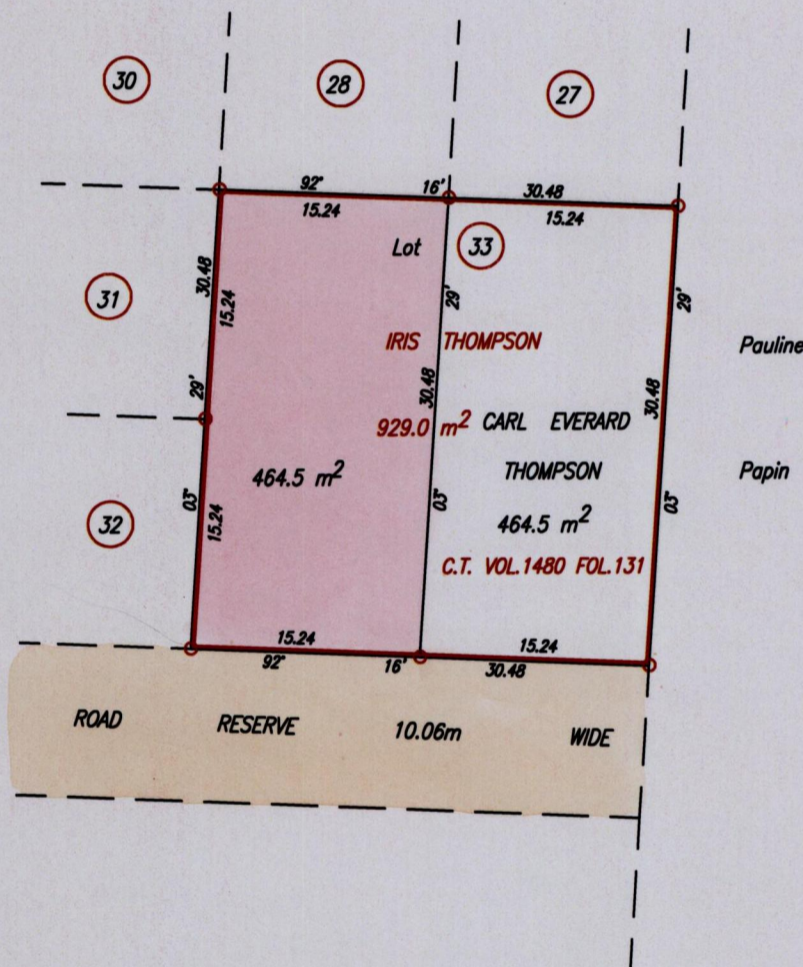
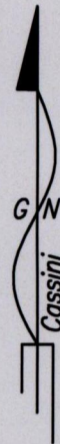
Process ID# 65929
R.P.O. Vol.
C.T. Vol. 1023
Vol. 5075 fol. 121

Fol.
Fol. 101

Cadastral Sheet B.17.K 23C
Ward of St. Anns 1/b
County of St. George

REMAINING PORTION

VIDE BK.936 FOL.134
BK.834 FOL.8



Frank Leslie Thompson

SCALE 1:500

Distances are in metres

Approved

[Signature]
Director of Surveys
2008.10.02

This is a true copy of a diagram of nine hundred and twenty nine point zero square metres, originally transferred to Iris Thompson showing a portion coloured pink containing four hundred and sixty four point five square metres being the remainder after one transfer, of another portion of the land. In accordance with Regulation 25 (1) of the Land Surveyors' Regulations 1998, I certify that this plan is correct.

Checked by *[Signature]* 26/9/08

[Signature]

Entered on *[Signature]*

Trinidad & Tobago Land Surveyor. 20th August 2008.
ADA004 E./DRAWINGS/FRANK THOMPSON REM.PORITION DWG

