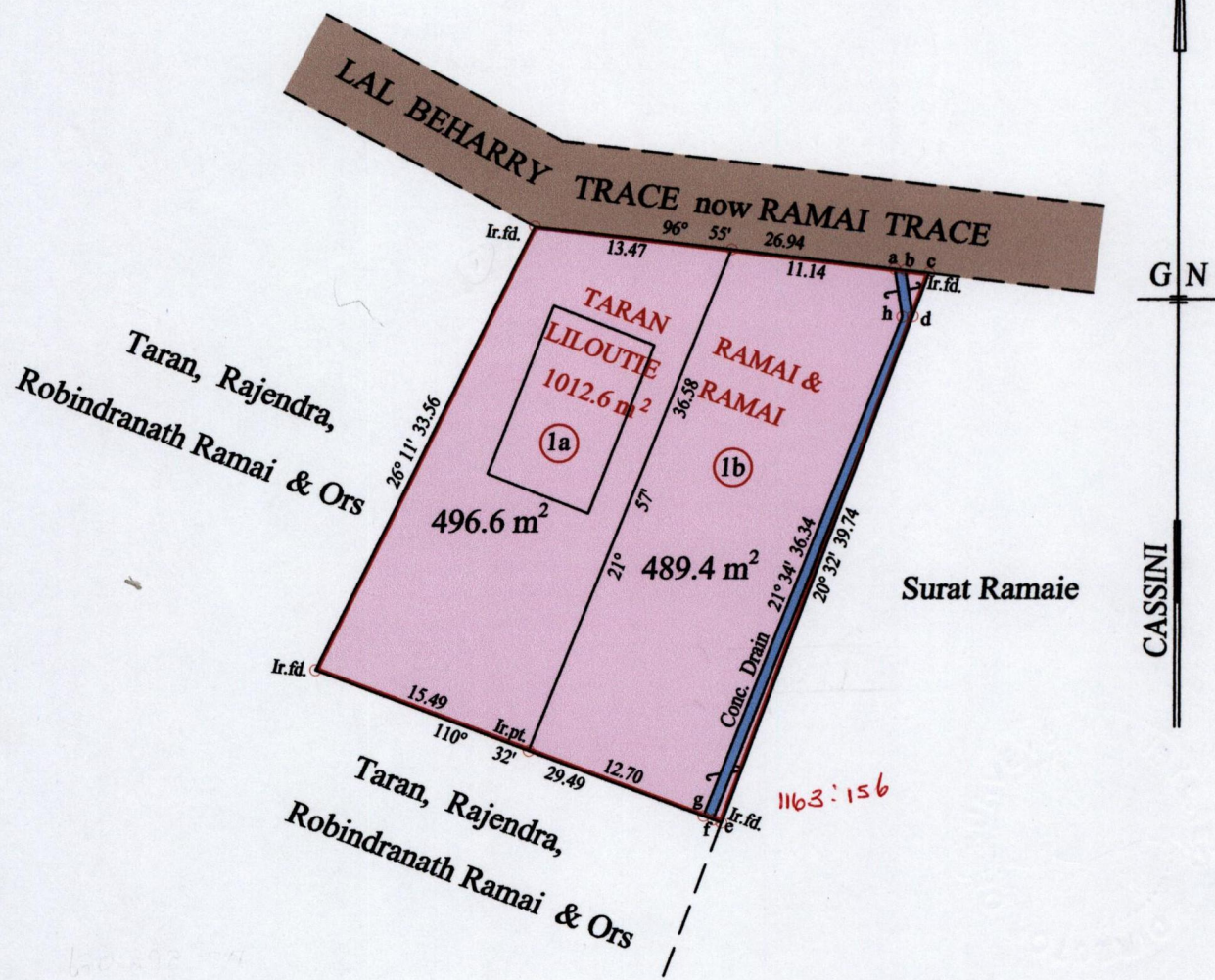


1237

220

Process #DA#65926
R.P.O. Vol. 14 Fol. 449
C.T. Vol. 3896 Fol. 205
Vol. 5070 fol. 77

Ward of Naparima
County of Victoria
Cadastral Sheet (G.13.B)
63.F.
1/a



o- 670818
1127775
WGS 84

a - b	96° 55'	0.72
b - c	96° 55'	1.61
c - d	200° 32'	3.13
d - e	200° 32'	36.61
e - f	290° 32'	0.60
f - g	290° 32'	0.70
f - d	21° 28'	36.61
a - h	170° 58'	3.29
b - d	170° 54'	3.16



Approved *[Signature]*
Director of Surveys
2008.5.2

Vide Bk. 1238 fol. 30.

o Denotes Iron put except stated otherwise.
SCALE : 1:500
Note: Bearings are cassini grid based on solar observations Distances are in metres
PLAN of 2 Parcels of land coloured pink in the Ward of Naparima
Containing together nine hundred and eighty six point zero square metres
Surveyed by me, with due authority, in August 2006
In accordance with Regulation 25 (1) of the Land Surveyors' Regulations 1998,
I certify that this plan is correct.

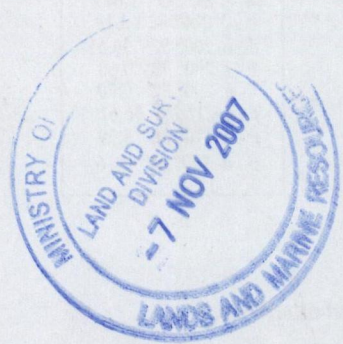
Checked by *[Signature]* 30/4/08
Entered on *[Signature]* 6th November 2007
Trinidad & Tobago Land Surveyor

OSS

5822

1a - CT. Vol. 5181 Fol. A03 RUSSELL SHIVA RAMAI

1b - Vol. 5070 fol. 81 Rajin & Linda Doodnath



now 1281/220
14/1/58