

1287

218

Vol. 5015 Fol. 339

R.P.O. Vol. 70 Fol. 93

Ward of La Brea

C.T. Vol. 1673 Fol. 283

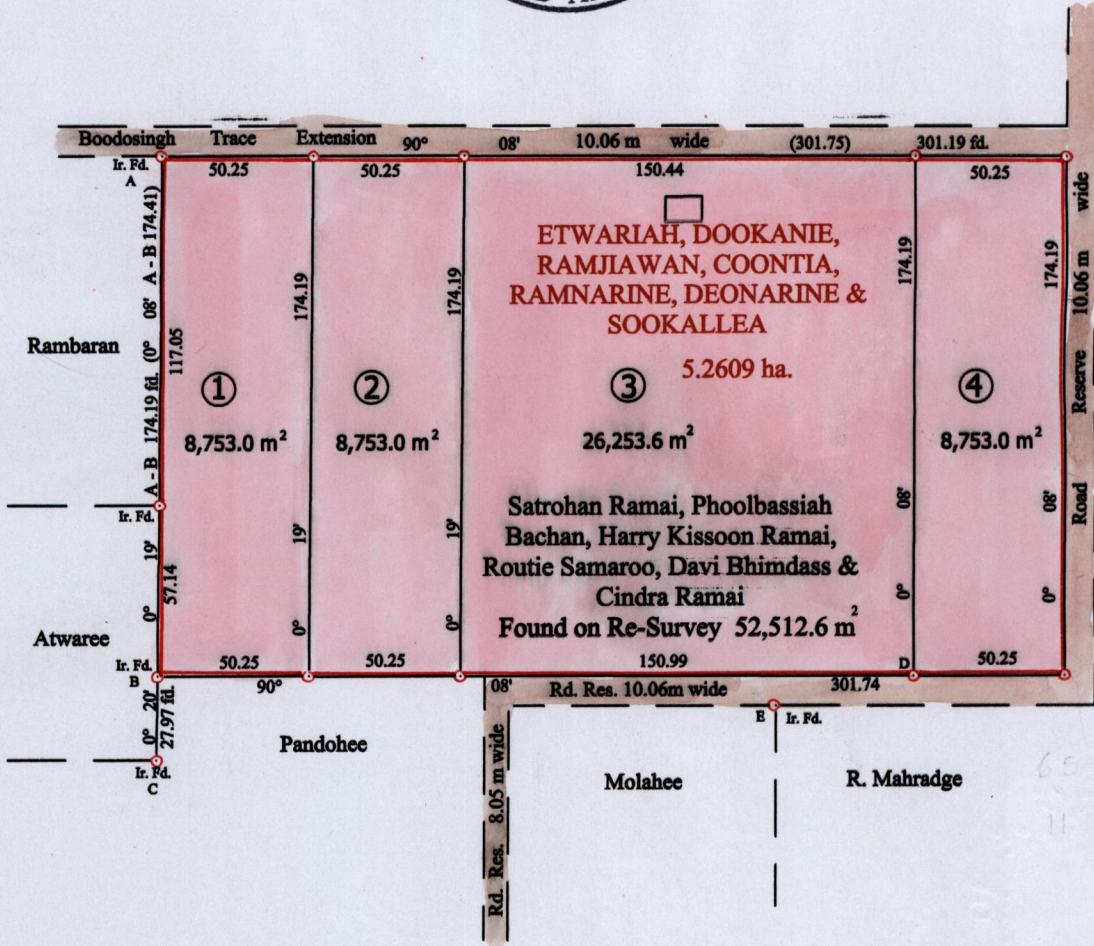
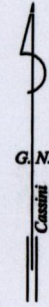
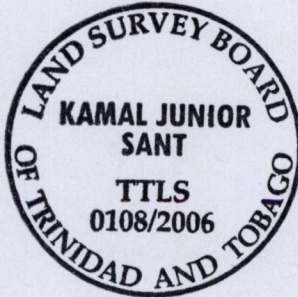
County of St Patrick

Process JD#65919

Cadastral Sheet 62C (G.6.M)  
3/c

U.P.R.N. No.:.....

References:  
Bk. 459 Fol. 79  
Bk. 459 Fol. 123  
Bk. 459 Fol. 68



653 551  
11289 31  
493 84

Approved *[Signature]*  
Director of Surveys  
2006.5.16

E-D 77° 43' 46.59

○ Denotes iron put unless otherwise stated  
Distances are in metres

Scale 1 : 2,500

To obtain Compass Bearings subtract eight (-8) minutes  
PLAN of four parcels of land coloured pink in the Ward of La Brea.  
Containing together Fifty Two thousand Five hundred and Twelve point Six sq.m.  
Surveyed by me, with due authority, in September 2005, for Ramai and Ors.  
In accordance with Regulation 25(1) of the Land Surveyors' Regulations 1998,  
I certify that this plan is correct.

Checked by *[Signature]* 15/5/06

*[Signature]*

Entered by *[Signature]* 01-07-2006

Trinidad & Tobago Land Surveyor *[Signature]* 14th February 2006

Original Bk 459:79

- 1 - Vol. 5015 fol. 363 Rawtie Samaroo, Devi Bhimdass & Cindra Ramai & Ors.
- 2 - Vol. 5015 fol. 359 " " "
- 3 - Vol. 5015 fol. 357 " " "
- 4 - Vol. 5015 fol. 361 Devi Bhimdass



1358/283