

1287

217

Cadastral Sheet E.6.M. & N. 35E  
1/c  
Ward of Tamana  
County of St. Andrew

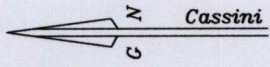
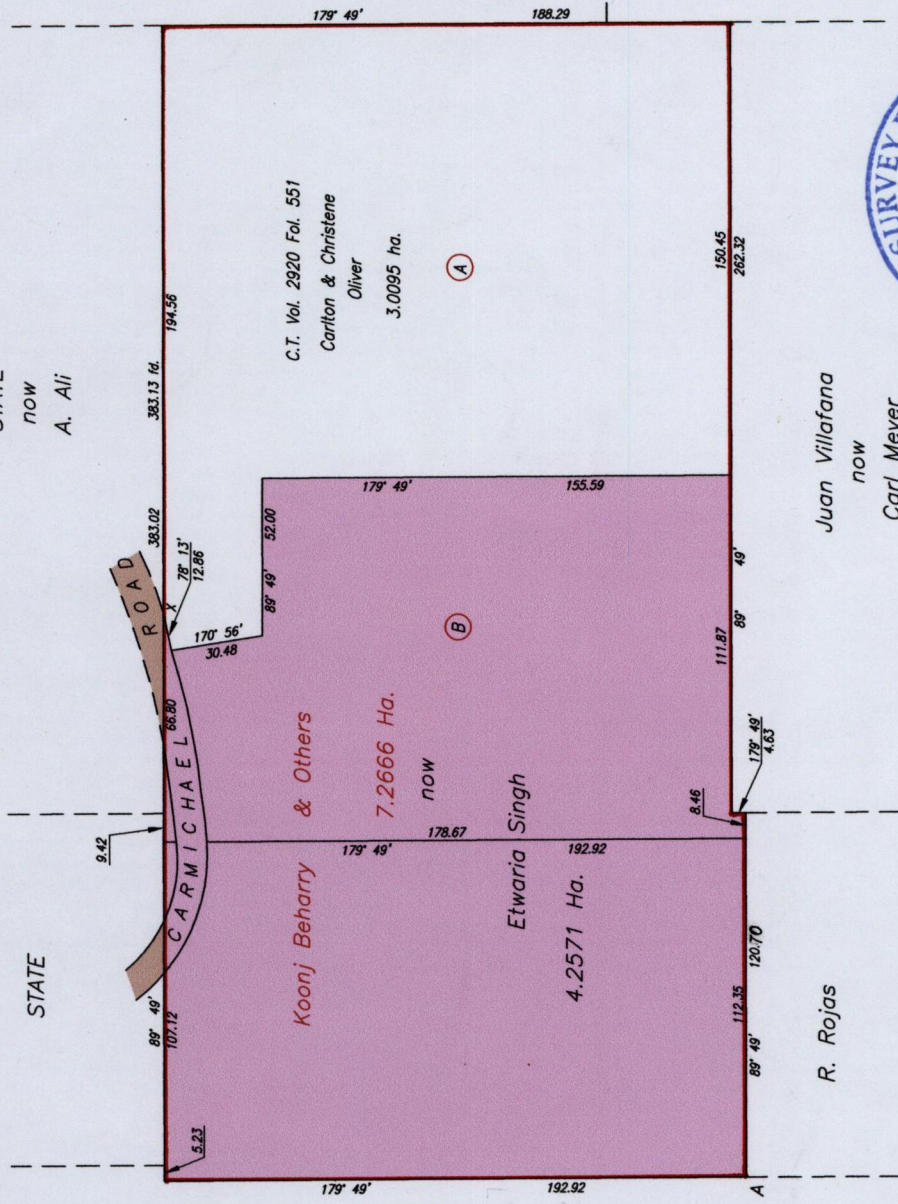
Remaining Portion Plan

Vol. 5092 fol. 275

R.P.O Vol. 29 Fol. 165

C.T. Vol. 1476 Fol. 403

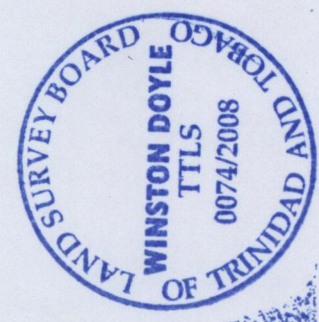
Process ID# 65915



U.T.M.	
A	N. 1159 470
	E. 697 456
Nap. Datum ± 5.0 M	

Bk. 8:200
Bk. 1141:167

SCALE 1/2500  
Distances are in metres



Etwaria Singh

Approved.....  
Director & Surveyor  
2008.11.25

Bearings are Cassini Grid based on Solar Observations  
This is a true copy of a diagram of seven point two six six hectares originally transferred to Koonj Beharry & Others showing a portion coloured pink and containing four point two five seven one hectares being the remainder after (1) one previous transfers and of other portions of the land. In accordance with Regulation 25 (1) of the Land Surveyors' Regulations 1998, I certify that this plan is correct.

*Winston Doyle*  
Trinidad & Tobago Land Surveyor.....  
6<sup>th</sup> November 2008

Checked By: H.R. - 20/11/08 Entered on: J. Ram 25-06-13

Trinidad & Tobago Land Surveyor.....  
6<sup>th</sup> November 2008