

Process ID 165912

Vol. 5077 fol. 21

Remaining Portion

R.P.O. Vol. 220 Fol. 553

C.T. Vol. Fol.

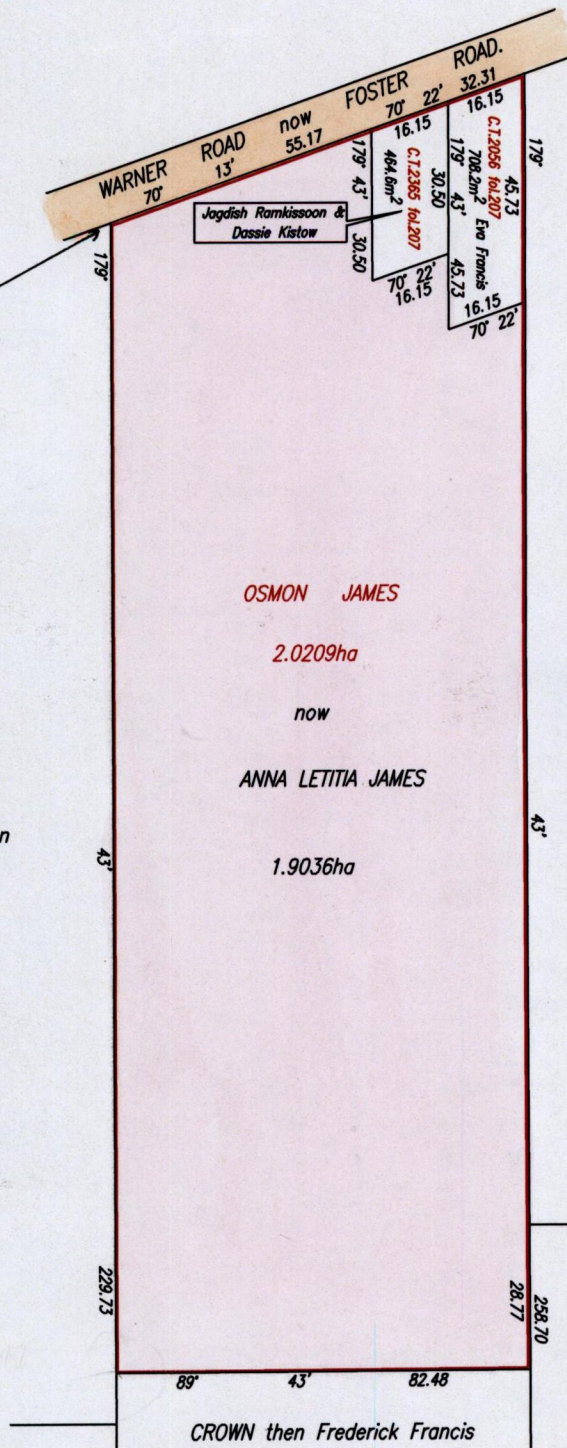
Cadastral Sheet C.22.J. 25C & 25F
4/c 2/a

Ward of Turure

County of St. Andrew

Vide Bk. 193 fol. 245
" " 980 " 106
" " 991 " 138
" " 1196 " 169

N 1172450
E 705602



Cassini
G I N

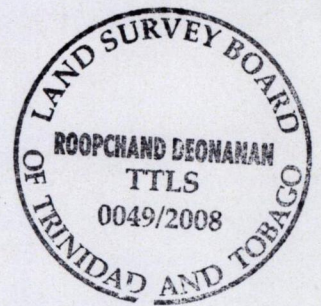
CROWN
then
Hassaran

Pet'd. for
by
Joseph James

Note :

Coordinates obtained by
Digital topo data
For identification only

705767
1172632
WGS84



CROWN
then
Cornelius Sheppard

CROWN then Frederick Francis

Anna Letitia James

Approved

[Signature]
Director of Surveys
2008-11-11

SCALE 1:1500

Distances are in metres

This is a true diagram of two point zero two zero nine hectares originally granted to Osmon James showing a portion coloured pink and containing one point nine zero three six hectares being the remainder after two previous transfers of other portions of the land. In accordance with Regulation 25 (1) of the Land Surveyors' Regulations 1998, I certify that this plan is correct.

Checked by

[Signature]
27/11/08

[Signature]

Entered on

013 03-06-2013

Trinidad & Tobago Land Surveyor.

24th May

2008.