

Vol. 5075 fol. 307

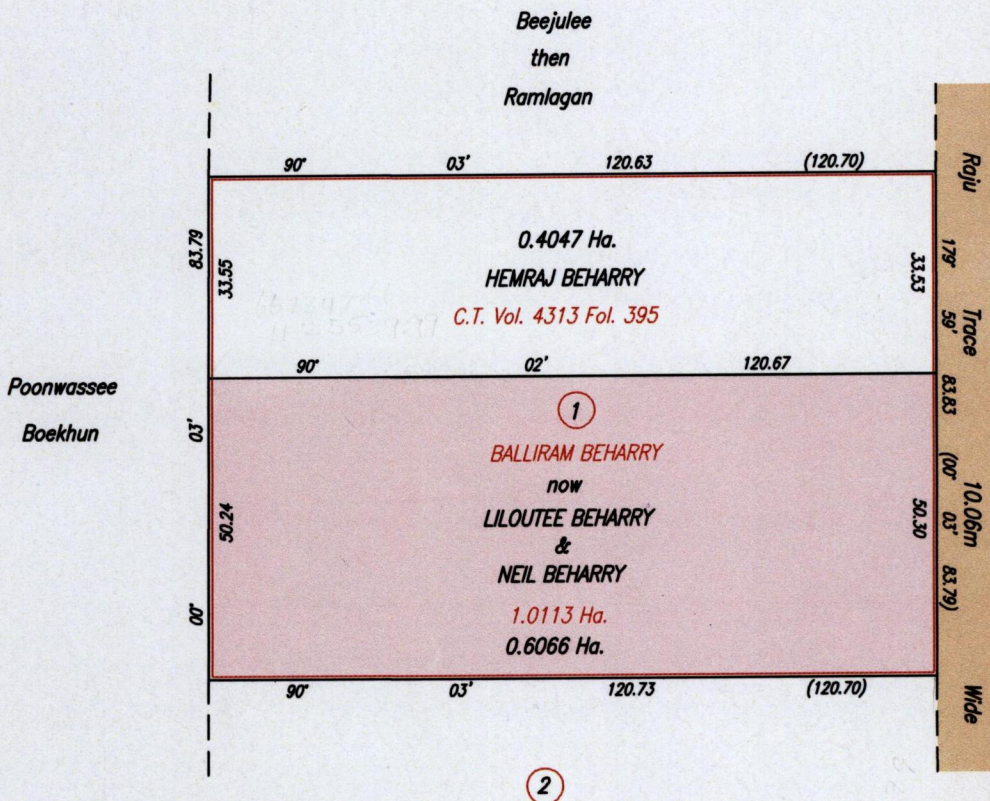
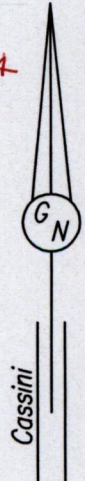
REMAINING PORTION

R.P.O. Vol. 122 Fol. 503
C.T. Vol. 2939 Fol. 535

63E
Cadastral Sheet G.13.E. 2/d
Ward of Siparia
County of St. Patrick
Bk. 1249 Fol. 137

Process SD #65908

Original Bk 1256: 134



667647.67
1125725.41
498 84

See Bk 1141: 219
See Bk 1128: 107

Liloutee & Neil Beharry

SCALE 1/1250
Distances are in metres

Approved

[Signature]
Director of Surveys
2007-6-23

Bearings are Cassini Grid based on Solar Observations

This is a true copy of a diagram of one point zero one one three hectares originally transferred to Balliram Beharry, showing a portion coloured pink and containing zero point six zero six six hectare being the remainder after one previous transfer of another portion of the land.

In accordance with Regulation 25 (1) of the Land Surveyors' Regulations 1998,

I certify that this plan is correct.

Entered on

Checked by *[Signature]* 9/12
Trinidad & Tobago Land Surveyor 2007

ENTERED EMIS: 05-07-2013

