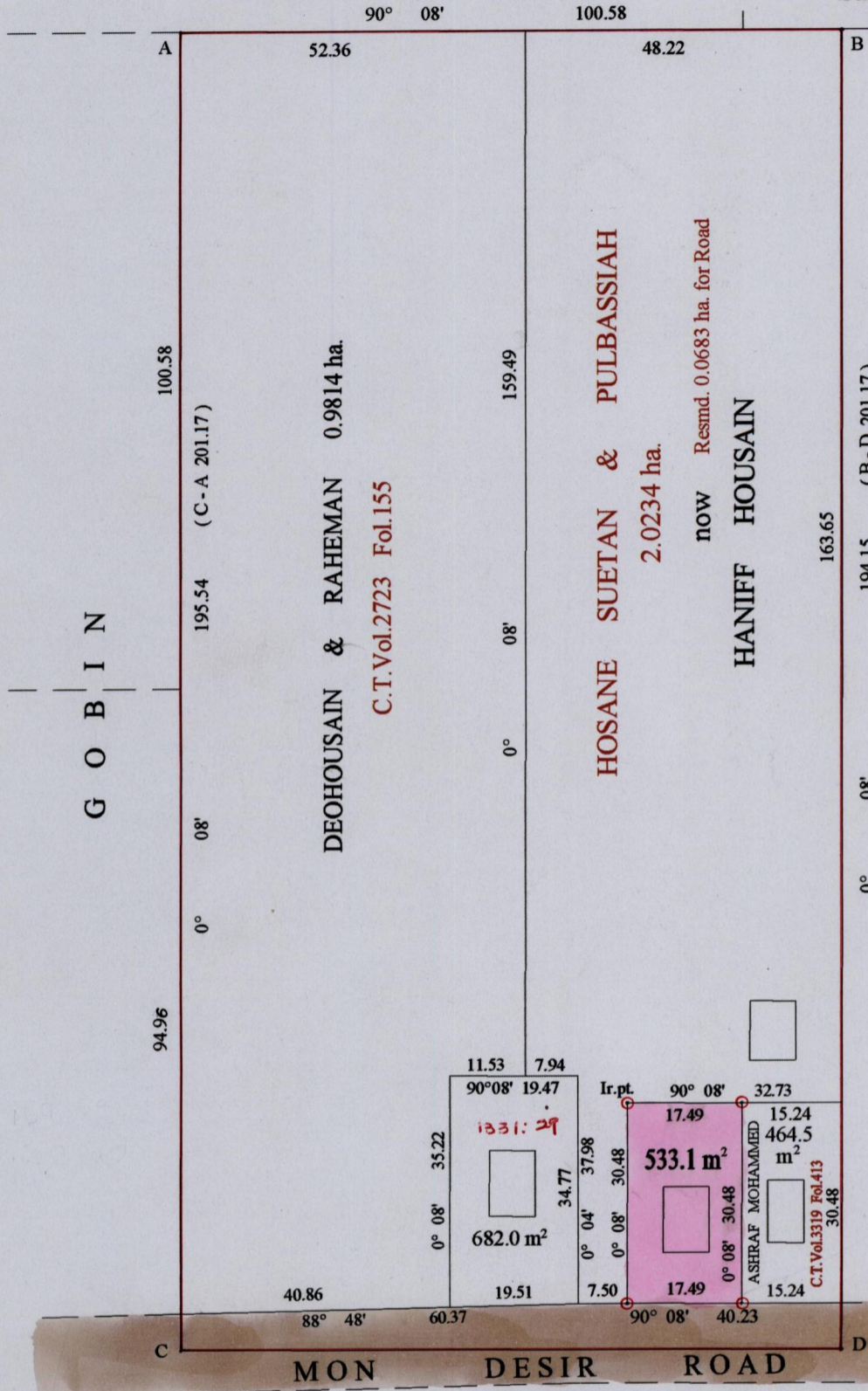


1237

134

Process 25741
R.P.O. Vol. 18 Fol. 507
C.T. Vol. 619 Fol. 567
Vol. 4946 Fol. 393

Ward of Siparia
County of St. Patrick
Cadastral Sheet (G.G.N 80) 62C
CROWN then Gopee
Sahadeoh 4/c



Original Bk 1329:209

Sheriff, Sumitra,
Shane of Sheriffa
Hosain
1129356:201

Approved *[Signature]*
Director of Surveys
2005.6.17

Sheriff, Sumitra Shane & Sheriffa Hosain
Vide Bk.1179 Fol.166

○ Denotes Iron found unless otherwise stated

SCALE : 1:1000

Note: Bearings are cassini grid based on solar observations

Distances are in metres

PLAN of a Parcel of land coloured pink in the Ward of Siparia
Containing five hundred and thirty three point one square metres
Surveyed by me, with due authority, in September 1997.

In accordance with Regulation 25 (1) of the Land Surveyors' Regulations 1998,
I certify that this plan is correct.

Checked by *[Signature]* M.M. 13/6/05

Entered on *[Signature]* MS 0507-2003 Trinidad & Tobago Land Surveyor 12:02 2005

