

REMAINING PORTION

183 1287 177

Process Jdt 65702

R.P.O. Vol. 17 Fol. 398

C.T. Vol. 1342 Fol. 465

U.P.R.N. No.

Vol. 4951

Fol. 217

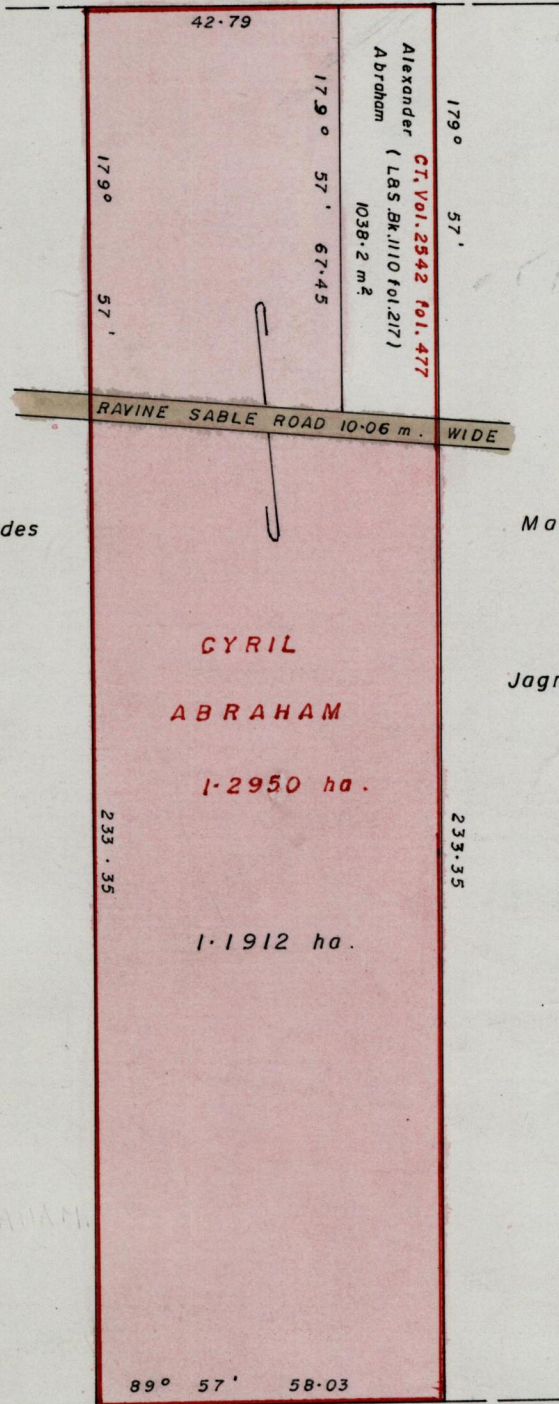
Betancourt

Ward of Chaguanas

County of Caroni

Cadastral Sheet D.B.H. 34A 4/d.

89° 57' 58.03



Fitzgerald Blades

and

Mahadeah

Mannick

then

Jagnath Maharaj

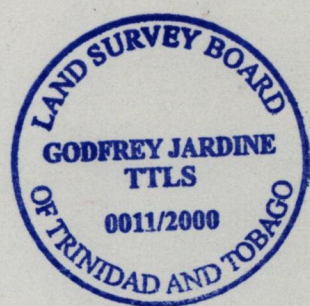
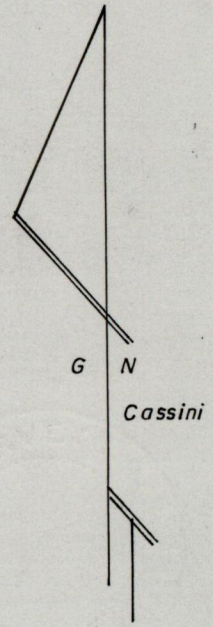
CYRIL

ABRAHAM

1.2950 ha.

1.1912 ha.

RAYINE SABLE ROAD 10.06 m. WIDE



E. 679456 N. 1161687

Dookhee

(Vide: LAS. Bk. 1110 fol. 211)

then

Kowsil & Moon

Joseph Cyril Abraham

Approved by

*[Signature]*

27 Director of Surveys 2000.9.18

Orig. Sur Bk 222  
BK 712 Fol. 127  
1110.211  
fol 119

SCALE:- 1/1250

Distances are in metres

Note: To obtain compass bearings add/ subtract 3 minutes

This is a true copy of a diagram of one point two nine five zero hectares originally granted to Cyril Abraham sheving a portion coloured pink and containing one point one nine one two hectares being the remainder after ONE (1) previous transfer of another portion of land

In accordance with Rule 25 (1) of the Land Surveyors' Regulations 1998, I certify that this plan is correct.

Checked by... 21.09.14...

Entered on...

*[Signature]* T.T.L.S.  
Trinidad & Tobago Land Surveyor 31/5/00