

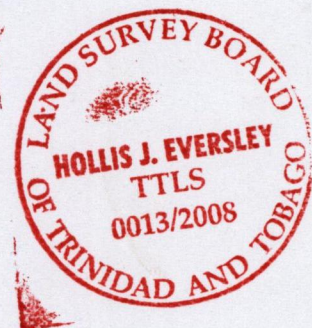
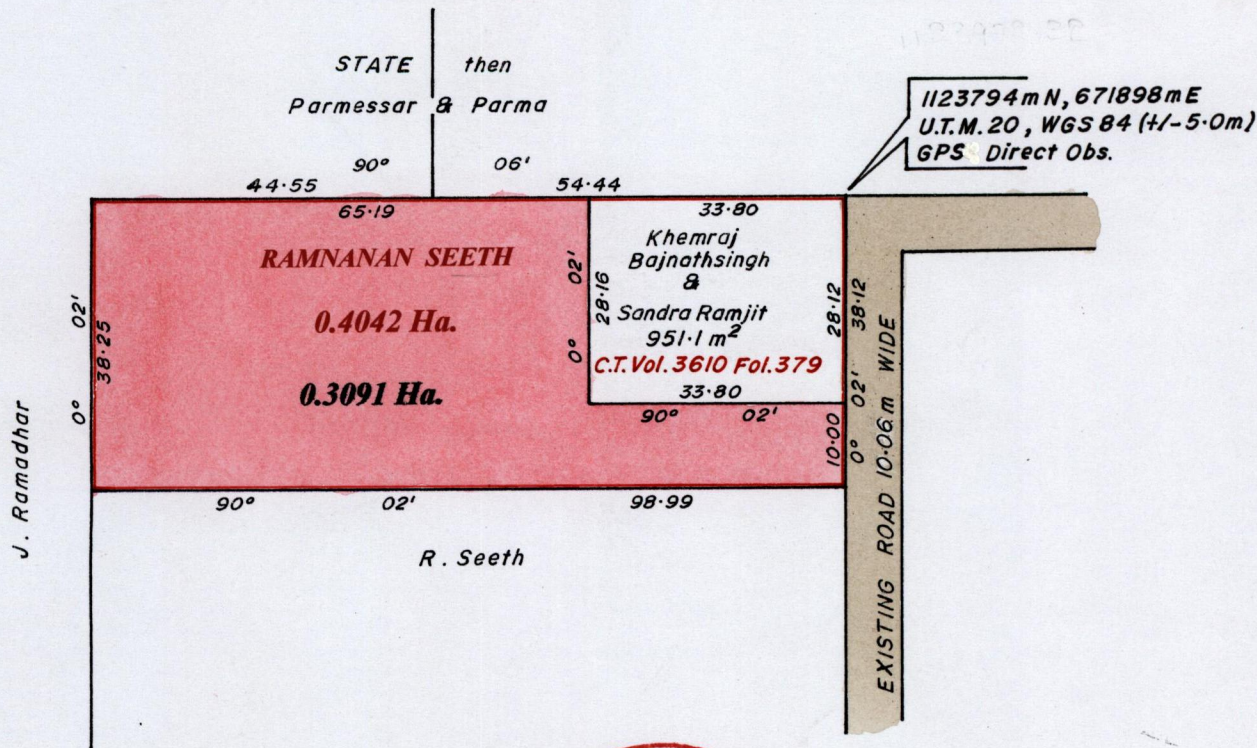
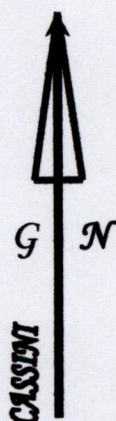
1237

1688

Process 22# 65659
R.P.O Vol. 212 Fol. 389
C.T. Vol. 2920 Fol. 577
Vol 5043 Fol 3A9

REMAINING PORTION

Ward of Siparia.
County of St. Patrick.
Cadastral Sheet G.13.K. 63F
4/a



672067.45 E
1123972.32 N
WGS 84.

Ramnaran Seeth

Bk. 1141 : 176.
1211 : 156
SCALE 1 : 1000.

Distances are in METRES

Approved.....
Director of Surveys. 2008.5.27

This is a true copy of a diagram of zero point four zero four two hectare,
Originally transferred to RAMNANAN SEETH showing a portion,
Coloured pink and containing zero point three zero nine one hectare ,being
the remainder, after one previous transfer of another portion of the land.
In accordance with Reg. 25(1) of the Land Surveyors' Regulations 1998,
I certify that this plan is correct.

Checked by MAM 8/5/08
Entered CMIS 21-05-2013

Trinidad and Tobago Land Surveyor..... 1st July 2008.

Original Survey BK. 1141 fol. 176

Vol. 5043 Fol. 349 Ramnanan Seeth.



1418/12