

Process ID# 65634

1287

162

R.P.O. Vol. 36 Fol. 65

Cadastral Sheet 35E, G.6.I
1/a

C.T. Vol. 4556 Fol. 443

Ward of Tamana

U.P.R.N. No.

County of St. Andrew

Vol 4975 Fol 195

Road Traverse

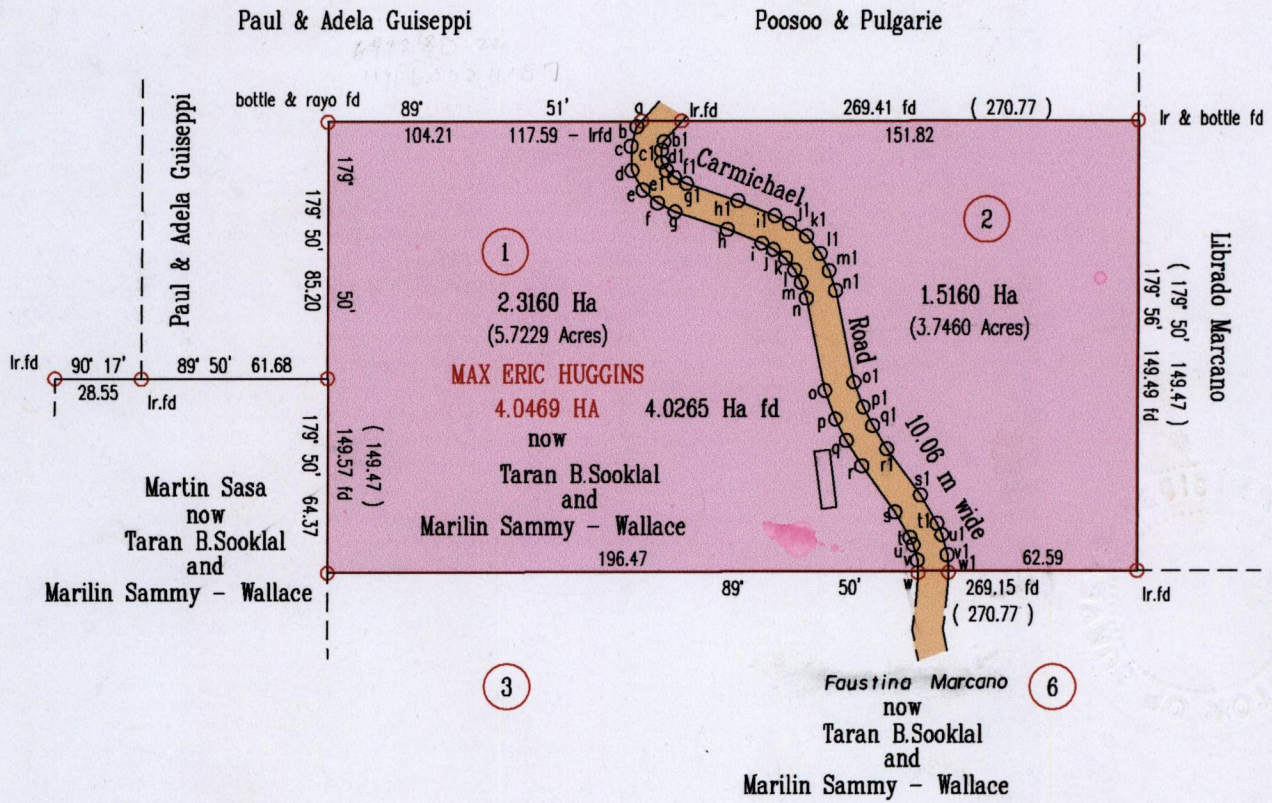
Line	Bearing	Dist.
a - b	221° 06'	2.55
b - c	196° 04'	6.73
c - d	177° 56'	8.04
d - e	150° 20'	7.40
e - f	130° 56'	6.55
f - g	116° 28'	6.47
g - h	108° 23'	18.42
h - i	111° 53'	12.40
i - j	118° 31'	4.39
j - k	125° 18'	4.99
k - l	142° 01'	5.01
l - m	152° 18'	4.70
m - n	161° 36'	5.53
n - o	168° 25'	31.37
o - p	159° 30'	10.19
p - q	153° 03'	7.94
q - r	148° 20'	9.88
r - s	143° 37'	18.79
s - t	149° 12'	9.81
t - u	155° 37'	2.68
u - v	164° 54'	5.21
v - w	174° 49'	3.69

Line	Bearing	Dist.
lrfd - b1	221° 06'	9.13
b1 - c1	196° 04'	2.90
c1 - d1	177° 56'	3.97
d1 - e1	150° 20'	3.21
e1 - f1	130° 56'	3.55
f1 - g1	116° 28'	4.48
g1 - h1	108° 23'	18.01
h1 - i1	111° 53'	13.29
i1 - j1	118° 31'	5.57
j1 - k1	125° 18'	7.06
k1 - l1	142° 01'	7.39
l1 - m1	152° 18'	6.43
m1 - n1	161° 36'	6.95
n1 - o1	168° 25'	31.19
o1 - p1	159° 30'	8.84
p1 - q1	153° 03'	6.95
q1 - r1	148° 20'	9.06
r1 - s1	143° 37'	18.87
s1 - t1	149° 12'	10.86
t1 - u1	155° 37'	4.06
u1 - v1	164° 54'	6.90
v1 - w1	174° 49'	5.44



G.N

Cassini



Vide
Bk. 7:48
Bk. 549:204
Bk. 550:268

E. 697268
N. 1160802

Approved

Lyra Deng
Director of Surveys
2007.10.09

○ Denotes Traverse Point

Bearings are Cassini Grid based on Solar Obs.

SCALE 1:2500

○ Denotes Iron Put unless otherwise stated

Distances are in Metres

Plan of 2 Parcels of land coloured pink in the Ward of Tamana
Containing together three point eight three two zero hectares
Surveyed by me, with due authority, in April 2007

In accordance with Regulation 25(1) of the Land Surveyors' Regulations 1998, I certify that this plan is correct.

Checked by *Mela 14/1/07*

Indar Ragoo

Entered on *[Signature]*

Trinidad & Tobago Land Surveyor *25th / July 2007*

1. Vol 4975 Fol 201 Jemma Ramcallian

2. Vol. 5018 Fol. 137



444/20