

REMAINING PORTION PLAN

Process JD# 65621

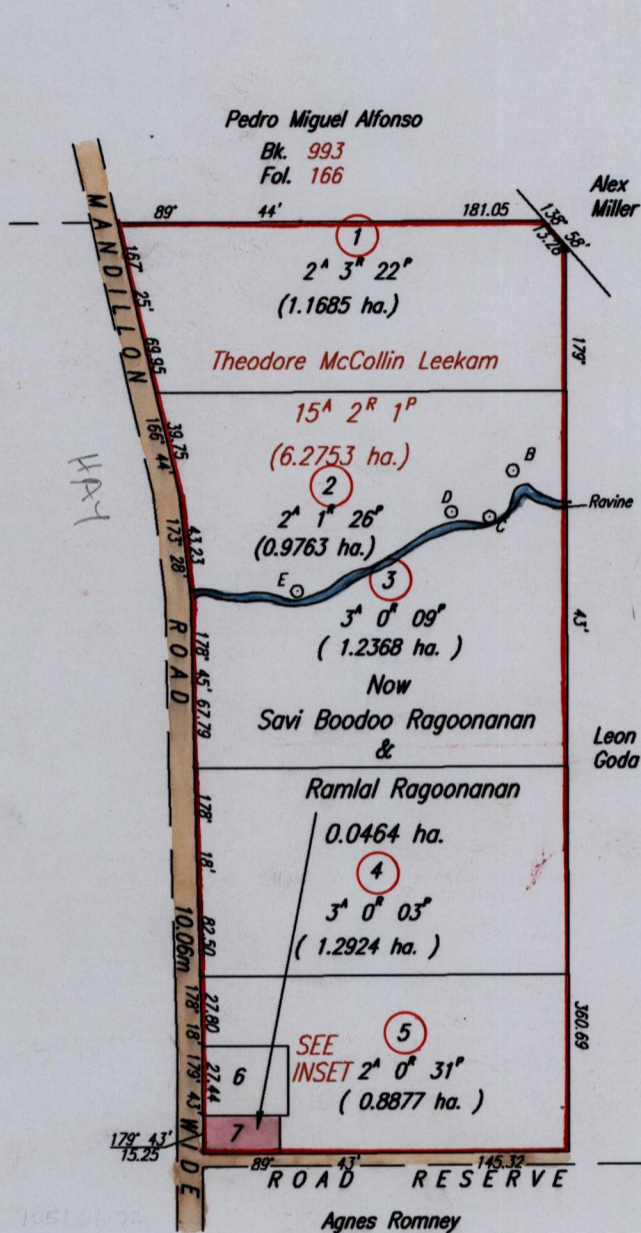
R.P.O. Vol. 2 Fol. 254

C.T. Vol. 495 Fol. 207

Vol. 4890 Pol. 393

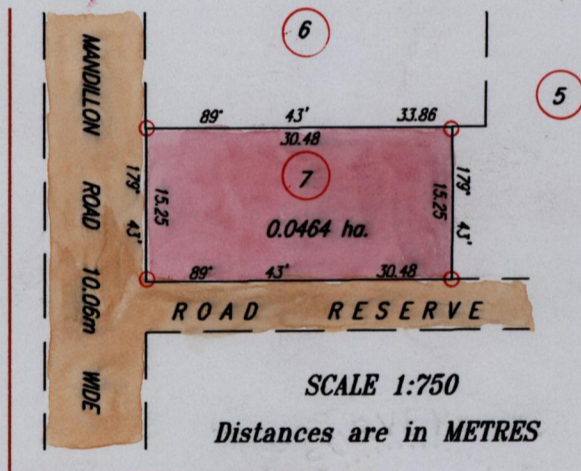
Cadastral Sheet E.2.B. 25F  
Ward of Turure 3/b & 4/a  
County of St. Andrew

BK 997 Fol. 144



LOT	C.T. Vol.	Fol.	Name on C.T.
1	2490	263	Hillary Calliste
2	2315	417	Leola Eligon
3	2424	613	Neal Kennedy & Evelyn F. Kennedy
4	2681	311	Abraham Yorke & Soondardaye Yorke
5	2315	269	Veronica Ursula Phillips
6	2424	617	Emanuel Bouville & Stella Bouville

INSET

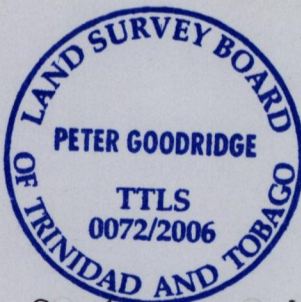


SCALE 1:750

Distances are in METRES

Lot	Area
6	10,000 S.F. - 0.0929 ha.

Ref: Vol. 2315  
Fol. 263



Approved .....

Director of Surveys

2006-4-13

SCALE 1:3000

Distances are in METRES

This is a true copy of a diagram of six point two seven five three hectares originally transferred to Theodore McCollin Leekam, showing a portion coloured pink and containing zero point zero four six four hectares being the remainder after six previous transfers of another portion of the land. In accordance with Regulation 25 (1) of The Land Surveyors' Regulations 1998, I certify that this plan is correct.

Checked by .....

Entered on C.M.S. 28-06-2003

Trinidad & Tobago Land Surveyor  
C:\LESS 2006\CHARLES HUDSON\041

30th January 2006  
FILE NO: 0026