

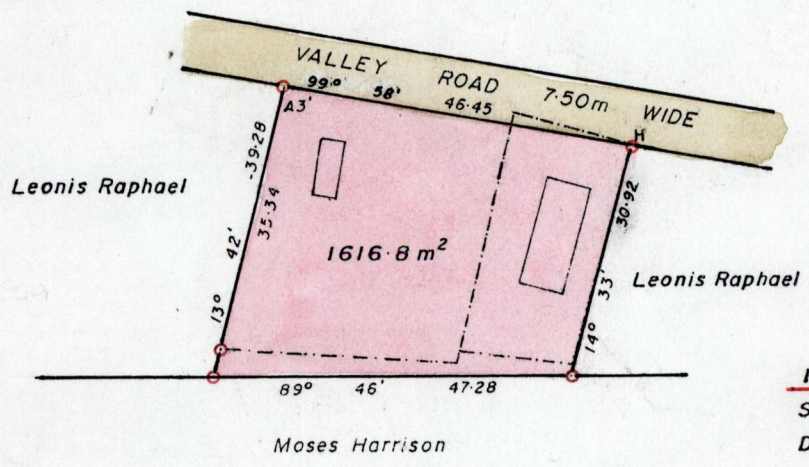
R.P.O. Vol...7
 C.T. Vol...3026
 U.P.R.N No.....

Fol...547
 Fol...403

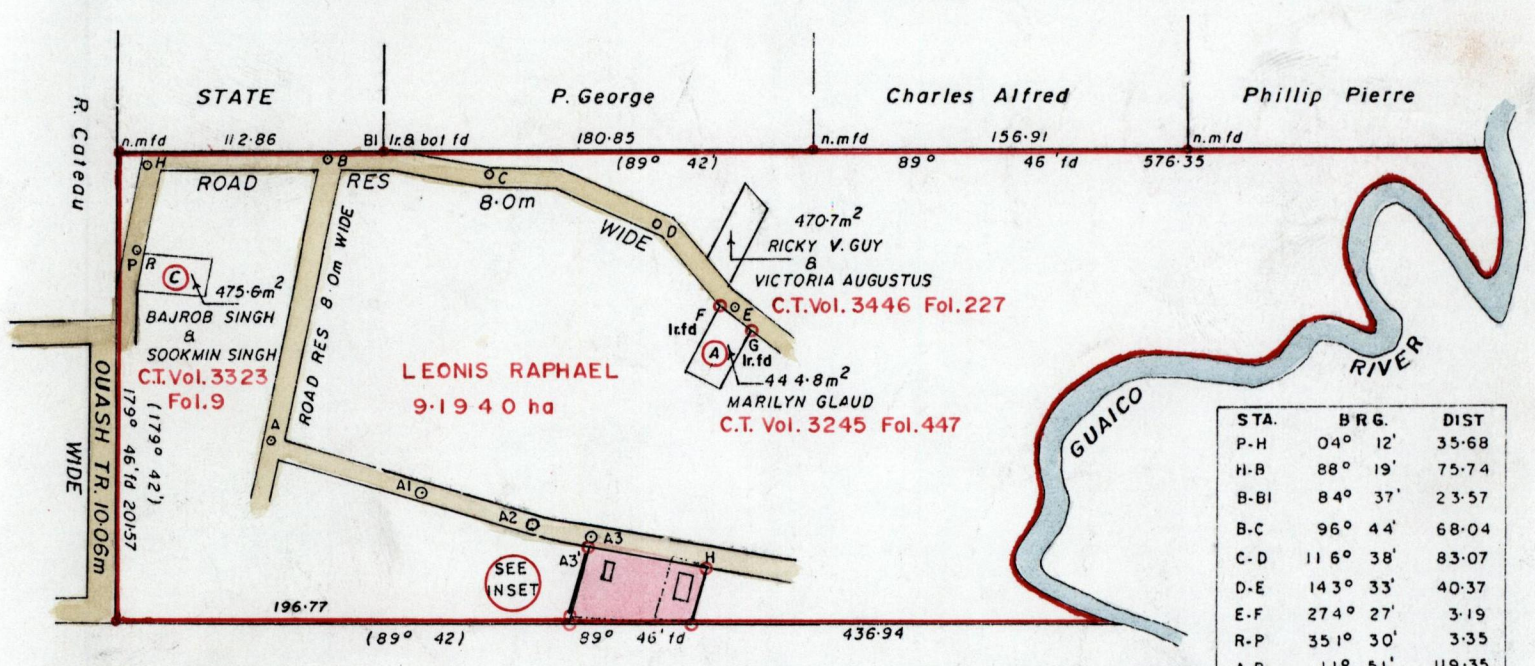
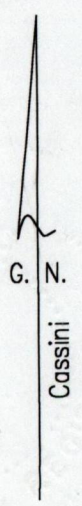
Ward of Manzanilla
 County of St. Andrew
 Cadastral Sheet (C.22.J) $\frac{25F}{2/a}$

Vol. 4818 fol. 461

Process SD#65847



INSET
 SCALE 1:1000
 Distances are in metres

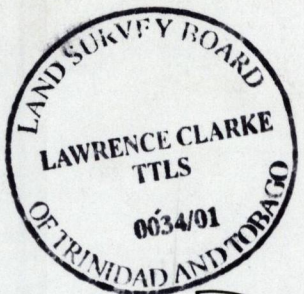


STA.	BRG.	DIST
P-H	04° 12'	35.68
H-B	88° 19'	75.74
B-B1	84° 37'	2.3.57
B-C	96° 44'	68.04
C-D	116° 38'	83.07
D-E	143° 33'	40.37
E-F	274° 27'	3.19
R-P	351° 30'	3.35
A-B	11° 51'	119.35
A-A1	107° 59'	60.92
A1-A2	107° 59'	47.43
A2-A3	101° 08'	40.32
A3-A3'	203° 42'	3.75
G-H	187° 48'	81.46

A-F	78° 13'	191.37
F-G	141° 43'	14.34

SEE BK.174 FOL.35
 SEE BK.1197 FOL.123

SCALE: 4 Chains
 Distances are in metres
 ○ Denotes Iron put unless otherwise stated



Approved: *[Signature]*
 Director of Surveys
 2001.7.26

Bearings are Cassini Grid based on Solar Observations
 Note to obtain compass bearings add /subtract minute

Plan of a Parcel of land coloured pink in the Ward of Manzanilla
 Containing one thousand six hundred and sixteen point eight square metres
 Surveyed by me, with due authority, in December 2001

In accordance with Reg. 25(1) of the Land Surveyors' Regulations 1998,
 I certify that this plan is correct.

Checked by: *[Signature]*

Entered on *[Signature]* Trinidad and Tobago Land Surveyor... 28th December 2001