

1287

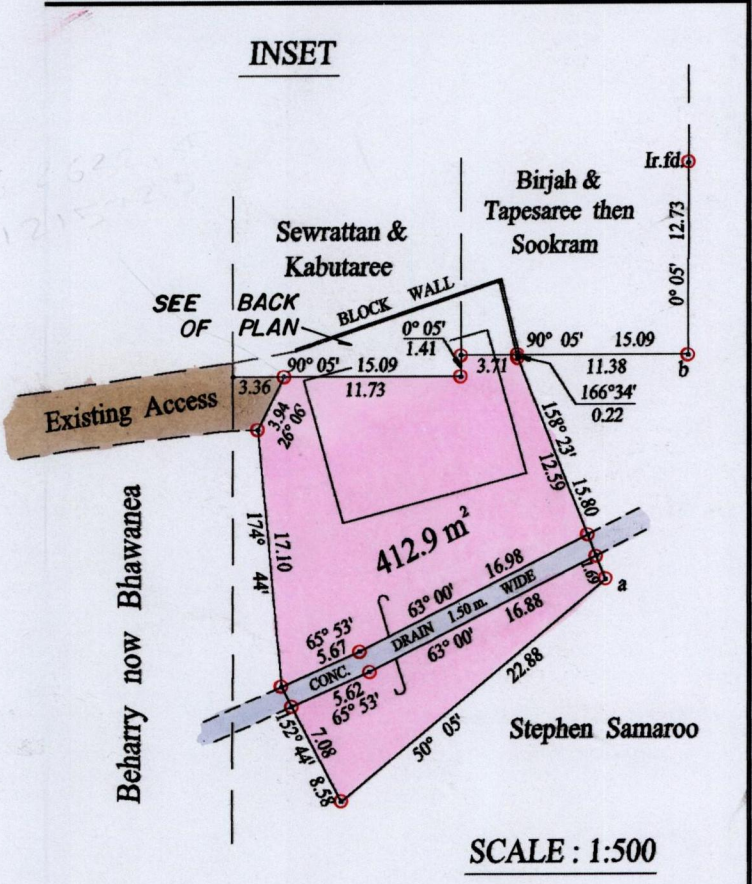
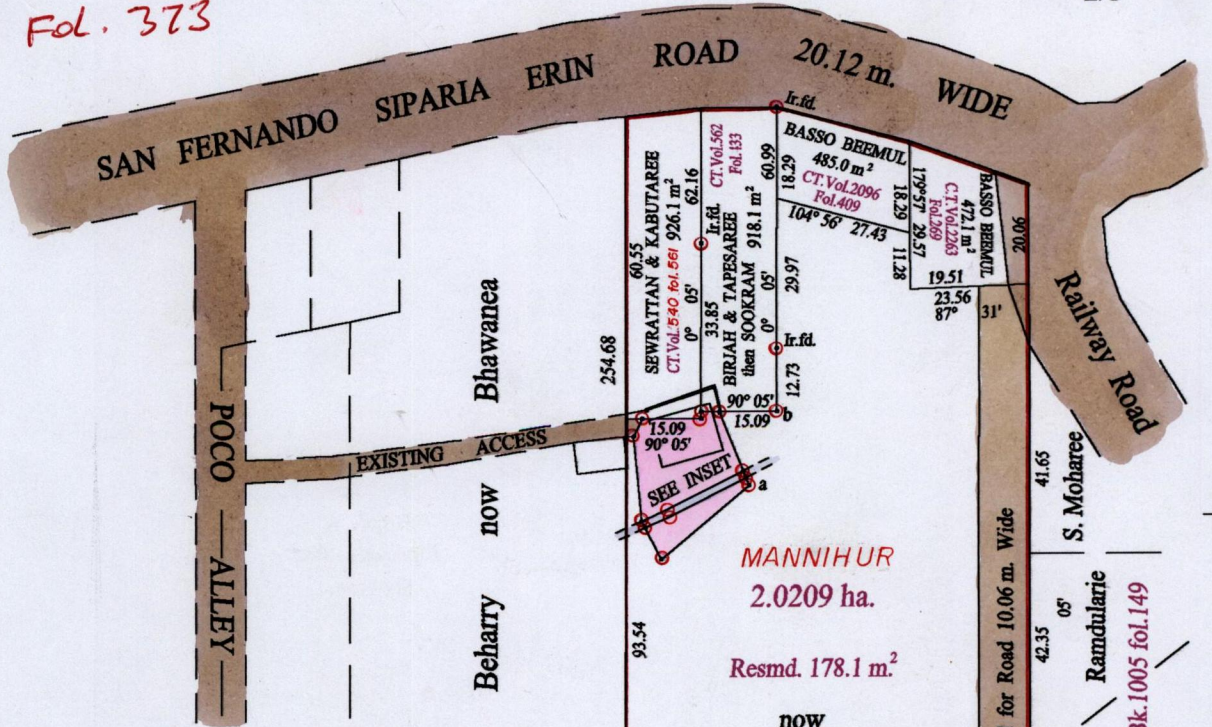
146

R.P.O. Vol. 147 Fol. 145
C.T. Vol. Fol.

Ward of Siparia
County of St. Patrick
Cadastral Sheet (G.17.B) 73.A.
2/b

Process ID +65844

Vol. A762 Fol. 373



Approved *[Signature]*
Director of Surveys
2002.2.4

Original Bk 980.175
Vide Bk.1005 fol.185

a-b 20° 17' 15.87
Stephen Samaroo

o Denotes Iron put except stated otherwise.
Note: Bearings are cassini grid based on solar observations
PLAN of a Parcel of land coloured pink in the Ward of Siparia
Containing four hundred and twelve point nine square metres
Surveyed by me, with due authority, in July 2002
In accordance with Regulation 25 (1) of the Land Surveyors' Regulations 1998,
I certify that this plan is correct.

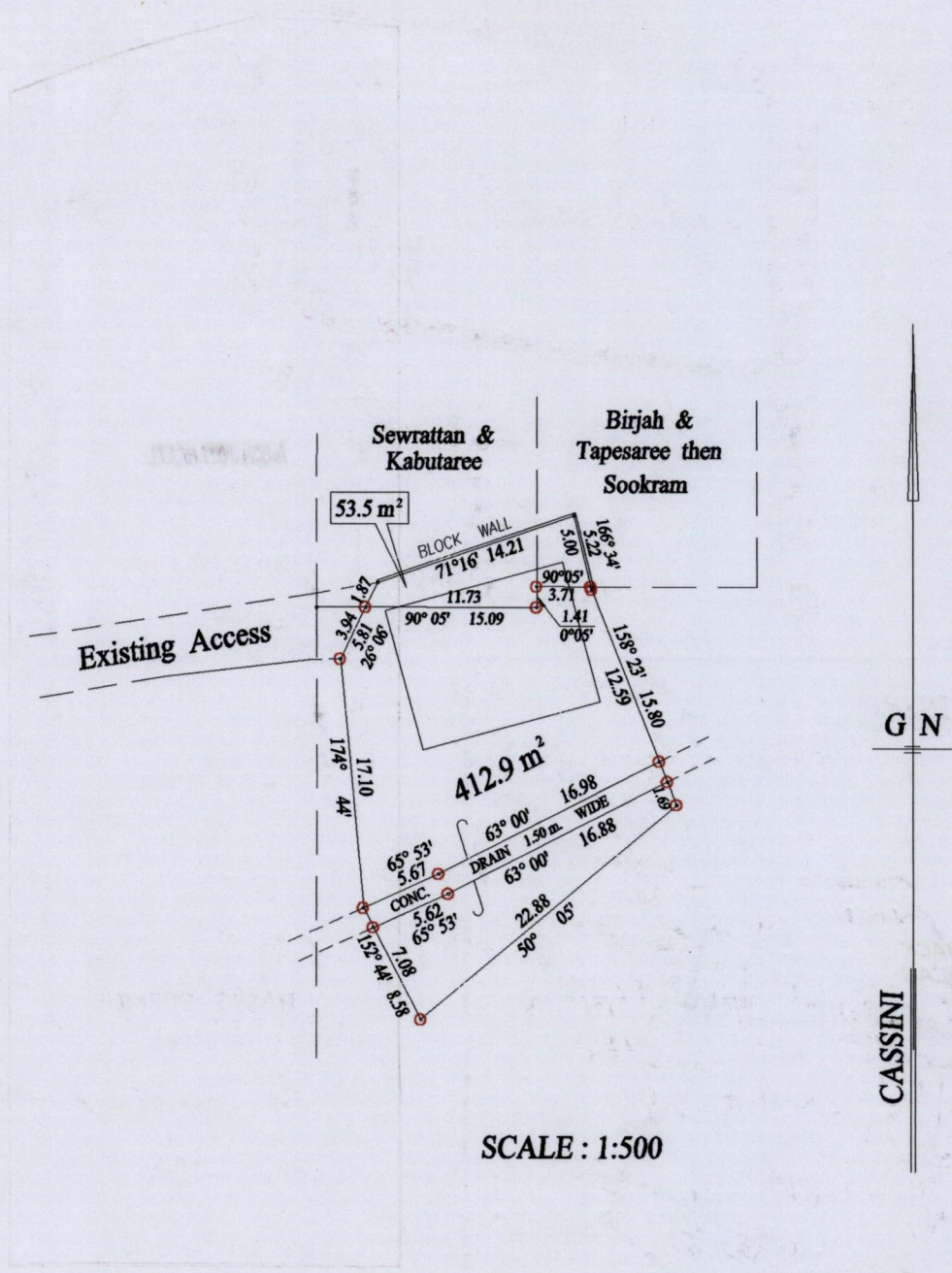
SCALE : 1:1500
Distances are in metres

Checked by *[Signature]* 27/11/03.
Entered on *[Signature]* 21-05-13
Trinidad & Tobago Land Surveyor 27.02.2003



339

1289



27 FEB 2003
Lands and
Surveys
Division

1289/8