

Process ID #65843  
 U.P.R.N No.....  
 R.P.O. Vol. 68  
 C.T. Vol. 3849

1287

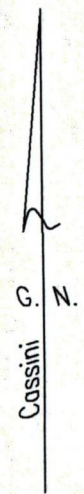
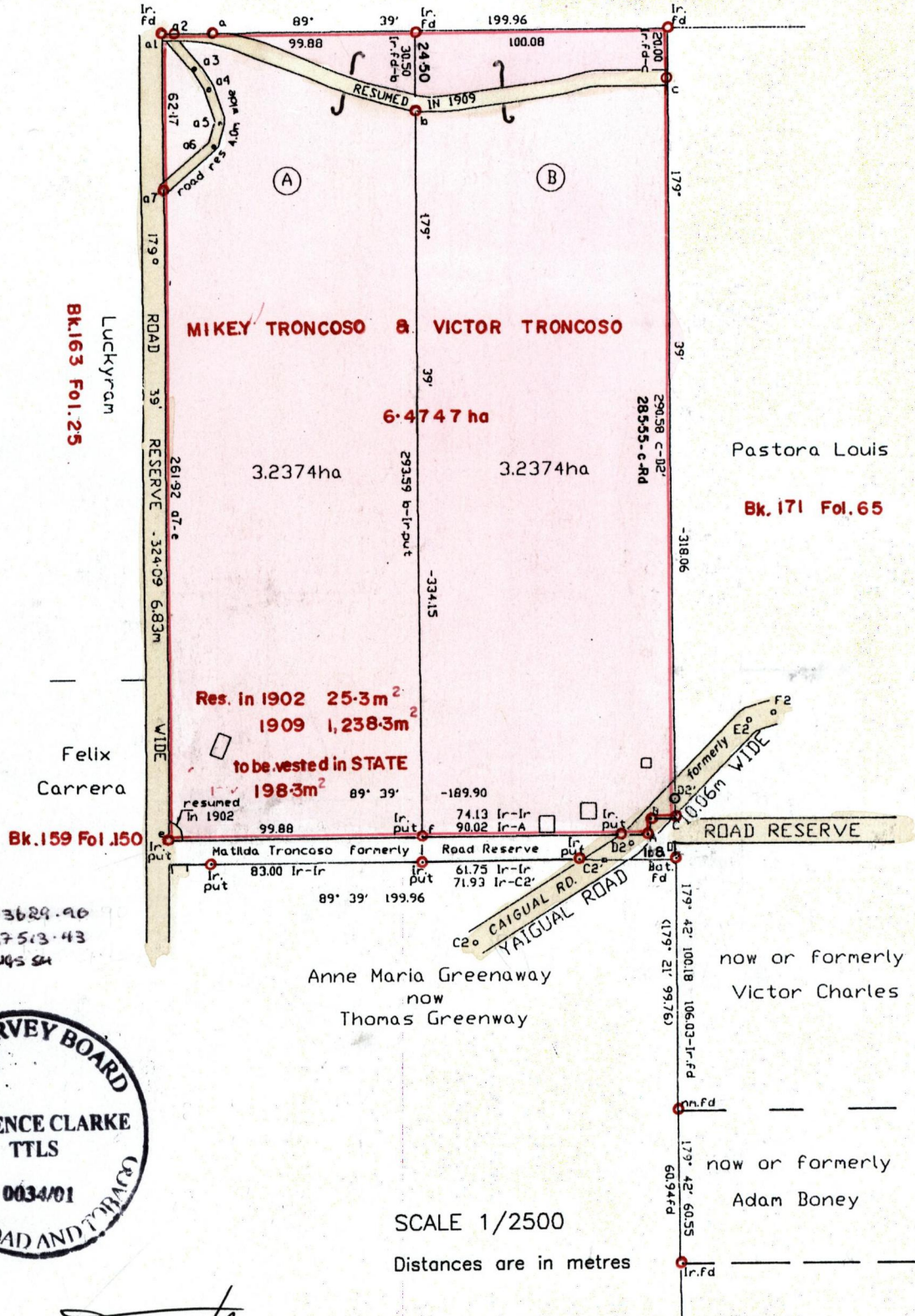
145

Fol. 639  
 Fol. 95

Ward of Manzanilla  
 County of St. Andrew  
 Cadastral Sheet (E.3.F & G) 26D  
 4/d

Vol. 4695 Fol. 197

Beatrice Benjamin  
 Bk. 171 Fol. 93



F2	18.95	
0	10.05	
E2	0	72°33'
E2	67.77	
0	40.23	
D2	24.14	7.48 10.06
0	20.11	179°39'
D2	0	17.54
0	0	43°10'
D2	72.92	
C2	60.35	26.16
0	40.23	
0	20.12	
C2	0	57°21'

STA.	BEA.	DIST
A-B	359°39'	6.03
B-C	89°39'	10.06
C-D	179°39'	10.06
a1-a2	89°39'	2.00
a2-a3	140°31'	17.31
a3-a4	148°07'	10.28
a4-a5	161°28'	13.65
a5-a6	195°43'	10.03
a6-a7	228°23'	26.23

Res. in 1902 25.3m<sup>2</sup>  
 1909 1,238.3m<sup>2</sup>  
 to be vested in STATE  
 198.3m<sup>2</sup>

Bk. 159 Fol. 150

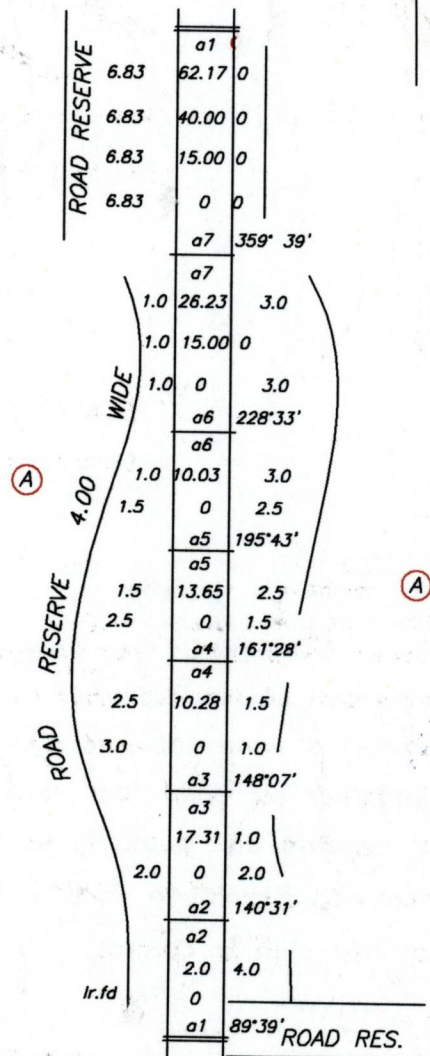
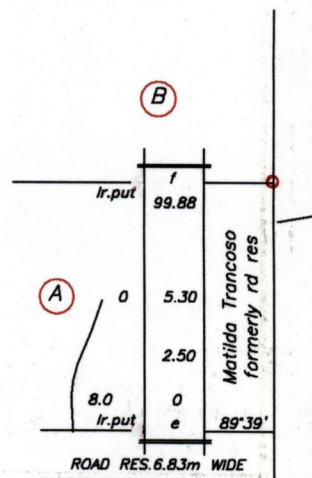
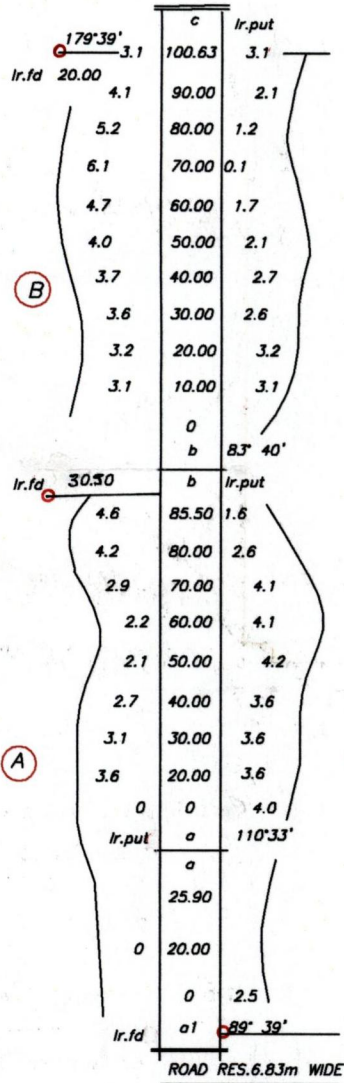
e- 713629.90  
 1167513.43  
 WGS 84



SCALE 1/2500  
 Distances are in metres

Approved.....  
 Director of Surveys 2002-6-18  
 ● Denotes Iron put except otherwise stated  
 Bearings are Cassini Grid based on Solar Observations  
 Note to obtain compass bearings add/subtract minutes  
 Plan of 2 Parcel of land coloured pink in the Ward of Manzanilla  
 Containing Together six point four seven four eight hectares  
 Surveyed by me with due authority in July 2001  
 In accordance with Regulation 25 (1) of the Land Surveyors' Regulations 1998,  
 I certify that this plan is correct.  
 Checked by.....  
 Entered on.....  
 Trinidad and Tobago Land Surveyor..... 3<sup>rd</sup> December 2001

B.



1 JUL 2003  
Lands and  
Surveys  
Division

1289/221