

1287

142

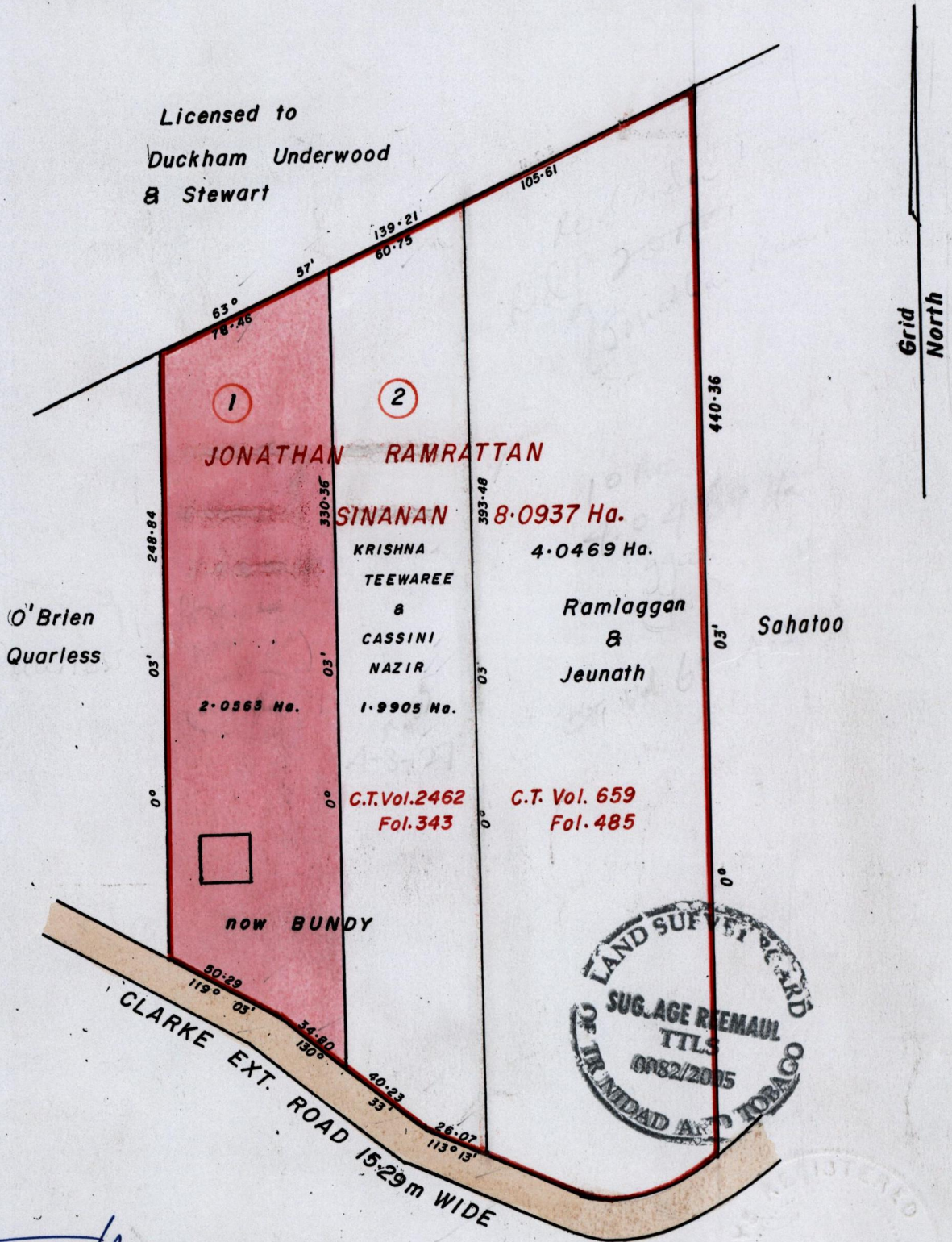
REMAINING PORTION

R.P.O. Vol. 415 Fol. 685  
C.T. Vol. Fol.

Ward of Siparia  
County of St. Patrick 63F  
Cadastral Sheet .G.13.L, 4/a  
Bk. 915 fol. 21, Bk. 1101 fol. 10

Vol. 4736 Fol. 145

Process ID#65833



Approved

*[Signature]*  
 Director of Surveys  
 2005.12.12

1256 : 200

Note: To Obtain compass bearings add 3 minutes

SCALE 1/2500  
Distances are in METRES

This is a true copy of a diagram of originally eight point zero nine three seven hectares granted to JONATHAN RAMRATTAN SINANAN showing a portion coloured pink and containing two point zero five six three hectares being the remainder after two previous transfers of another portion of the land. In accordance with Regulation 25[1] of the Land Surveyors' Regulations 1998, I certify that this plan is correct.

Checked by *[Signature]*  
 2005.12.5  
 M.M. 28/11/05

*[Signature]*  
 Sugaje Remant

Entered C.M.S. 21-05-2013

Trinidad and Tobago Land Surveyor... 18th August, 2005