

1287

133

Process ID#65807

R.P.O. Vol. 387 Fol. 479

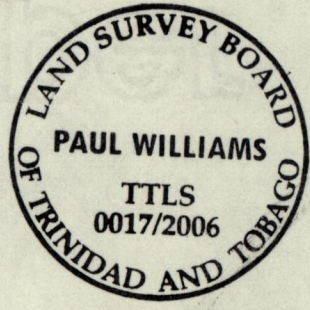
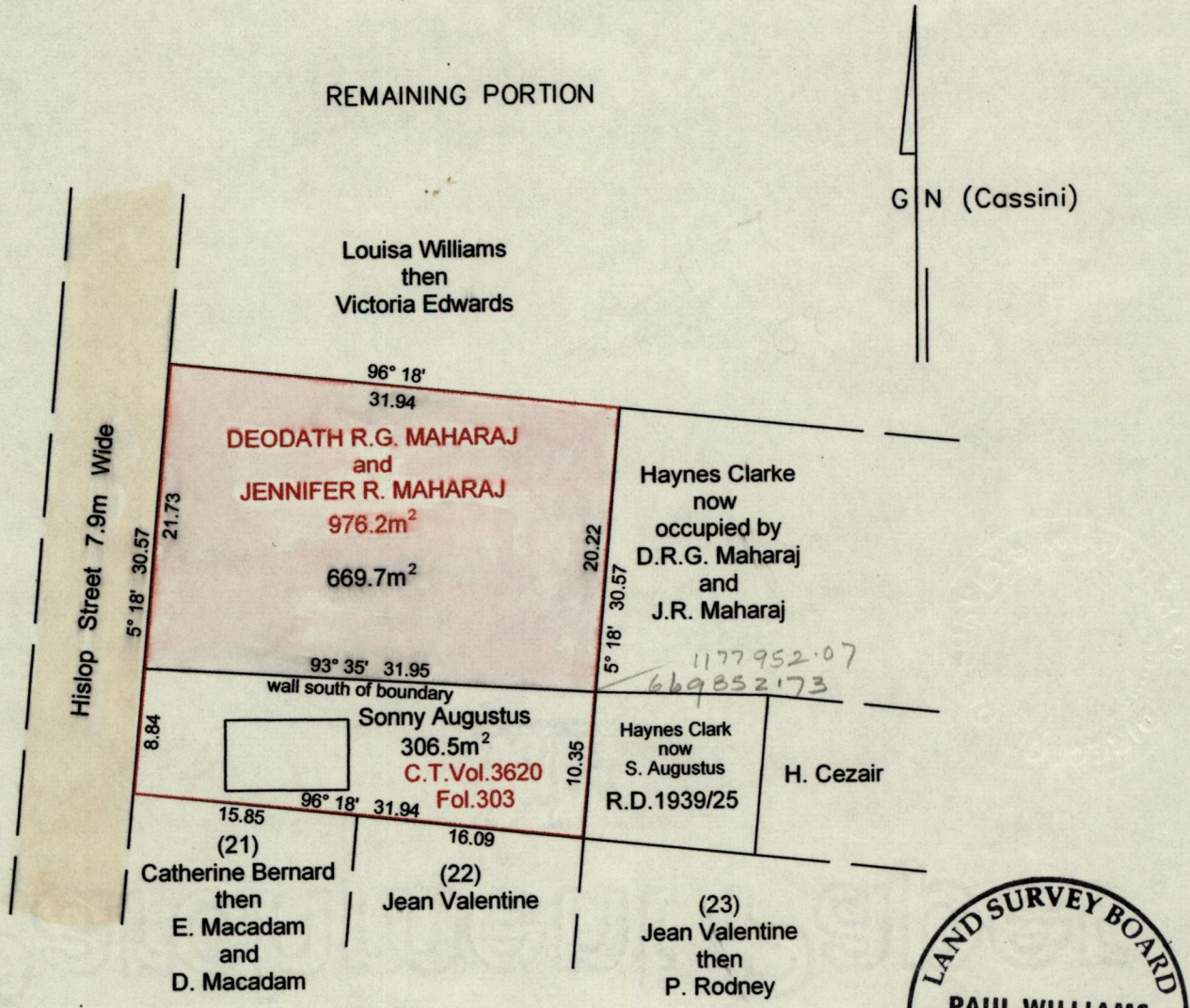
C.T. Vol. 2797 Fol. 481

Vol. 4852 Fol. 475

Cadastral Sheet 1/a (B.17.J.)

Ward of St. Ann's

County of St. George



Approved *[Signature]*
Director of Surveys
2006.12.11

References:
Plan K.C.56
Bk.70 Fol.164
Bk.1197 Fol.88
12/11/1944

SCALE 1:500
Distances are in METRES

Notes: Bearings are Cassini Grid based on Solar Observations

This is a true copy of a diagram of Nine Hundred and Seventy Six point Two square metres originally transferred to Deodath Rajcoomar Gayadath Maharaj and Jennifer Rabioon Maharaj showing a portion coloured pink and containing Six Hundred and Sixty Nine point Seven square metres being the remainder after one previous transfer of a portion of land.

In accordance with regulation 25(1) of the Land Surveyors Regulations 1998, I certify that this plan is correct.

Checked by *[Signature]* Paul Williams

Entered on Trinidad and Tobago Land Surveyor, 06/12/2006