

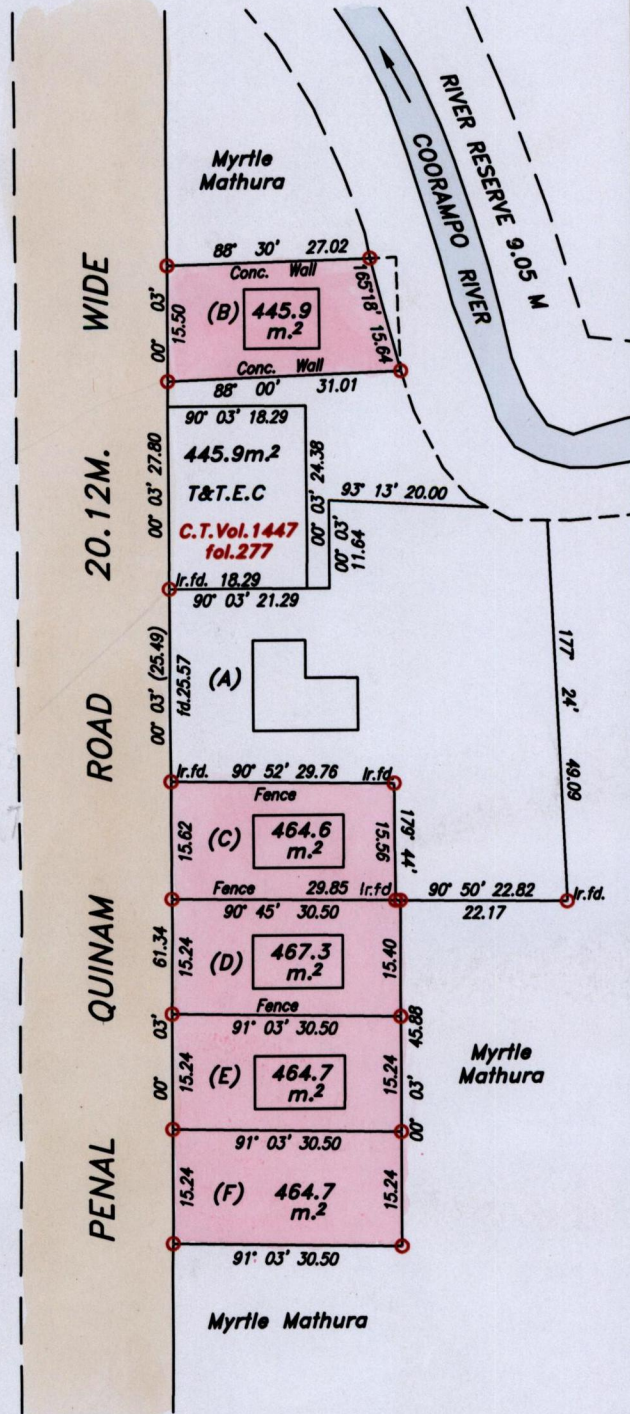
Process ID#65745  
 R.P.O. Vol. 130 Fol. 563  
 C.T. Vol. 3550 Fol. 427  
 Vol. 4752 Fol. 359

1287

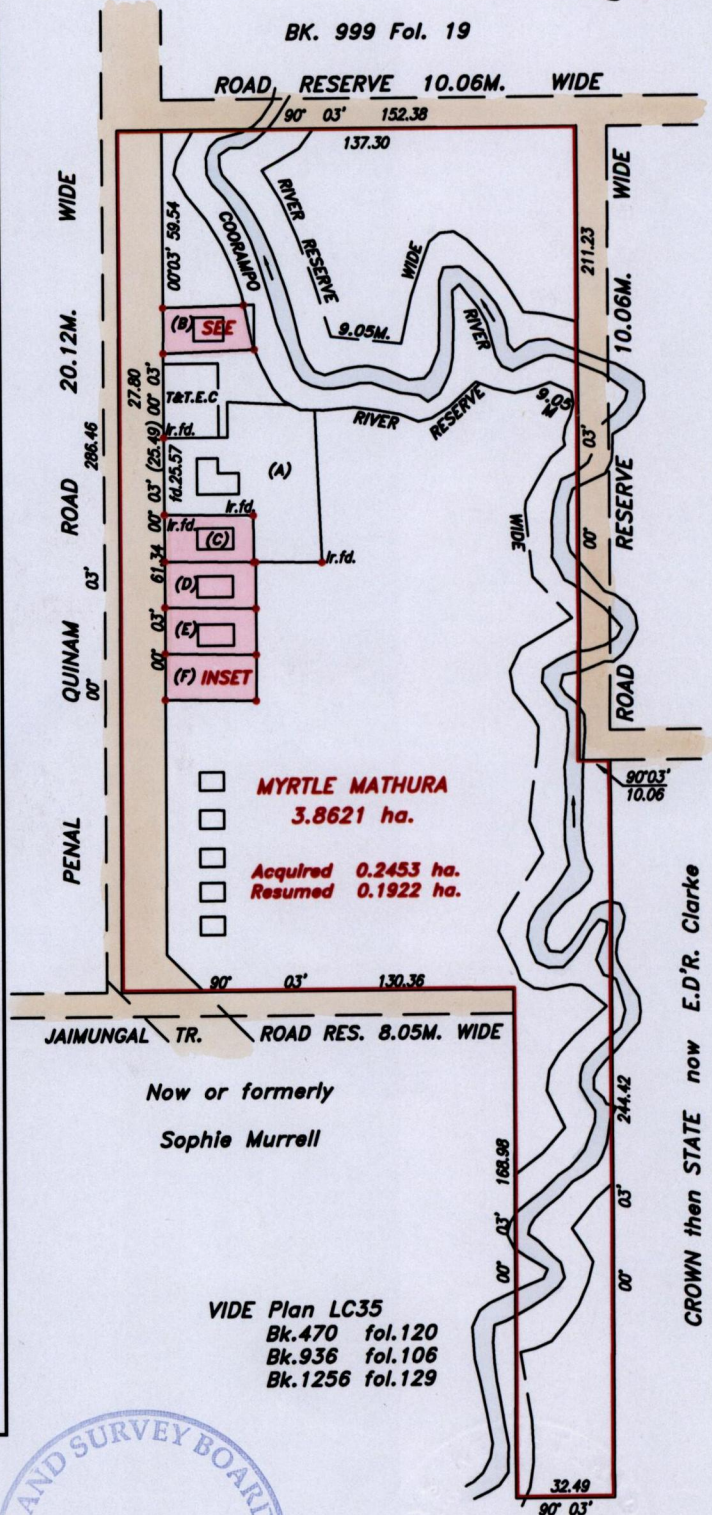
Cadastral Sheet G.13.M, 63E  
 Ward of Siparia 4/d.  
 County of St. Patrick

1288

INSET

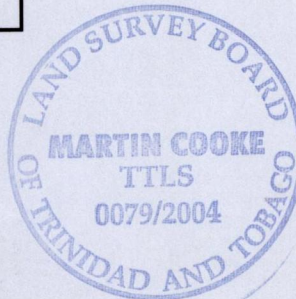


SCALE 1 : 1000  
 Distances are in metres



SCALE 1 : 2500  
 Distances are in metres

Approved *[Signature]*  
 Directors of Surveys  
 2004.6.22



○ Denotes Iron put unless otherwise stated  
 Bearings are Cassini Grid based on Solar Observations  
 Plan of 5 Parcels land coloured pink in the Ward of Siparia  
 Containing together two thousand three hundred and seven point two square metres.  
 Surveyed by me with due authority, in April, 2001.  
 In accordance with Regulation 25 (1) of the Land Surveyors' Regulations 1998,  
 I certify that this plan is correct.

Checked by *[Signature]*  
 Entered by *[Signature]*  
 27-05-13

*[Signature]*  
 Trinidad & Tobago Land Surveyor.. 18th. February 2004

Original Ak 410: 120

B. VOL 4752 FOL 363 Rawlins } Shirley Rankissoon.

C.

D.

E.

F. VOL 4752 FOL 371 Rawlins } Shirley Rankissoon.

18 FEB 2004  
Lands and  
Surveys  
Division