

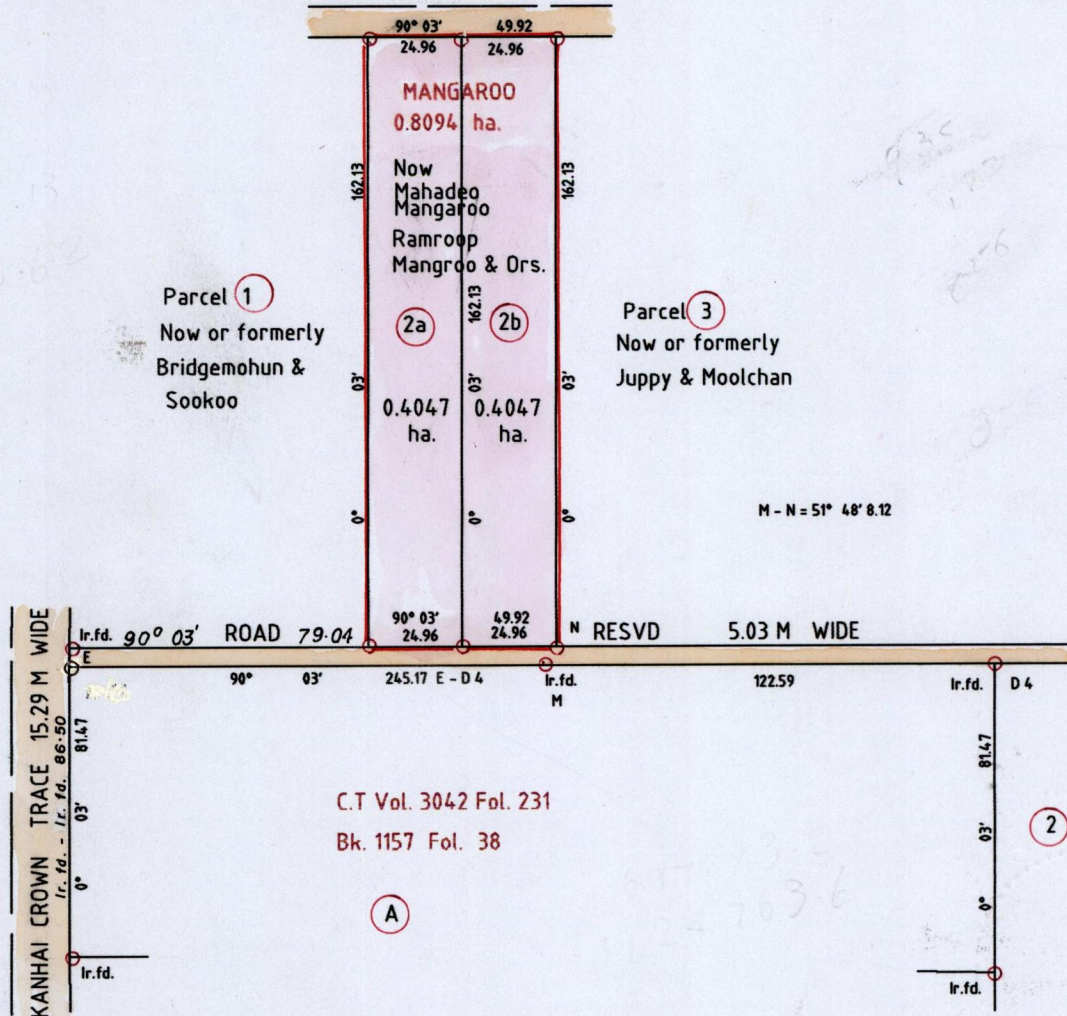
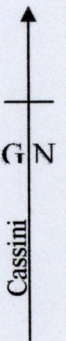
Process ID#65727

R.P.O Vol 712 Fol. 417  
C.T Vol 1078 Fol. 241

Bk. 868 Fol. 43

Vol 4775 Fol 315 ASSIA TRACE 8.05 M WIDE

Ward of Moruga  
County of Victoria  
Cadastral Sheet G 14 K  $\frac{64 D}{4/a}$



Bearings are CASSINI GRID based on solar obs.

○ Denotes iron put except otherwise stated

Approved *[Signature]*  
Director of Surveys  
2003.10.13

SCALE 1:2000

Note: To obtain compass bearings add/subtract minutes Distances are in metres

PLAN of 2 Parcels of land coloured pink in the Ward of Moruga  
Containing together zero point eight zero nine four hectares

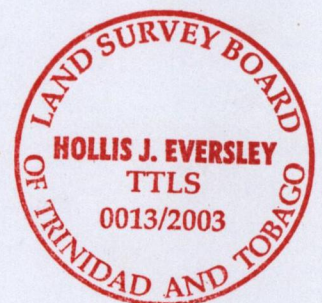
Surveyed by me, with due authority April 2002

In accordance with regulation (25) (1) of the Land Surveyors' Regulations 1998 I certify  
that this plan is correct

Checked by *[Signature]* 2003.10.13

Entered on *[Signature]* Trinidad and Tobago Land Surveyor 3rd April 2003

20-05-13



Original Bk 856:104

2a. Vol 4775 Fol 323

2b. Vol 4775 Fol 333

REPRODUCED  
BY THE  
CANADIAN  
ARCHIVE

30 JUL 2003  
Lands and  
Surveys  
Division  
1279/180