

REMAINING PORTION

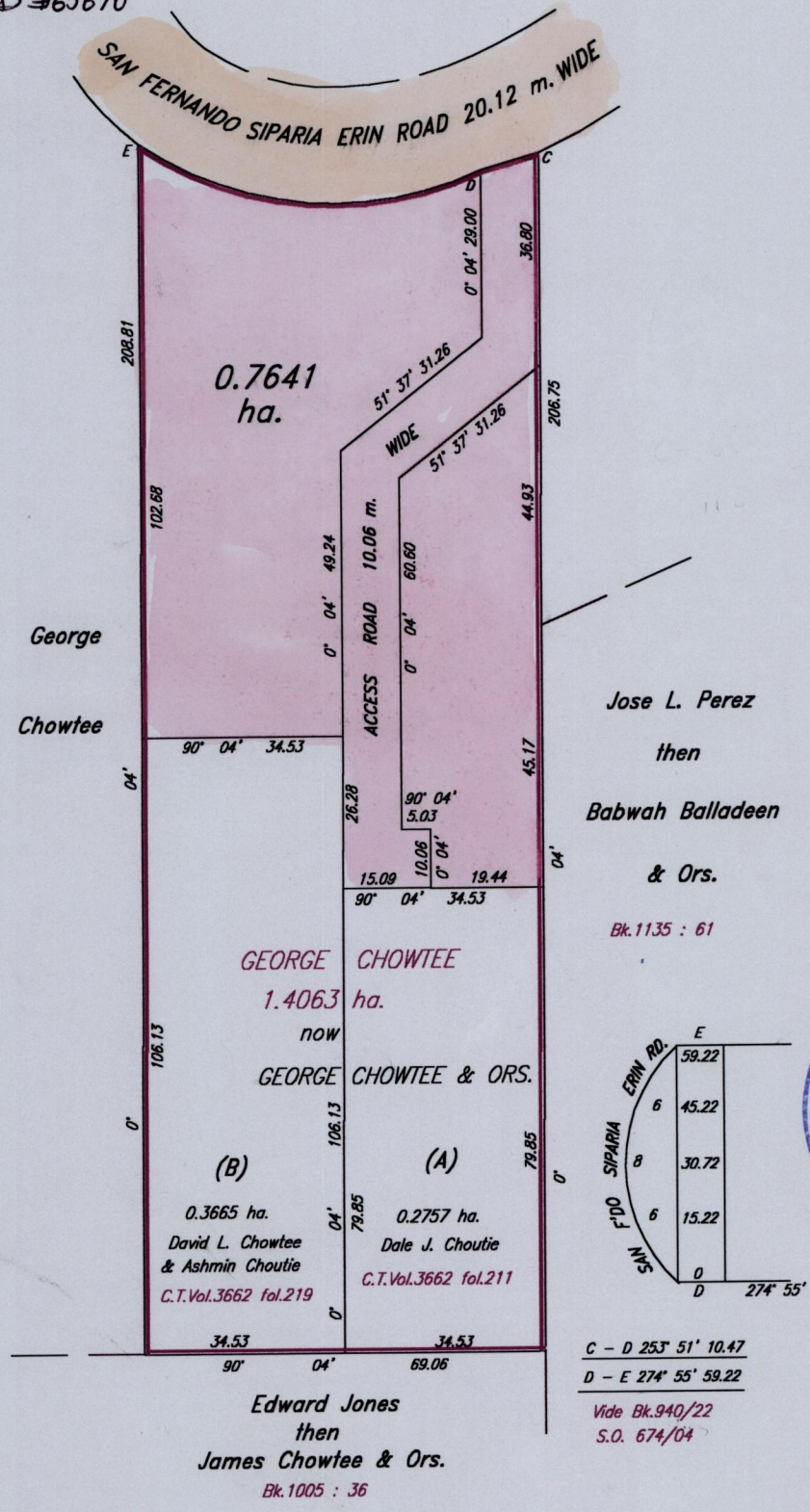
R.P.O.Vol. 140
C.T.Vol. 1502

Fol. 345
Fol. 207

Ward of Siparia
County of St. Patrick
Cadastral Sheet G.12.P. 63E & 73B
3/d 1/b

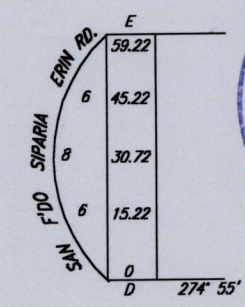
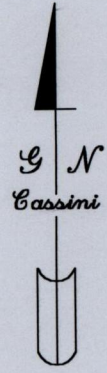
Vol 4622 Fol 97

Process ID #65670



Jose L. Perez
then
Babwah Balladeen
& Ors.

Bk. 1135 : 61



C - D 253° 51' 10.47
D - E 274° 55' 59.22
Vide Bk. 940/22
S.O. 674/04

Approved
[Signature]
Director of Surveys
2003.07.01

subd. Bk 1329:171

SCALE 1 : 1250

Bearings are based on Solar Observations
Note: To obtain compass bearing add /subtract minutes Distances are in metres
This is a true copy of a diagram of one point four zero six three hectares originally granted to GEORGE CHOWTEE, shewing a portion coloured pink and containing zero point seven six four one hectare being the remainder after two previous transfers of another portion of the land.
In accordance with Regulation 25 (1) of the Land Surveyors' Regulations 1998, I certify that this plan is correct.

Checked by *[Signature]* M.M. 11/06/03
Entered *[Signature]* 26th July 2001
Trinidad and Tobago Land Surveyor