

1287

1287

107

Process SD#65669

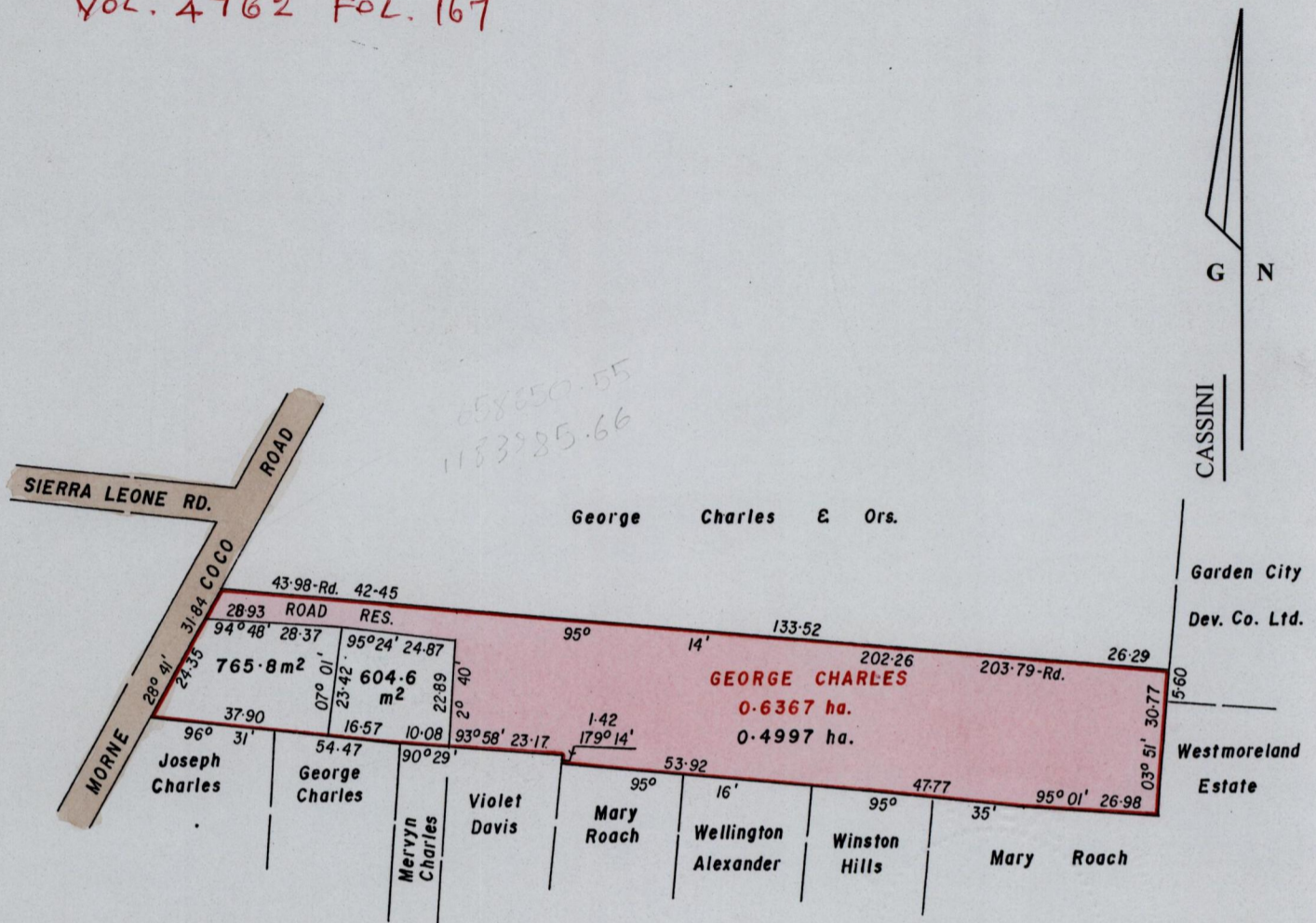
REMAINING PORTION

R.P.O. Vol.
C.T. Vol. 3118

Fol.
Fol. 217

Ward of Diego Martin
County of St. George
Cadastral Sheet A.14.L. 12F
2/d

VOL. 4762 FOL. 167



765.8 m² - Joseph Charles & Ors. - C.T. Vol. 3738:477
604.6 m² - Herman Mayers - C.T. Vol. 3738:483



Approved *[Signature]*
Director of Surveys
2003-7-22

Note: To Obtain compass bearings subtract 3 minutes

SCALE 1/1500
Distances are in METRES

This is a true copy of a diagram of POINT SIX THREE SIX SEVEN HECTARES originally transferred to GEORGE CHARLES showing a portion coloured pink and containing POINT FOUR NINE NINE SEVEN HECTARES being the remainder after two (2) previous transfer of another portion of the land. the dividing lines having been run in accordance with Regulation 25[1] of the Land Surveyors' Regulations 1998, I certify that this plan is correct.

Checked by *[Signature]* 22-7-03
Entered *[Signature]* 03-07-13

[Signature]
Trinidad and Tobago Land Surveyor
17th February 2002