

1282

94

B N<sup>o</sup> 4179

Process *LDH 66204*

R.P.O. Vol. 181

Fol. 193

Ward of San Rafael

C.T. Vol. 1107

Fol. 207

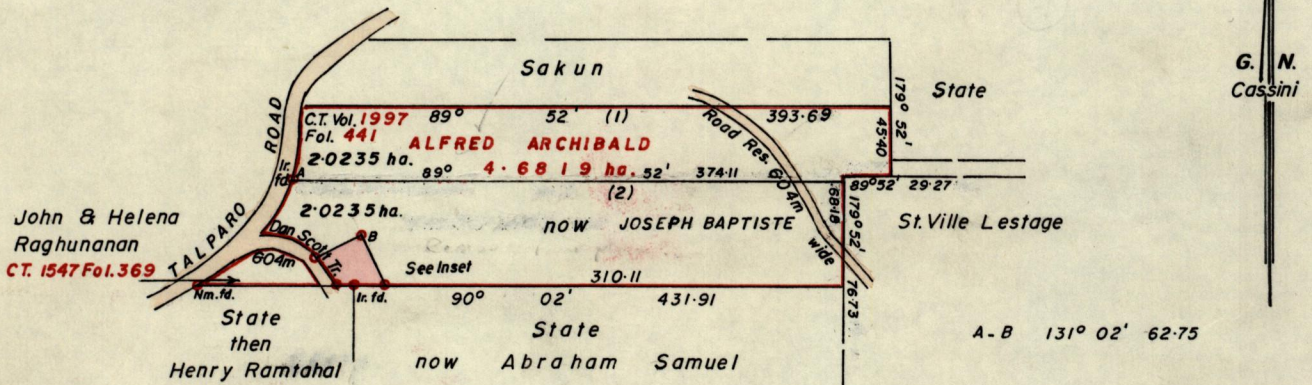
County of St. George

Vol. 4105

Fol. 331

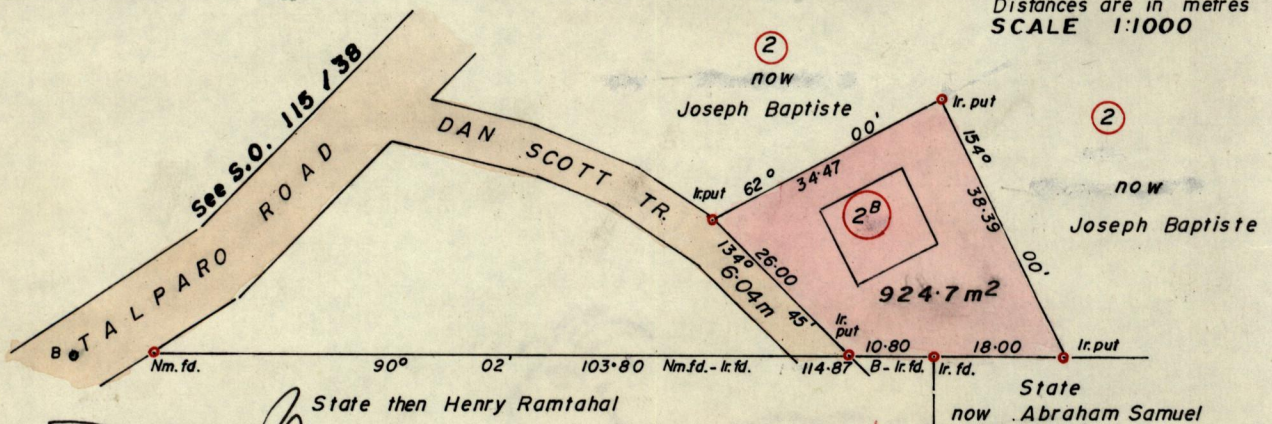
Cadastral Sheet D 10 E

34C  
47C



INSET

Distances are in metres  
SCALE 1:1000



Approved

*[Signature]*  
Director of Surveys

Bearings are based on solar observations.

Note: To obtain compass bearings add/subtract 08 minutes

Orig Bk 985:6

Selma & Minood Charles

SCALE 1:5000

E. 689262  
N. 1161814

Distances are in metres

PLAN of a Parcel of land coloured pink in the Ward of San Rafael  
Containing nine hundred and twenty four point seven square metres  
Surveyed by me, with due authority, in December 1996

I certify that I have complied with rule 76 under section 14(2)(d) of the  
Land Surveyors' Ordinance, 1952, and that this plan is correct.

Checked by *[Signature]* *[Signature]*

Entered *[Signature]* Land Surveyor, Trinidad and Tobago 2nd January 1997