

REMAINING PORTION

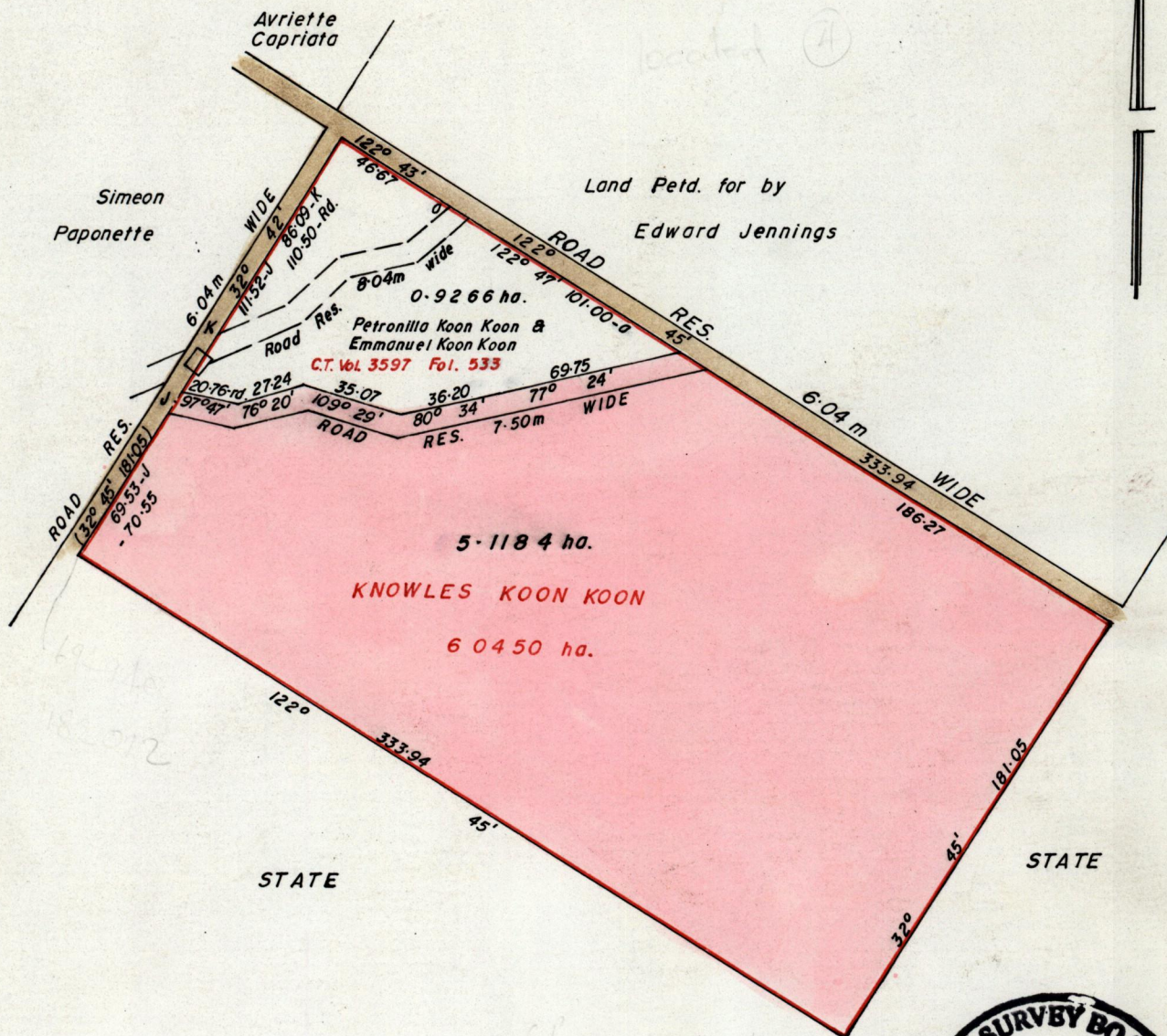
1282

84

Process ID# 66159  
R.P.O. Vol. 132 Fol. 61  
C.T. Vol. 3063 Fol. 51  
U.P.R.N. No.  
Vol. 4369 Fol. 459

Ward of Arima  
County of St. George  
Cadastral Sheet 15 D  
2/c

See Bk. 1211 Fol. 119



Approved by  
*[Signature]*  
Director of Surveys  
2002-03-04

Mark Anthony Joseph  
SCALE:- 1:2500  
Distances are in metres

Note: To obtain compass bearings add/ subtract minutes  
This is a true copy of a diagram of six point zero four five zero hectares originally transferred to KNOWLES KOON KOON shewing a portion coloured pink and containing Five point one one eight four hectares being the remainder after ONE previous transfer of another portion of land  
In accordance with Rule 25 (1) of the Land Surveyors' Regulations 1998, I certify that this plan is correct.

Checked by *[Signature]*  
Entered on 15D 8/03  
*[Signature]*

*[Signature]*  
Trinidad & Tobago Land Surveyor 22nd May 2001