

Process ID# 66135

R.P.O. Vol. 383 Fol. 393

C.T. Vol. 1657 Fol. 373

Vol. 4229 fol. 7

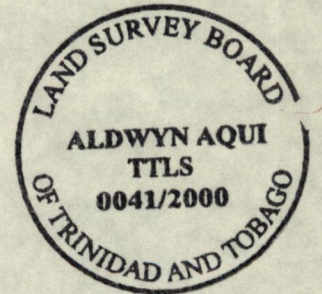
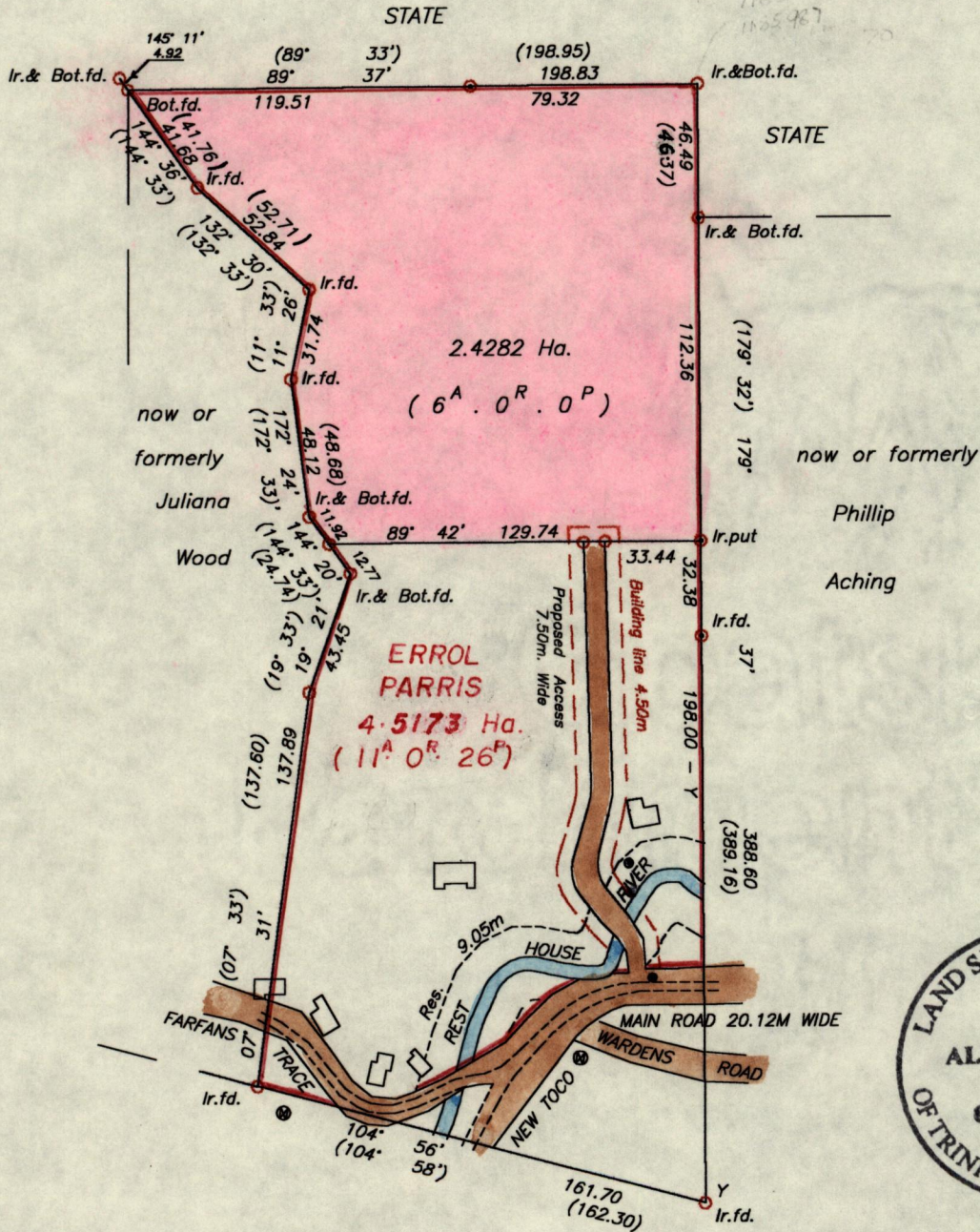
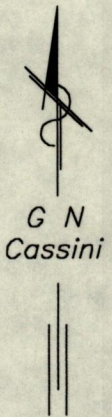
Orig. Bk. 201 fol. 8
Bk 973 fol. 137

1282

Cadastral Sheet C.14.E 16B 4/b 77

Ward of Matura

County of St. Andrew



Ray & Sharaden Snowden

- PYLON
- ELECTRICITY

Approved *[Signature]*
24 Director of Surveys 2000.10.5

○ Denotes Iron put unless otherwise stated
Bearings are based on Solar observations

To obtain compass bearing add 27 minutes.

PLAN of a Parcel of land coloured pink in the Ward of Matura
Containing two point four two eight two hectares

Surveyed by me, with due authority, in September 1994 and August 2000 for Earl Bagot
In accordance with Rule 25 (1) of the Land Surveyors' Regulations 1998,
I certify that this Plan is correct.

Checked by *[Signature]* T.T.L.S.

Entered on 12/5/03 CE 16B
TBelmonte 46

Trinidad and Tobago Land Surveyor 24.08.2000

SCALE 1:2500

Distances are in METRES