

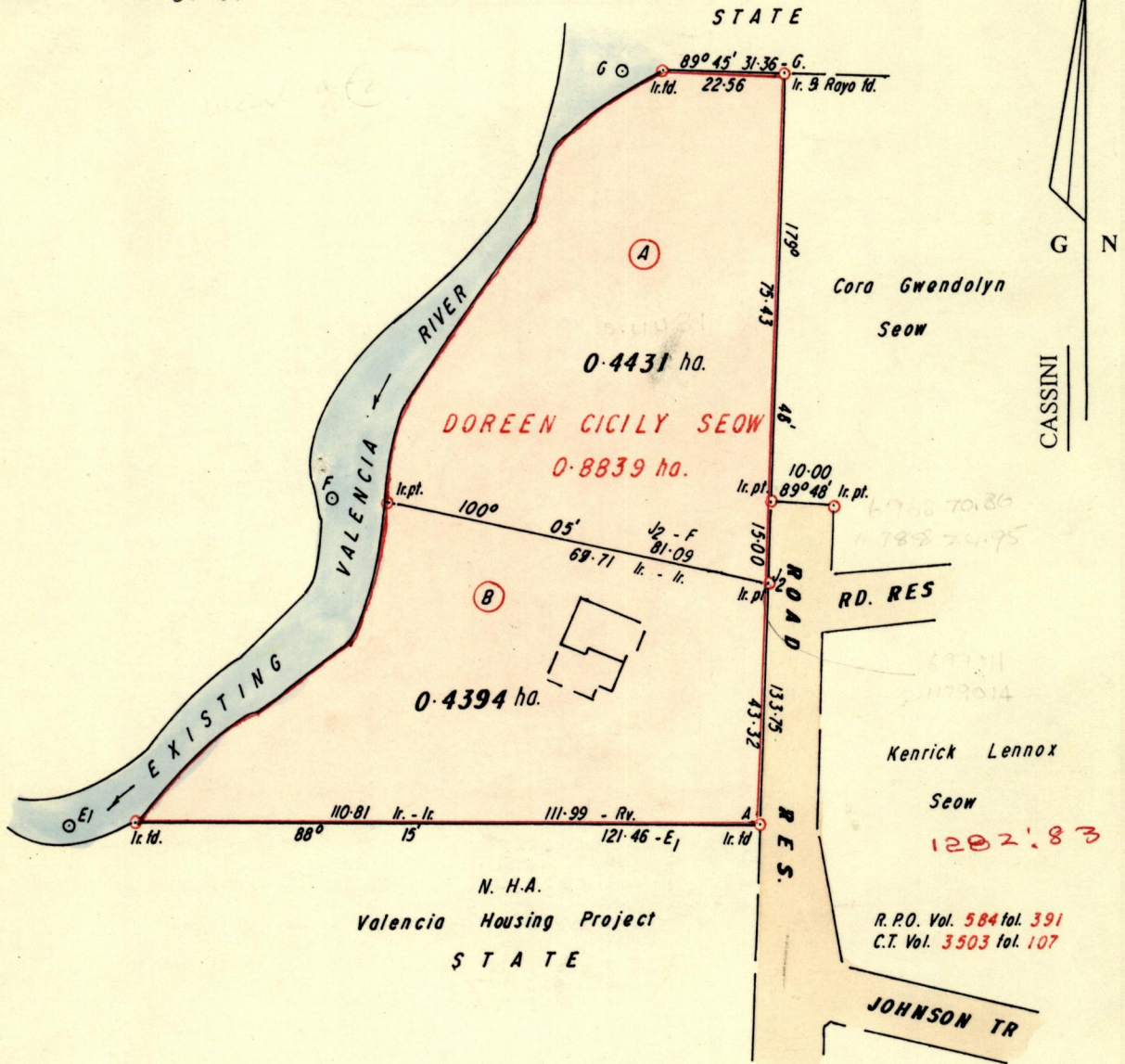
R.P.O. Vol. 584  
C.T. Vol. 3503

Fol. 391  
Fol. 103

Ward of Valencia  
County of St. Andrew  
Cadastral Sheet  $\frac{15E}{3/c}$ , C. 16. 1.

Vol. 4259 Fol. 49

Process LD#65981



E <sub>1</sub> - F	34° 04'	73.92
F - G	32° 20'	90.04

For River Notes See PLAN J. A. 259

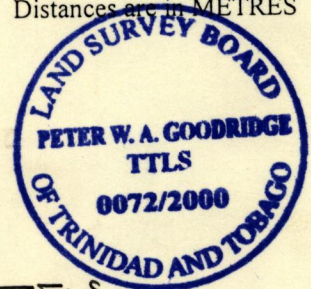
Approved

*[Signature]*  
Director of Surveys 2000.9.13

○ Denotes Iron put unless otherwise stated  
Bearings are Cassini Grid based on Solar Obs.  
SCALE 1 / 1250  
minutes Distances are in METRES

Note: To Obtain compass bearings add/subtract

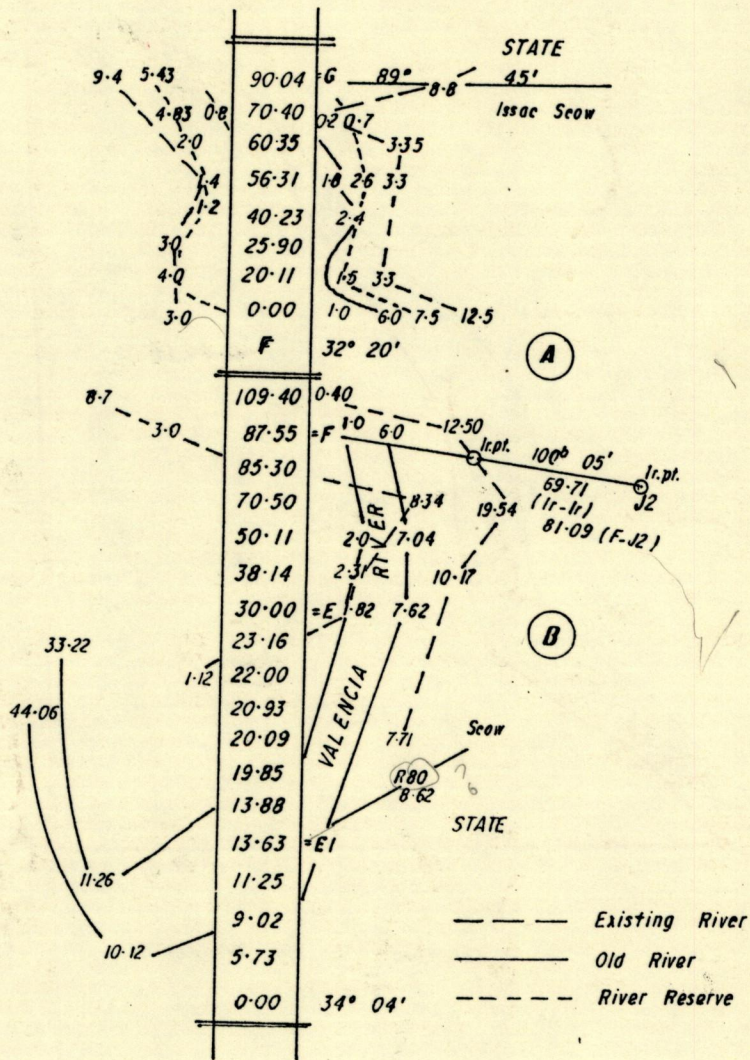
PLAN of 2 Parcel of land coloured PINK in the Ward of Valencia  
Containing together zero point eight eight two five hectares  
Surveyed by me, with due authority, in February 2000  
In accordance with Rule 25 (1), of the Land Surveyors Regulations 1998.  
I certify that this plan is correct.



Checked by *[Signature]* 00.09.02

Entered *[Signature]* 15E 8/03, Trinidad and Tobago Land Surveyor *[Signature]* 24th April 2000

Original PLAN J.A. 259



Lot A Vol. 4259 Pl. 45 Martin Belix

Lot B Vol. 4783 Pl. 371 Gail Elizabeth Bartholomew

1749 V102 / 205  
 1 MAY 2000  
 Ends at