

No 19239

Process 65977

R.P.O. Vol. 656

Fol. 73

C.T. Vol.

Fol.

Vol. 4238

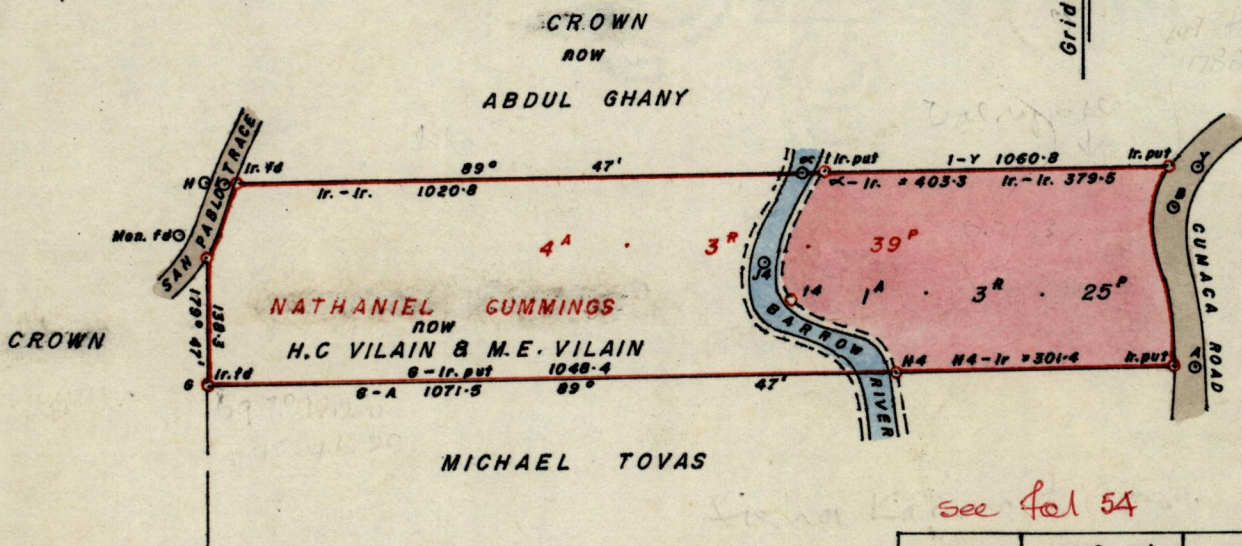
Fol. 159

Ward of Valencia  
County of St. Andrew  
Cadastral Sheet c.16.J  
Bk. 1053 Fol. 776

15E  
3d

Vide S.O. 208/28

Orig Bk 612: 171



see fol 54

G - Noa. Id	349° 33'	167.1
G - H	359° 47'	221.1
H - I	89° 47'	20.1
I - Ir. Id	89° 47'	11.8
H - Y	89° 47'	1080.9
A - B	352° 49'	185.6
B - Y	40° 17'	50.7
H4 - 14	126° 22'	133.0
14 - J4	327° 05'	42.6
J4 - α	16° 13'	108.2

Approved

*Asha Karim*  
 Director of Surveys  
 87.08.18

SCALE 1/2500

Asha Karim & Co.

Note: To obtain compass bearings add/subtract 13 minutes Distances are in feet

PLAN of a Parcel of land coloured pink in the Ward of Valencia  
Containing One acre, three roods and twenty five perches

Surveyed by me, with due authority, in April 1976 for Abraham Dalrymple

I certify that I have complied with rule 76 under section 14(2)(d) of the  
Land Surveyors' Ordinance 1952, and that this plan is correct.

Checked by *ASL 87.8.18*

*[Signature]*

Entered 15E 8/03

Land Surveyor, Trinidad 11.4.1979

G.P., Tr./To.-943-20,000-183

*Belmonte*

27-03-01