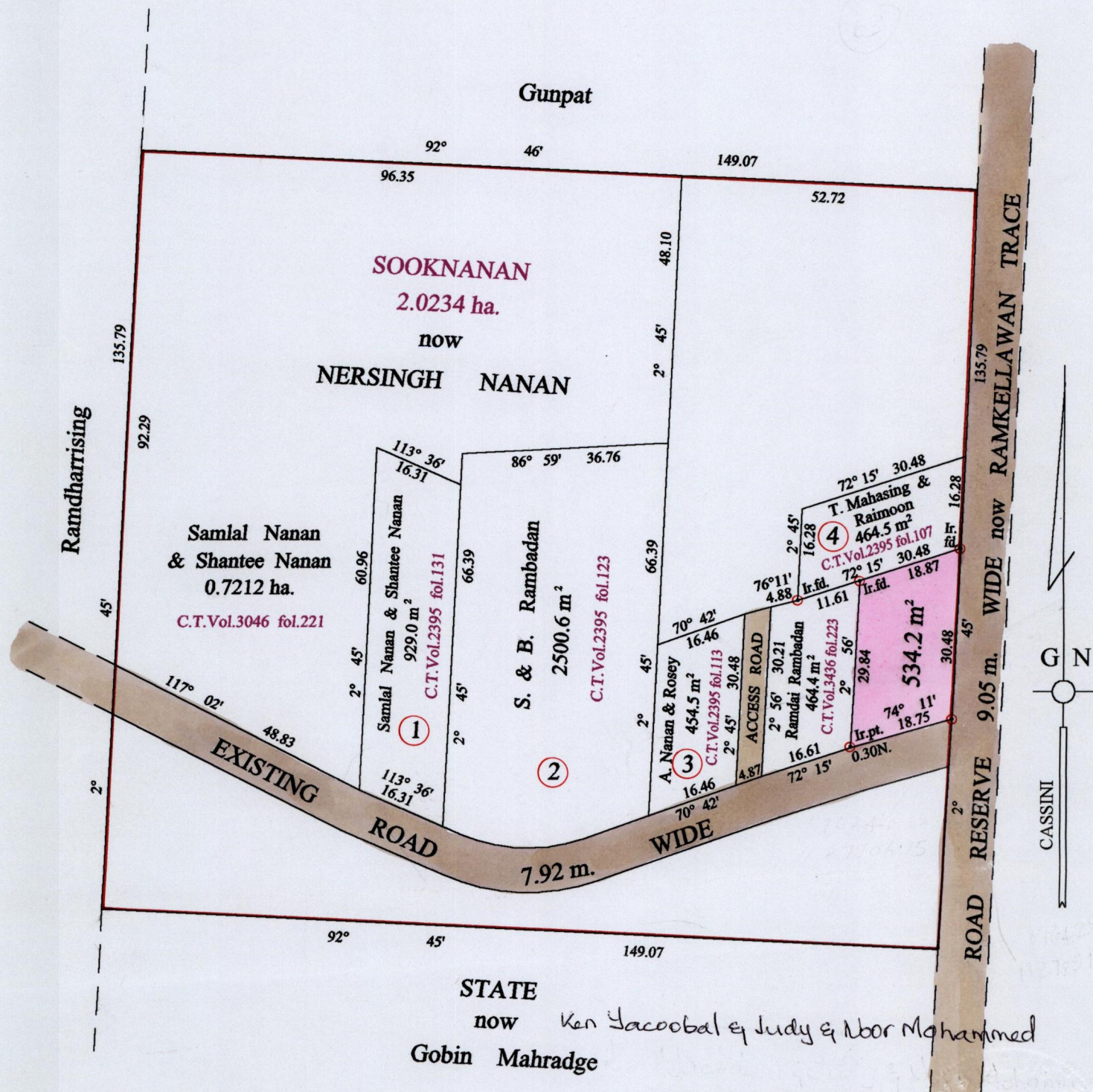


Process ID# 66033
 R.P.O. Vol. 13 Fol. 309
 C.T. Vol. 1957 Fol. 271
 Vol. 4449 fol. 233

1282

49

Ward of Naparima
 County of Victoria
 Cadastral Sheet (G.14.B.) 64.A
 3/d



Vide Bk.455 fol.183
 " Bk.1135 fol.667
 " Bk.980 fol.76
 " Bk.1145 fol.122

Approved *[Signature]*
 Director of Surveys 2003.3.17

○ Denotes Iron put except stated otherwise.
 Note: Bearings are cassini grid based on solar observations
 PLAN of a Parcel of land coloured pink in the Ward of Naparima
 Containing five hundred and thirty four point two square metres
 Surveyed by me, with due authority, in October 2001
 In accordance with Regulation 25 (1) of the Land Surveyors' Regulations 1998
 I certify that this plan is correct.

SCALE : 1:1000
 Distances are in metres

Checked by M.M. 10/03/03
 Entered on 29-05-13 64A 8/03
 Trinidad & Tobago Land Surveyor

