

1282 44

Process ID# 66019

R.P.O Vol. Fol.

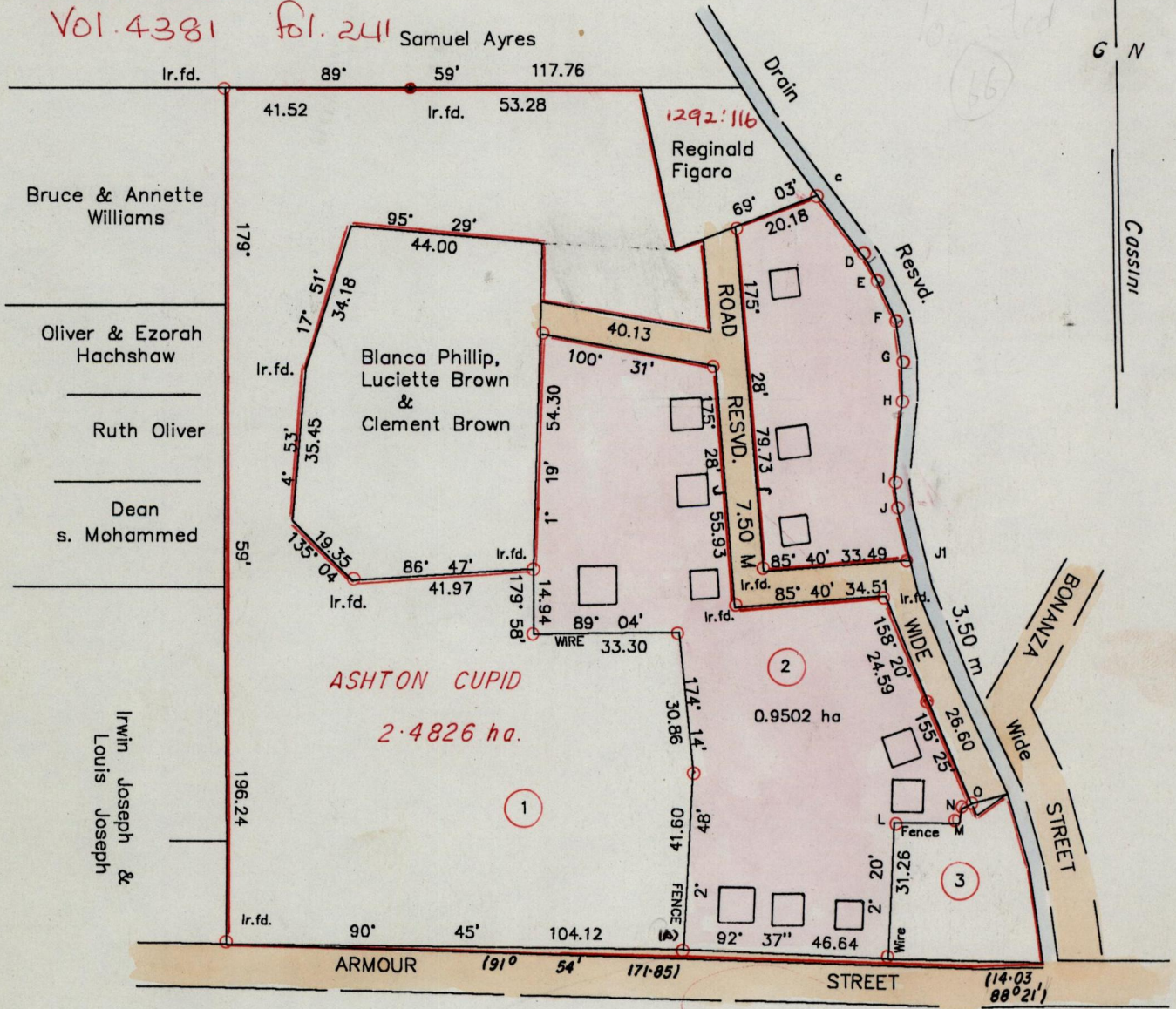
C.T Vol. 4172 Fol. 495

Bk.1229 Fol. 216

Vol. 4381 Fol. 241

Ward of Savana Grande  
County of Victoria  
Cadastral Sheet G 4K

54D  
4/a 3



Stat. From	Stat. To.	Bgs.	Dist.
C	D	143° 30'	19.00
D	E	152° 41'	6.03
E	F	155° 41'	8.72
F	G	171° 16'	9.63
G	H	179° 53'	9.04
H	I	185° 39'	19.06
I	J	172° 48'	6.17
J	J1	166° 38'	12.24
L	M	91° 09'	14.72
M	N	9° 18'	3.52
N	O	62° 04'	2.51

(A) - 677983

1135417

WGS 84.

○ Denotes iron put except otherwise stated  
Bearings are Cassini Grid based on solar obs.  
Approved

*[Signature]*  
Director of Surveys  
2002-05-17

*[Signature]*  
Clyde Phillip

SCALE 1:1500

Note: To obtain compass bearings add/subtract minutes Distances are in metres

PLAN of a Parcel of land coloured pink in the Ward of Savana Grande

Containing Zero point nine five zero two hectares

Surveyed by me, with due authority, in May 2001

In accordance with rule (25) (1) of the Land Surveyors Regulations 1998 I certify that this plan is correct.

Checked by *[Signature]*

Entered 54D 8/03 Trinidad and Tobago Land Surveyor *[Signature]* 27 June 2001

