

Vol. 4405 fol. 29

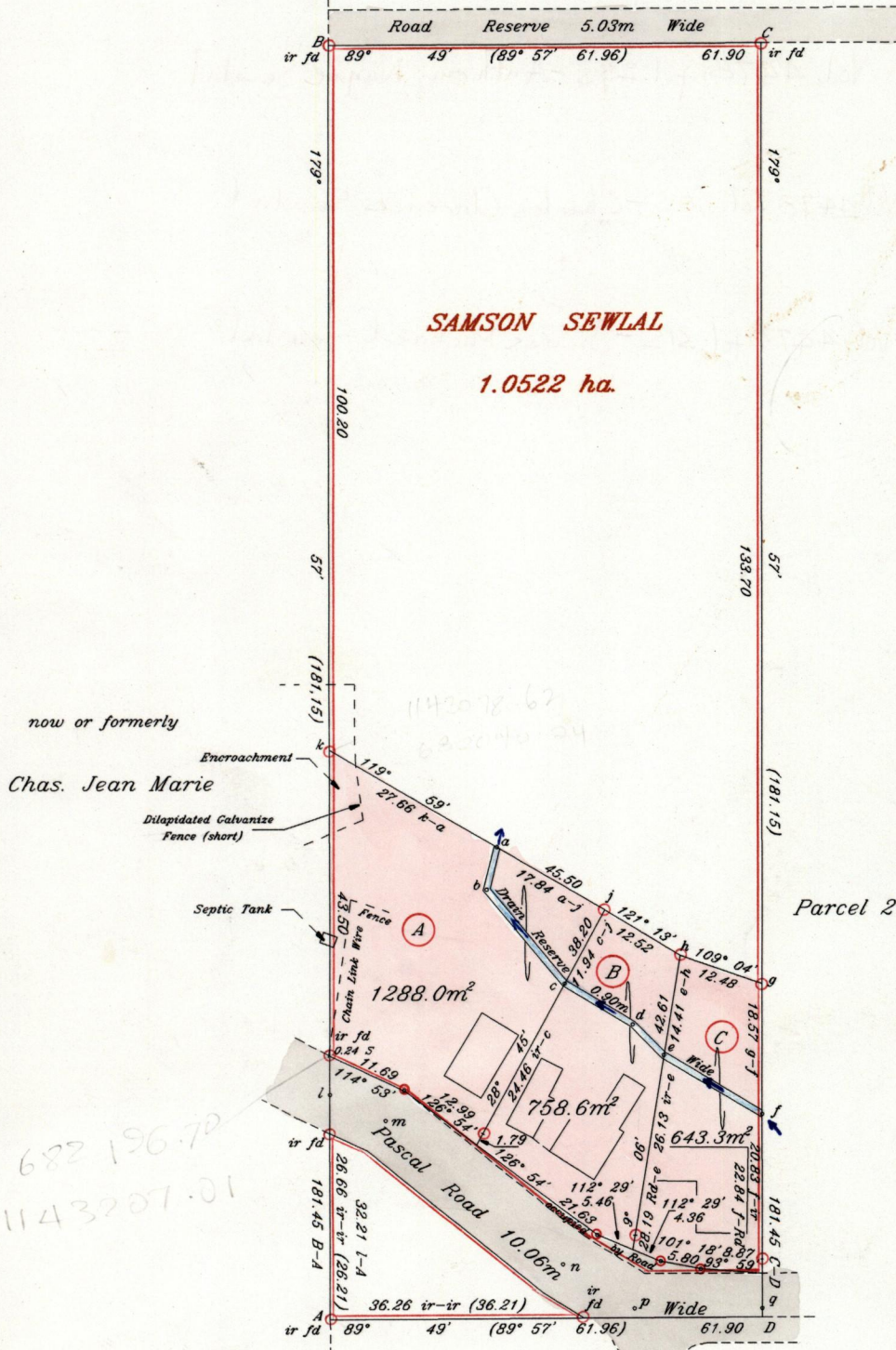
Process ID# 66016

1282

43

located
15

G.N. Cassini



Legend		
a - b	193° 51'	6.21
b - c	140° 01'	17.43
c - d	120° 48'	11.35
d - e	135° 08'	6.27
e - f	120° 51'	16.41
l - m	114° 53'	8.73
m - n	129° 06'	32.79
n - p	121° 54'	12.05
p - q	89° 57'	18.32
q - D	179° 57'	1.32

682 196.70
1143207.01

Chain link fence
at Reserve

Approved

 Director of Surveys
 2002-03-04

Reference: Bk. 1137 Fol. 225

SCALE 1: 1000

Distances are in metres

○ Denotes iron put except otherwise stated

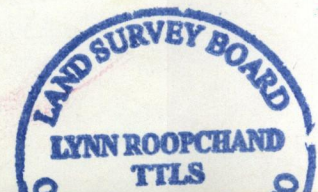
Bearings are Cassini Grid based on Solar Observations

PLAN of 3 parcels of land coloured pink in the Ward of Savana Grande
 Containing together two thousand six hundred and eighty nine point nine square metres
 Surveyed by me, with due authority, in January & November 2000
 In accordance with Rule 25(1) of the Land Surveyors' Regulations 1998, I certify that this plan is correct.

Checked by
 Entered 548 8/03

 22-08-13

L.A. Roopchand
 Trinidad & Tobago Land Surveyor 4/6/2001



Original Bk 1137:225

Lot A Vol. 4478 fol. 293 - Anthony Wayne Sewlal

Lot B Vol. 4478 fol. 303 - Charles Clarence Sewlal

Lot C Vol. 4478 fol. 313 - James Michael Sewlal



13 JUN 2001
Lands and
Surveys
Division
1267/211