

No 636

1282

38

Process ~~66001~~ 66001

R.P.O. Vol. 28

Fol. 627

Ward of Toco

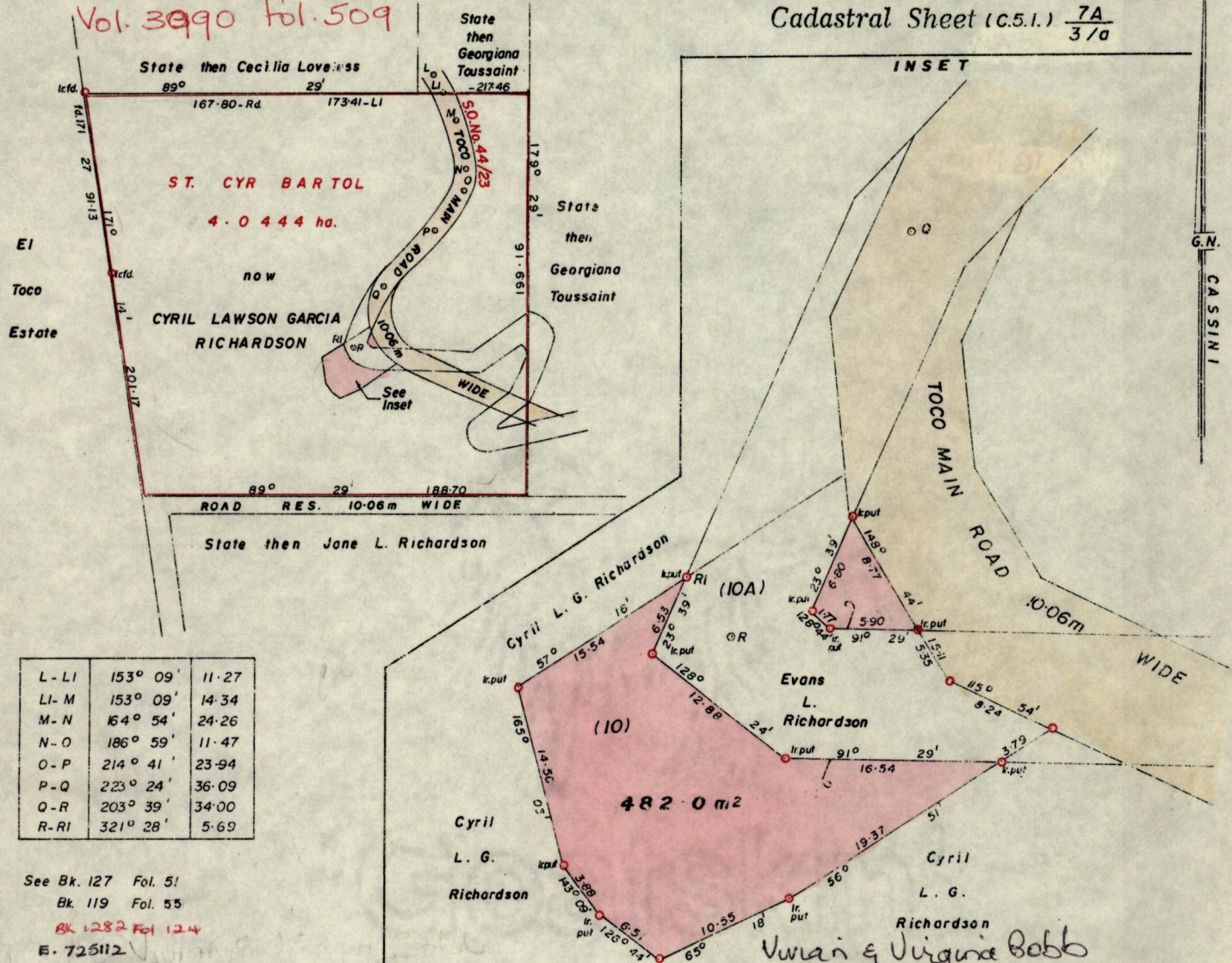
C.T. Vol.

Fol.

County of St. David

Vol. 3990 fol. 509

Cadastral Sheet (c.s.1.) 7A / 37a



See Bk. 127 Fol. 51
Bk. 119 Fol. 55

Bk. 1282 Fol. 12.4

E. 725112
N. 1196943

Approved

John Anshelbold
Director of Surveys
970506

Man & Virginia Bobb
SCALE 1:500
Distances are in metres

Bearings are based on solar observation
SCALE 1 inch to Four Chain

Note: To obtain compass bearings add/subtract 31 minutes Distances are in metres

PLAN of a Parcel of land coloured pink in the Ward of Toco
Containing four hundred and eighty two square metres

Surveyed by me, with due authority, in March 1996

I certify that I have complied with rule 76 under section 14(2)(d) of the
Land Surveyors' Ordinance 1952, and that this plan is correct.

Checked by *MA 16/4/97*

Mr. Sona

Entered *ASD 22/8/03*

Land Surveyor, Trinidad and Tobago *14th July 1996*

G.P., Tr./To.—L 1233—1,000—8/95

ENTERED: CMIS

Recvd 98 5 26