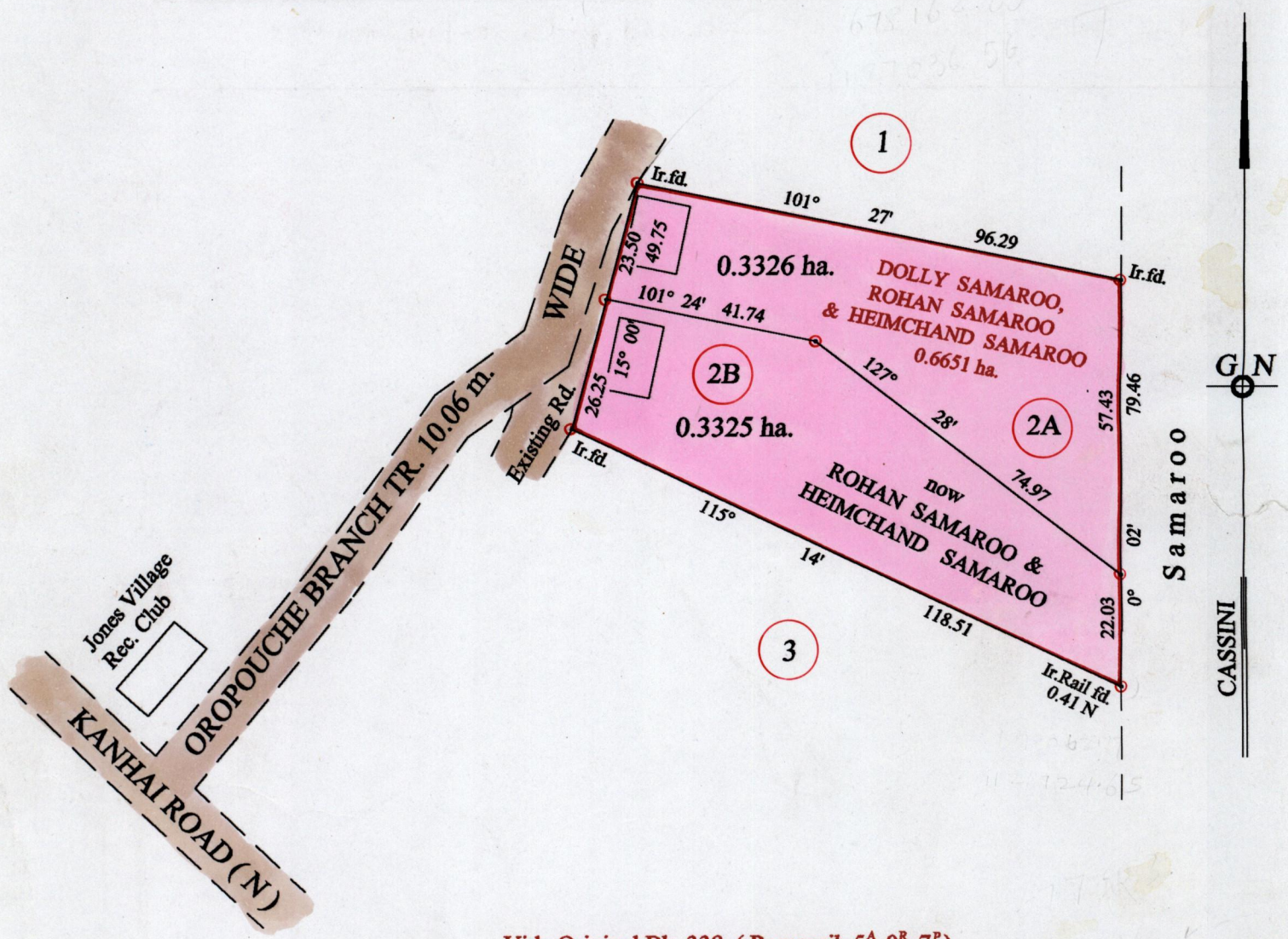


R.P.O. Vol. 108 Fol. 209  
C.T. Vol. 2971 Fol. 127  
Vol. 4403 fol. 345

Ward of Savana Grande  
County of Victoria  
Cadastral Sheet ( G.14.C ) 64.D.  
2/a

Process ID#66134



Vide Original Bk. 338 ( Ramgerib 5<sup>A</sup> 0<sup>R</sup> 7<sup>P</sup> )

Approved *[Signature]*  
Director of Surveys  
1022.07.24

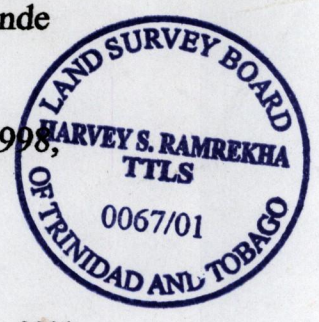
○ Denotes Iron put except stated otherwise.

SCALE : 1:1250  
Distances are in metres

Note: Bearings are cassini grid based on solar observations  
PLAN of 2 Parcels of land coloured pink in the Ward of Savana Grande  
Containing together zero point six six five one hectare  
Surveyed by me, with due authority, in January 2001  
In accordance with Rule 25 (1) of the Land Surveyors Regulations 1998,  
I certify that this plan is correct.

Checked by *[Signature]* 21.02.07.11

Entered on *[Signature]* 04/03/03 Trinidad & Tobago Land Surveyor ..... 19: 12: 2001  
*[Signature]* 10-06-13



552

No.	C.T. Volume	Name
2A	Vol. 4403 fol. 349	Heimchand Samaroo, Patricia Samaroo & Prakash Samaroo
2B	Vol. 4403 fol. 357	Rohan Samaroo, Bernadine Clifford & Stefan Samaroo



1271/43  
8 JAN 2002  
Lands and  
Surveys  
Division