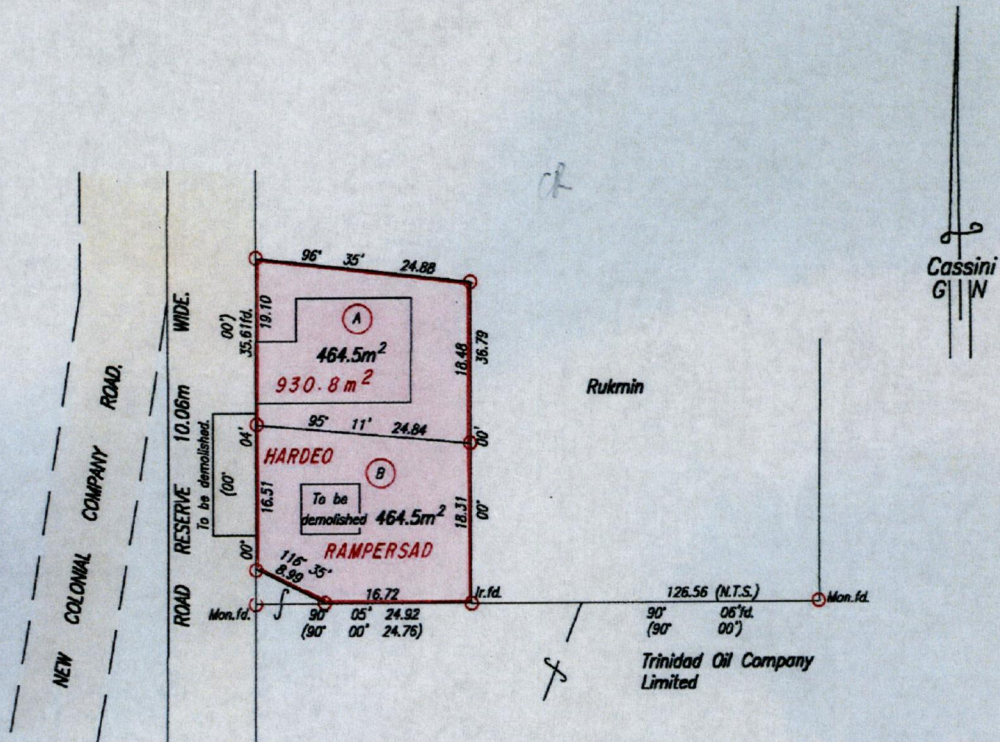


R.P.O. Vol. 131
C.T. Vol. 1746
Vol. 4494 fol. 511
See Bk. 999 fol. 2

Fol. 85
Fol. 579

Ward of Naparima
County of Victoria.
Cadastral Sheet G.14.A. & B. 64D
1/a



Approved *[Signature]*
Director of Surveys of
2007-04-27

Hardie Rampersad
SCALE 1:750
Distances are in Metres

○ Denotes Iron put except otherwise stated.
Bearings are based on Solar Observations

PLAN of 2 Parcels of land coloured pink in the Ward of Naparima.
Containing together nine hundred and twenty nine point zero square metres.
Surveyed by me, with due authority, in April, 1999
In accordance with Rule 25(1) of the Land Surveyors Regulations 1998,
I certify that this plan is correct.

Checked by *[Signature]* 01-04-23

Entered on *[Signature]* 04/14/03
Trinidad & Tobago Land Surveyor 4th December 2000