

1282

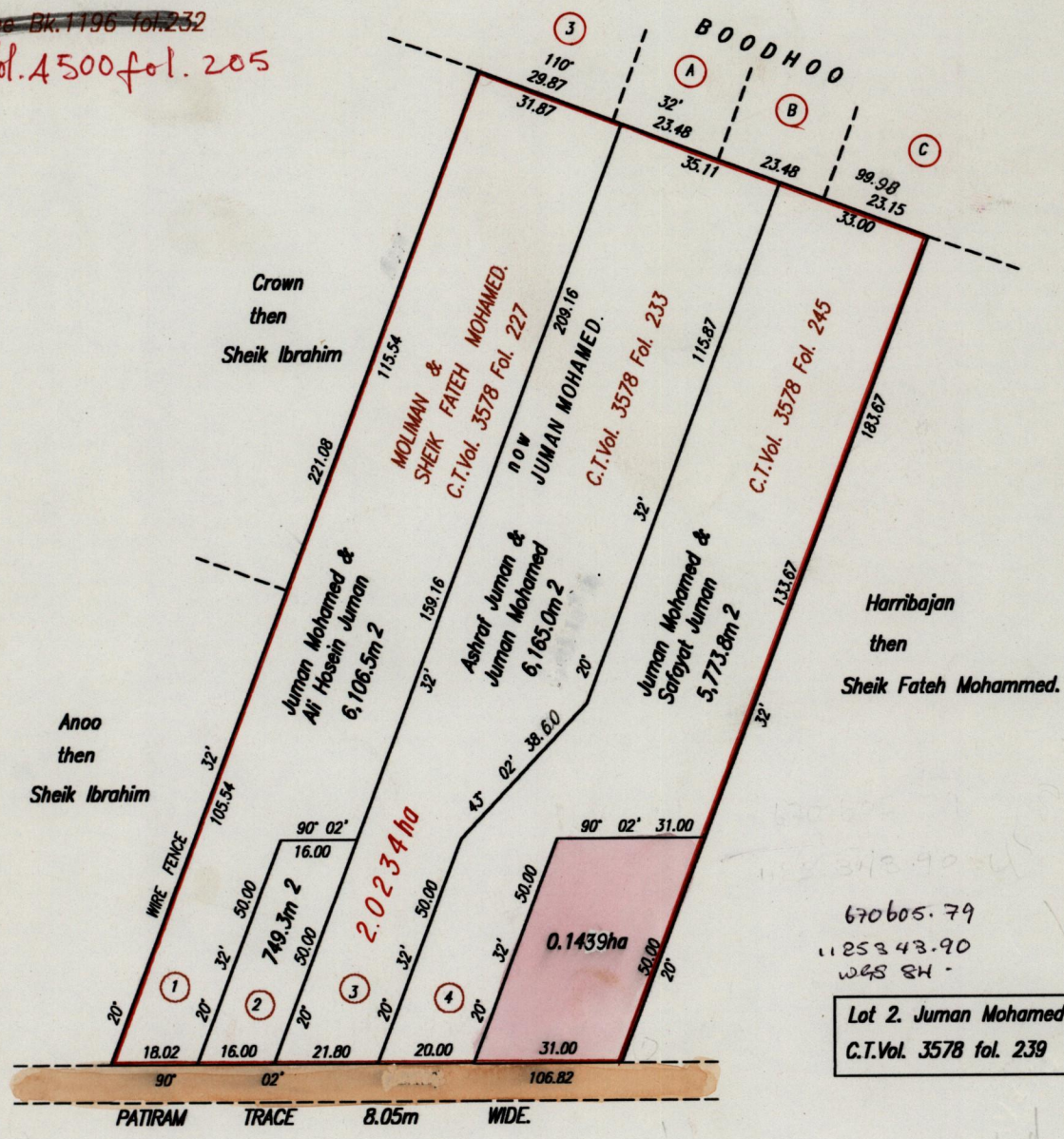
207

Process ID# 66120  
R.P.O. Vol. 92 Fol. 85  
C.T. Vol. 982 Fol. 233

REMAINING PORTION

Ward of Siparia.  
County of St. Patrick.  
Cadastral Sheet G.13.F. & G. 63F  
1/d

See Bk. 1196 fol. 232  
Vol. 4500 fol. 205



670605.79  
1125343.90  
w48 84

Lot 2. Juman Mohamed & Velina Bhairo  
C.T. Vol. 3578 fol. 239

Approved

*[Signature]*  
Director of Surveys  
2002-05-04

SCALE 1:1500  
Distances are in Metres

To obtain compass bearings subtract 2 minutes.

This is a true copy of a diagram of two point zero two three four hectares originally transferred to MOLIMAN & SHEIK FATEH MOHAMED, shewing a portion coloured pink and containing zero point one four three nine hectare being the remainder after four previous transfers of <sup>another</sup> ~~other~~ portion of land.

In accordance with Rule 25(1) of the Land Surveyors Regulations 1998, I certify that this plan is correct.

Checked by *[Signature]*

*[Signature]*

Entered 63F 8/03  
QMS 22-05-2013  
*[Signature]*

Trinidad & Tobago Land Surveyor . 9<sup>th</sup>. April . . . . 2001

