

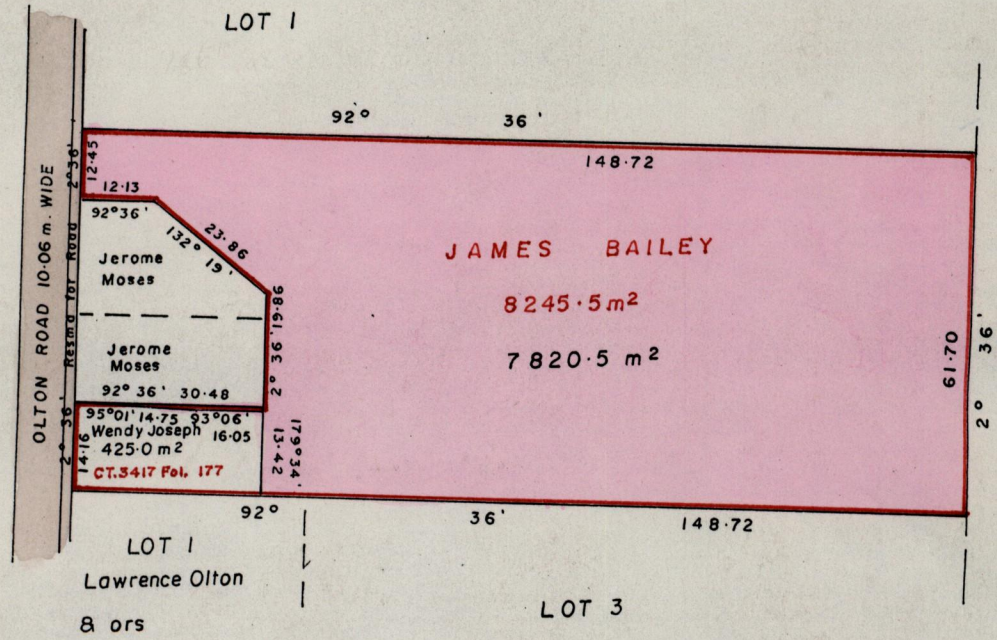
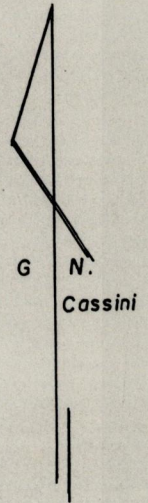
1282

195

1282

Process ID#66098
R. P. O. Vol Fol.
C. of T. Vol. 1643 Fol. 143
Vol. 4120 fol. 281

Cadastral Sheet B.22D. $\frac{24C}{17C}$
Ward of Arima
County of St. George



Approved
[Signature]
Director of Surveys
9/8/76

Anna Morris
S. Bailey & ORS

E. 688705
N. 1175748
Orig. Bk 970:43
SCALE : 1 / 1250

Note: To obtain compass bearings ^{add} _{subtract} 9 minutes

Distances are in metres

This is a true copy of a diagram of eight thousand two hundred and forty five point five square metres originally granted to James Bailey, shewing a portion coloured pink and containing seven thousand eight hundred and twenty point five square metres being the remainder after one (1) previous transfer of another portion of the land. the dividing lines having been run in conformity with Rule 76 under Sec. 7 (a) of Cap. 27. No. 2 and duly certified by the Director of Surveys.

Checked by A. D. 25-6-98
Entered on 2400 11/03
ENTERED ON CNIS

Arnold A. J. Ramon, T.T.L.S. ARICS.
12th June 1998.