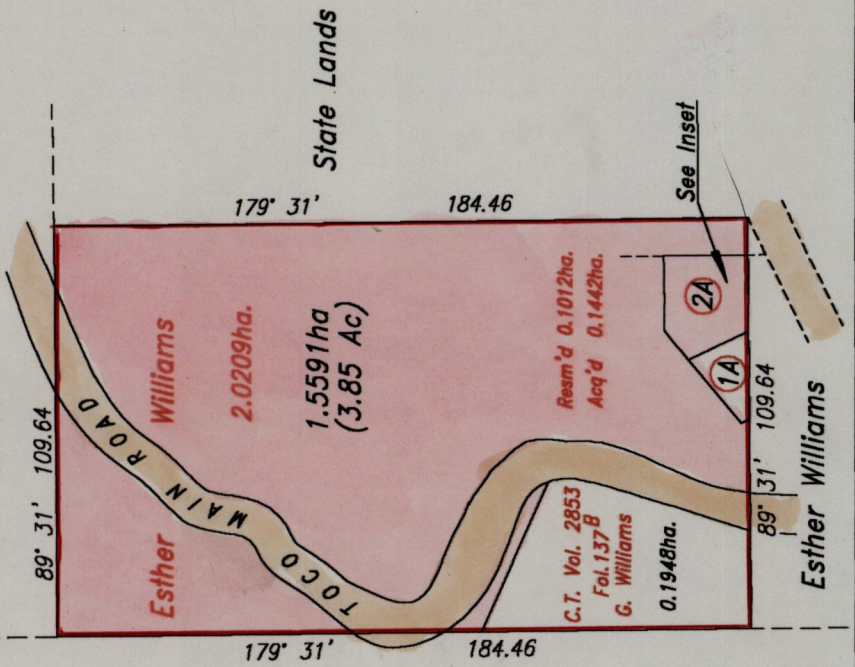


R.P.O. Vol. 94 Fol. 125  
 C.T. Vol. 1345 Fol. 217  
 Vol. 4484 fol. 373

Ross 66085

J.T. Griffith  
 then  
 M. Celestine

Francis Smith



SCALE 1/2000

Distances are in metres

This is a true copy of a diagram of two point zero two zero nine hectares originally transferred to Esther Williams showing a portion coloured pink and containing one point five five nine one hectares being the remainder after two (2) previous transfers one (1) acquisition and one (1) resumption of another portion of land in accordance with Rule 25 (1) of the Land Surveyors Regulations 1998.

I certify that this plan is correct.

Checked by *[Signature]* 2002.6.24

Entered by *[Signature]* 1/03 Trinidad and Tobago, Land Surveyor 25<sup>th</sup> October 2001.

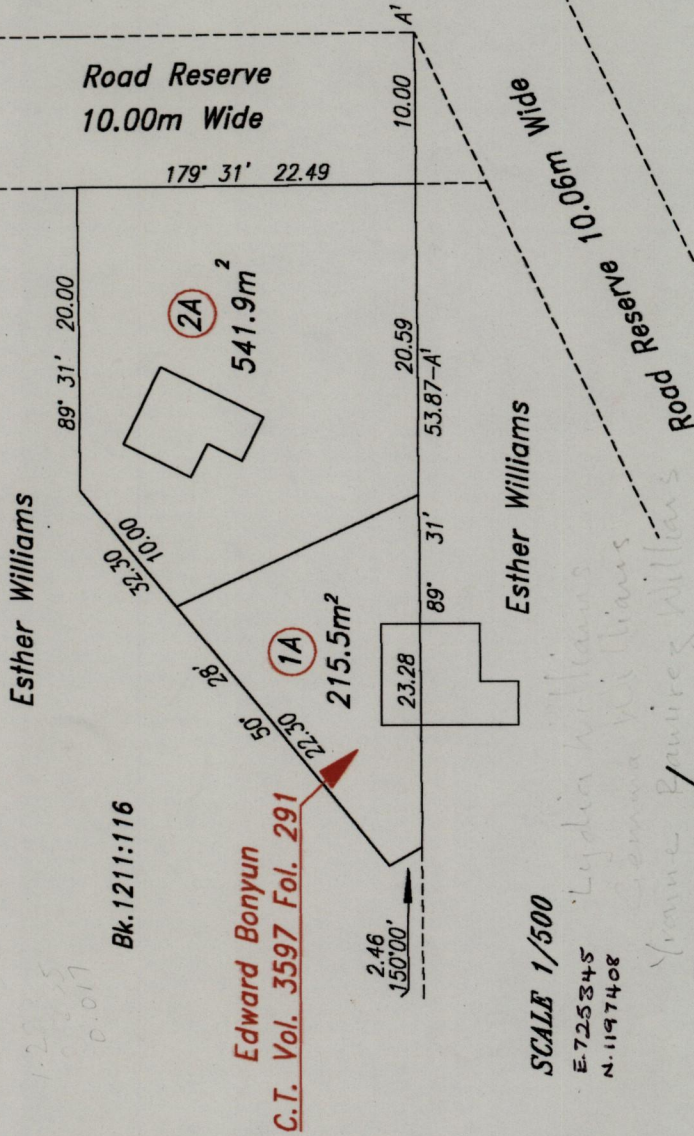
ENTERED: CMIS

Remaining Portion Plan

Cadastral Sheet C.5.I. 7 A&D  
 3/a  
 Ward of Toco  
 County of St. David

located (7)

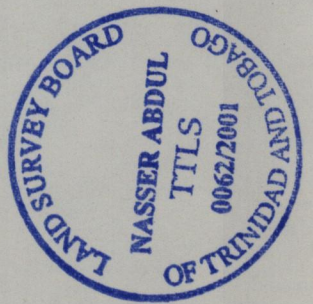
INSET



SCALE 1/500

E. 725345  
 N. 1197408

Approved by *[Signature]*  
 Director of Surveys  
 25.07.03



*[Signature]*

1282

190