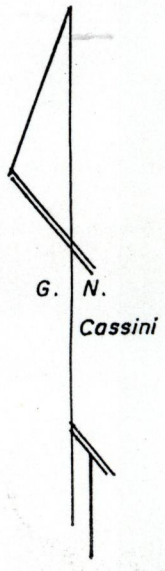
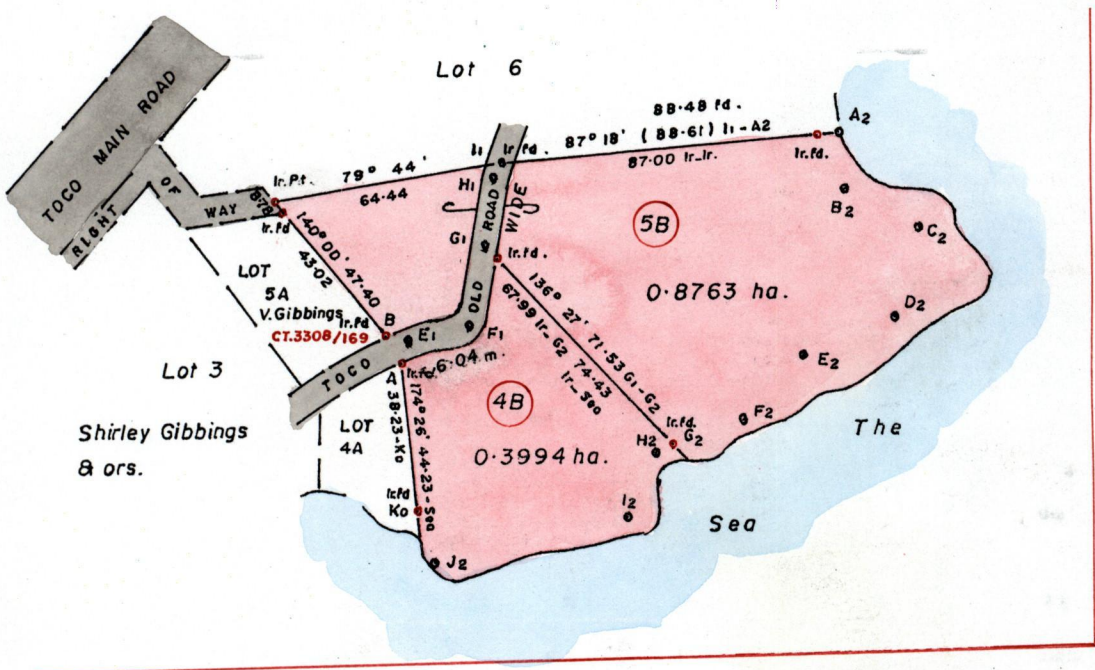


INSET
 SCALE: 1 / .200
 Distances are in metres

Ward of Toco
 County of St. David
 Cadastral Sheet C.9.L. $\frac{6F}{4/bB4/d}$

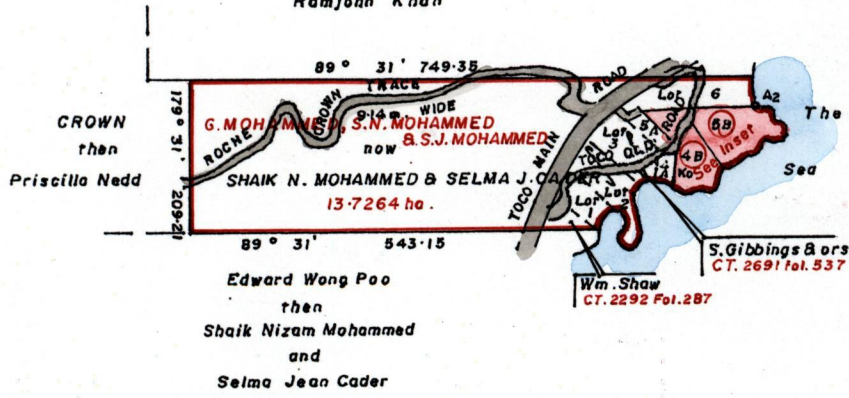


Sta.	Bear.	Dist	
A - E1	27° 11'	5.82	(fd)
B - E1	97° 15'	4.87	
E1 - F1	80° 01'	18.11	
F1 - G1	11° 31'	20.38	
G1 - H1	11° 31'	18.85	
H1 - I1	19° 31'	7.24	

Along Center of Road 6.04m. wide

Jos. Lee Yuen
 then
 Ramjohn Khan

E. 724192
 N. 1190786



cf: L&S. Bk. 1128 Fol. 98
 L&S. Bk. 1189 Fol. 8

Approved

[Signature]
 Director of Surveys of
 25/10/98

SCALE: 1 / 10,000

Note: To obtain compass bearings add/subtract 29 minutes Distances are in metres
 PLAN of ~~2~~ Parcel(s) of land coloured pink in the Ward of Toco
 Containing together one point two seven five seven hectares
 Surveyed by me, with due authority, in May 1998
 In accordance with Rule 25 (i) of the Land Surveyors' Regulations 1998,
 I certify that this plan is correct.

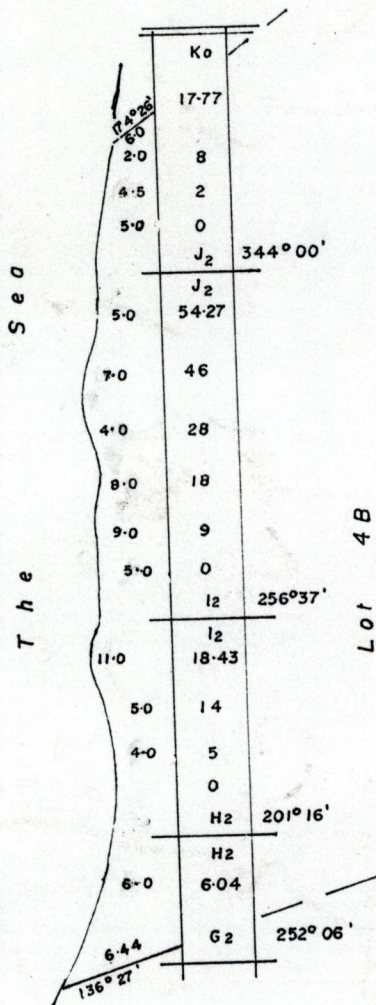
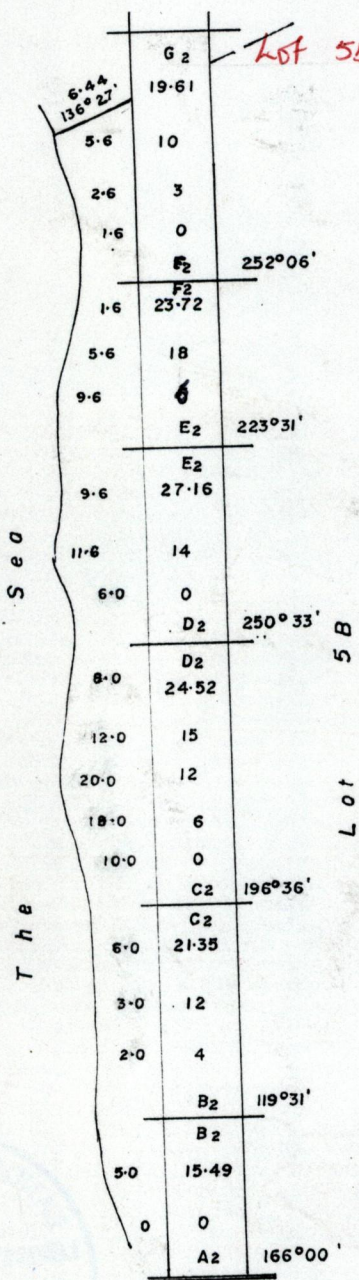
Checked by SH 00.05.24
 Entered GF 7/103
 ENTERED: CMIS: *[Signature]*

[Signature]
 Land Surveyor, Trinidad 23 August 1999

FOR NOTES: SEE OVERLEAF

Lot 4B - Vol. 4234 fol 315 - Shaik Mohammed & Ors.

Lot 5B - Vol. 4234 fol 317 - Shaik Mohammed & Ors.



1249 Vol 2 77149