

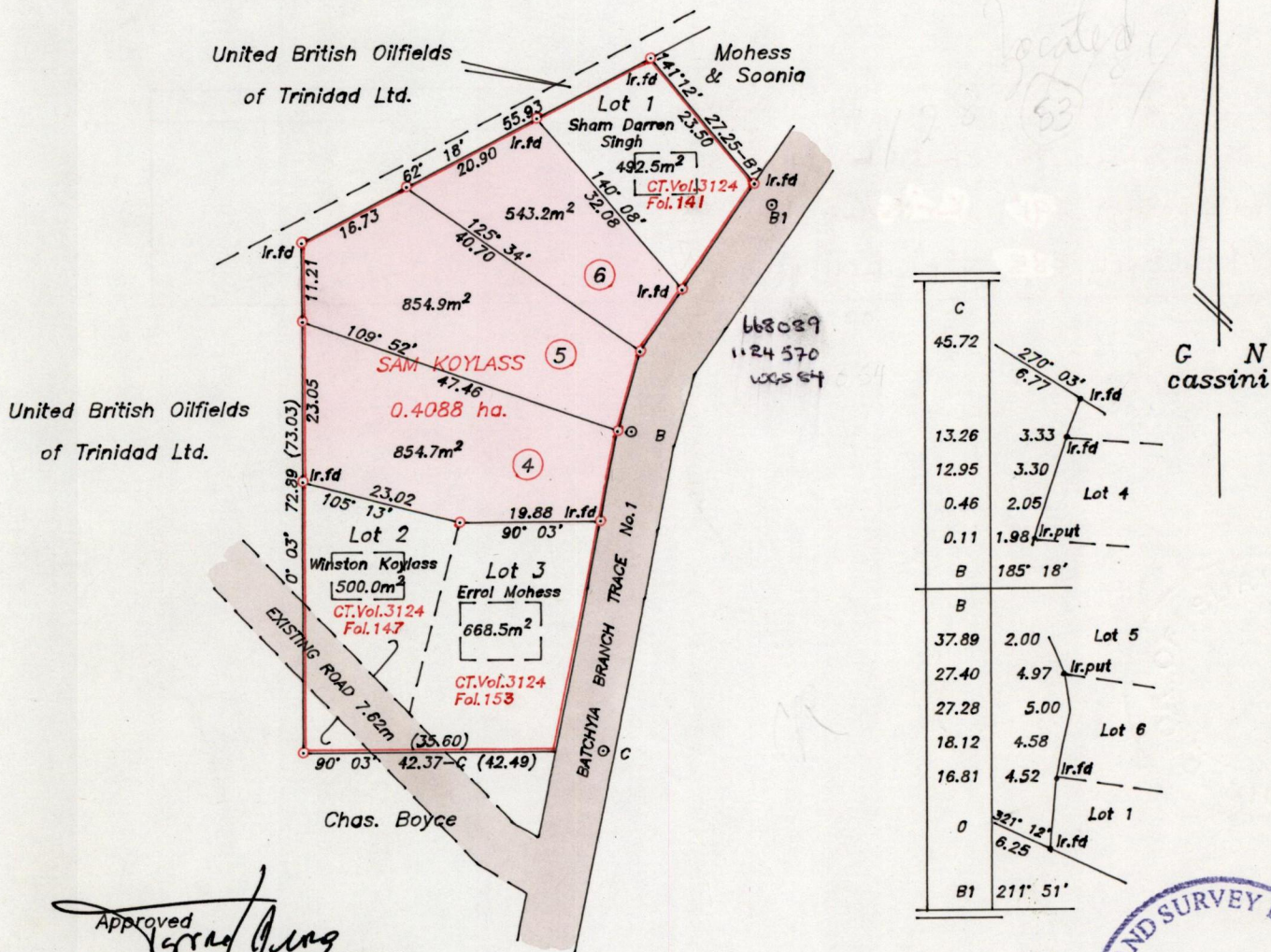
Process ID#66041  
R.P.O. Vol. 134 Fol. 41

C.T. Vol. 2798 Fol. 309  
Vol. 4468 fol. 269

1282 1282 Ward of Siparia

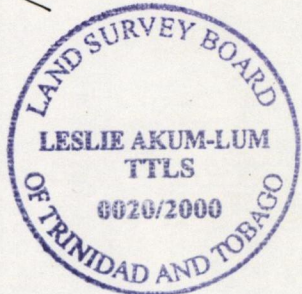
County of S. Patrick

Cadastral Sheet G.13.1 63E  
4/b



Approved  
*[Signature]*  
Director of Surveys  
2001-05-29

See Bk.1137 Fol.16  
See Bk.1163 Fol.45



SCALE 1/1000  
Distances are in metres

○ Denotes Iron put at each corner except where otherwise indicated.  
Note: To obtain compass bearings subtract 3 minutes.

PLAN of 3 Parcels of land coloured pink in the Ward of Siparia  
Containing together two thousand two hundred and fifty two point eight square metres  
Surveyed by me with due authority in October 1999

In accordance with rule 25 (1) of the Land Surveyors' Regulations 1998,  
I certify that this plan is correct.

Checked by.....  
Entered... *[Signature]* ...  
Trinidad & Tobago, Land Surveyor... *[Signature]* ...  
Volume4\Projects\Lal\KoylassSam

No	C.T. Volume	Name
4	Vol. 4468 fol. 275	Rita Koylass
5	Vol. 4468 fol. 283	Inarie Koylass
6	Vol. 4468 fol. 291	Kris Koylass

22 SEP 2000  
Land and  
Surveys  
Division

1267/17