

12832

L. & S.—54

16

B No 1108

Process ID# 65928

R.P.O. Vol. 1666

Fol. 97

City of Port-of-Spain

C.T. Vol. 2863

Fol. 243

County of St. George

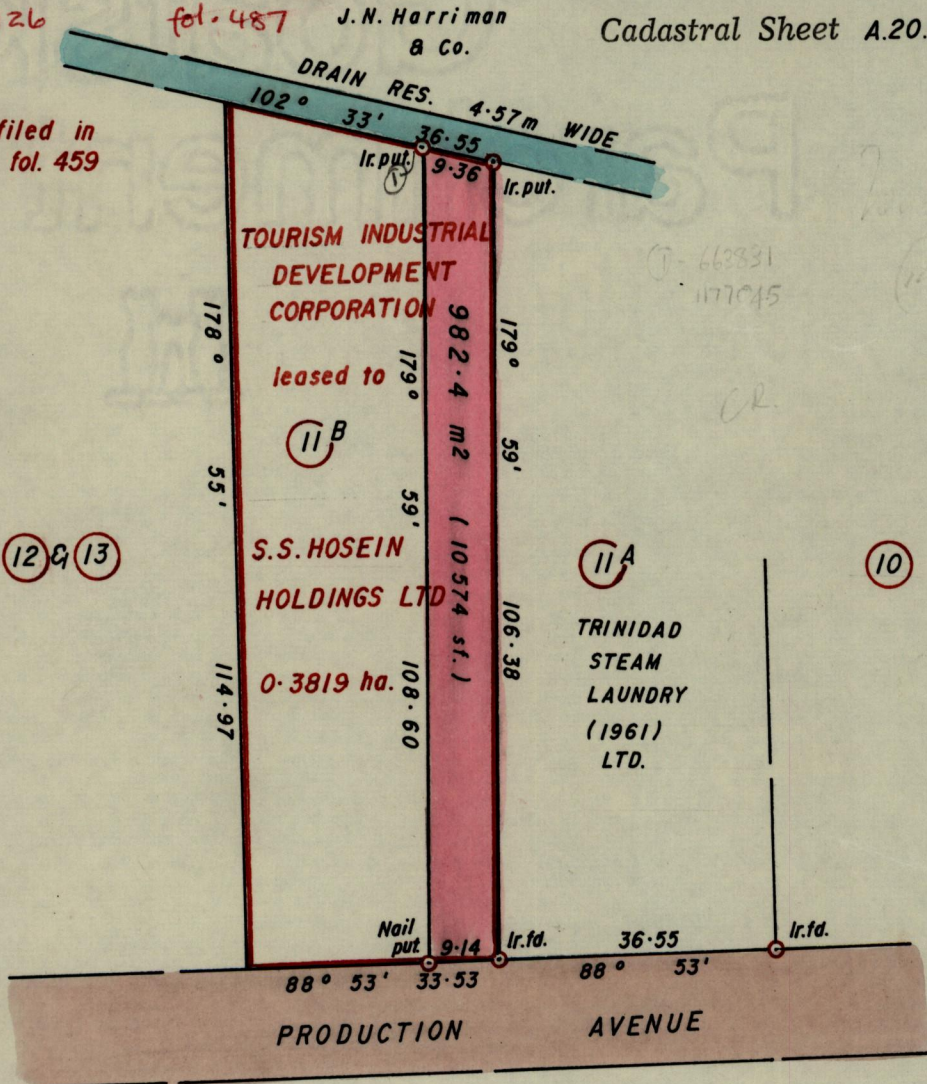
V.S. 4126

fol. 487

J.N. Harriman & Co.

Cadastral Sheet A.20.0. <sup>238</sup>/<sub>10</sub>

General Plan filed in C.T. Vol. 1754 fol. 459



Approved

*Yvonne Perry*  
Director of Surveys  
29.1.13

Trinidad Steam Laundry

SCALE 1:1000

Ref. Plans P.K.78  
Original F.I.9.

Note: To obtain compass bearings add/subtract

minutes

Distances are in metres.

PLAN of a Parcel of land coloured pink in the City of Port-of-Spain  
Containing nine hundred and eighty two point four square metres.  
Surveyed by me, with due authority, in July 1997

I certify that I have complied with rule 76 under section 14(2)(d) of the  
Land Surveyors' Ordinance, 1952, and that this plan is correct.

Checked by

*L. Belmont*

*Lawrence Clarke*

Entered 238 @ 7/03

Entered: T. Belmont

Land Surveyor, Trinidad  
and Tobago

15<sup>th</sup> July 1998  
LAWRENCE CLARKE  
LAND SURVEYOR