

1282

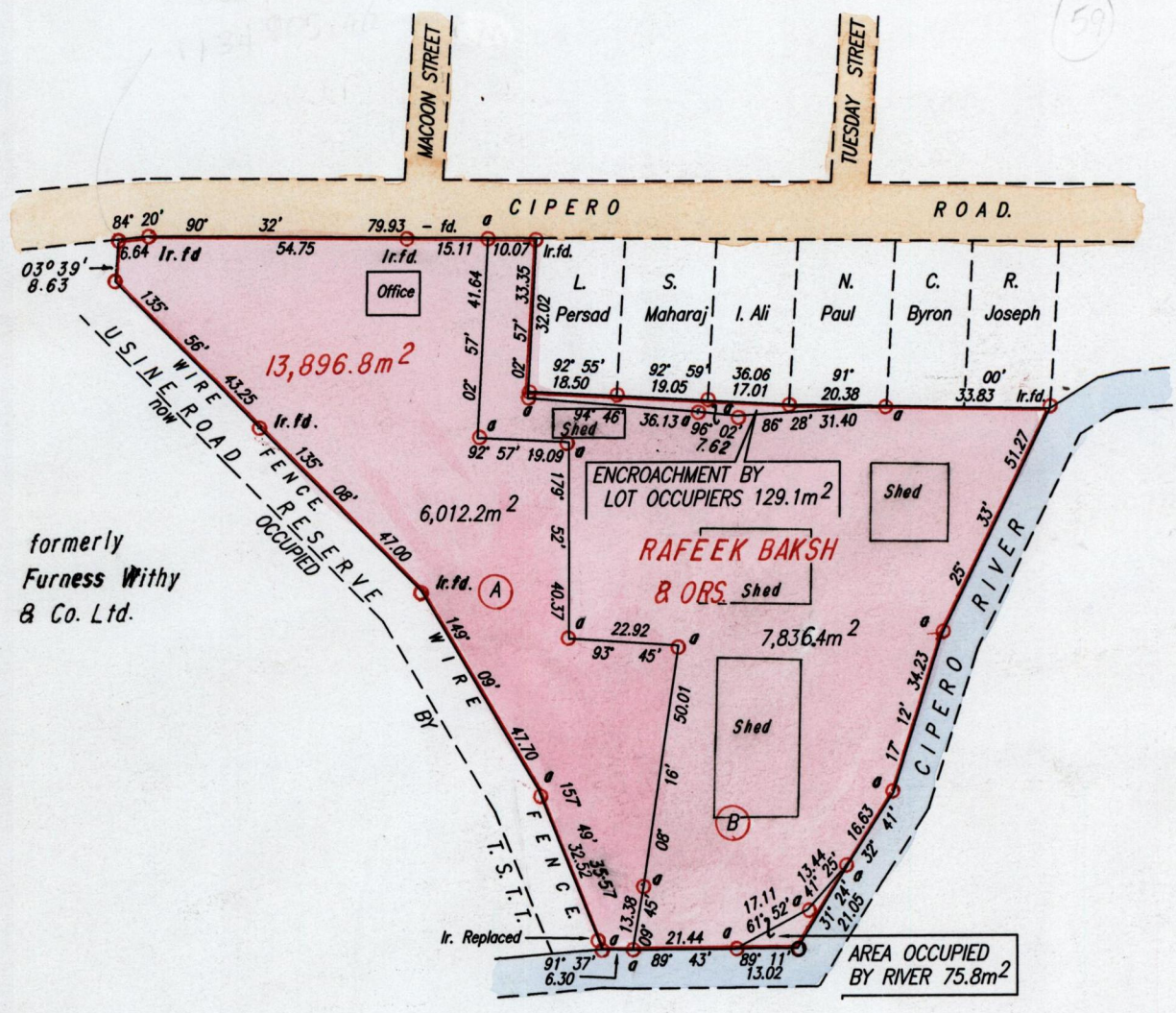
15

Process ~~104~~ 65927
R.P.O. Vol.
C.T. Vol. 3342
VSL. 4427

Fol.
Fol. 379
fol. 209

Ward of Naparima
County of Victoria
Cadastral Sheet G.3.N, 3/a & 3/c

59



Cassini
G | N

formerly
Furness Withy
& Co. Ltd.

Approved
[Signature]
Director of Surveys
2002-03-20

Note: \odot = \odot Denotes Iron put except otherwise stated.
Bearings are based on Solar Observations
PLAN of 2 Parcels of land coloured pink in the Ward of Naparima
Containing together one point three eight four nine hectares.
Surveyed by me, with due authority, in September, 2001
In accordance with Rule 25(1) of the Land Surveyors Regulations 1998,
I certify that this plan is correct.

SCALE 1:1500
Distances are in Metres



Checked by *[Signature]* 15/3/02

Entered on 53F 7/03
0113 29-05-2013
[Signature]

[Signature]
Trinidad & Tobago Land Surveyor 27th November 2001

Plan. E.K. 89

Lot A - Vol. 4427 fol. 215 - Rafeek, Baksh and Ors

Lot B - Vol. 5113 fol. 321 - Carib Asphalt Pavers Ltd.

12 DEC 2001
Lands and
Surveys
Division

1282/15
1267/235