

C.T. Vol. 2990 Fol. 263

C.T. Vol. 3621 Fol. 477

U.P.R.N. No.

Vol. 4436 Fol. 117

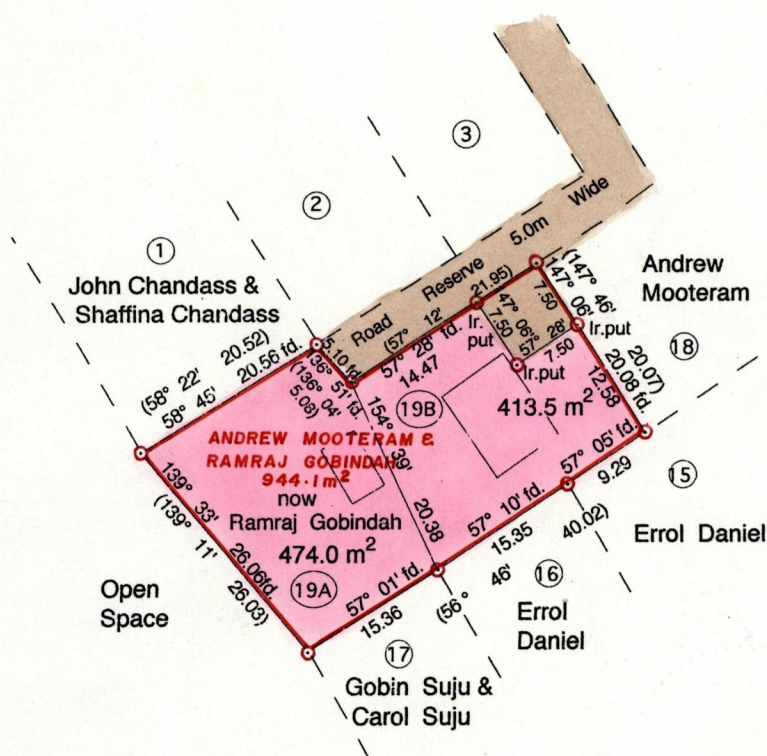
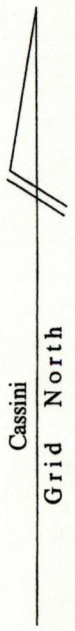
Process ID# 66181

Cadastral Sheet B.20.M. 24C
2/c

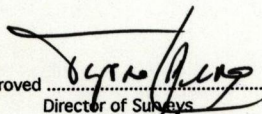
Borough of Arima

County of St. George

Vide Plan J.A. 56



E. 689052
N. 1176568

Approved 
Director of Surveys
2002.09.10



OR

JASB

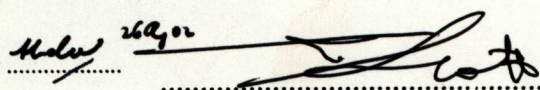
SCALE 1:750


Distances are in metres


○ Denotes Iron Found unless otherwise stated.

Bearings are Cassini Grid based on Solar Obs.
To obtain compass bearings add 11 minutes

PLAN of 2 Parcels of land coloured pink in the Borough of Arima
Surveyed by me with due authority in November 1998 at the request of Ramraj Gobindah
Containing together eight hundred and eighty seven point five square metres
In accordance with rule 25 (1) of the Land Surveyors' Regulations 1998
I certify that this plan is correct.

Checked by 

Entered on 24/2/02 9103 Trinidad & Tobago Land Surveyor  11th December 2001

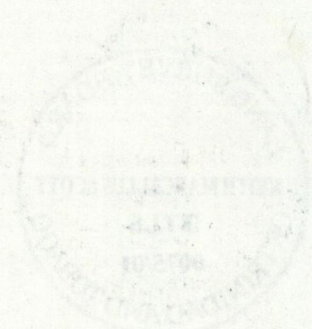
ENTERED: 

See J.A 56

CT 100200 Fol 100
CT 100201 Fol 101
U.P.R.N. No.

19A Vol. 4456 fol. 195 Ramraj & Debbie Gobintah

19B. Vol. 4456 fol. 185 Angela & Franklyn Kalloo



24 JAN 2002
Lands and
Surveys
Division

1271/01