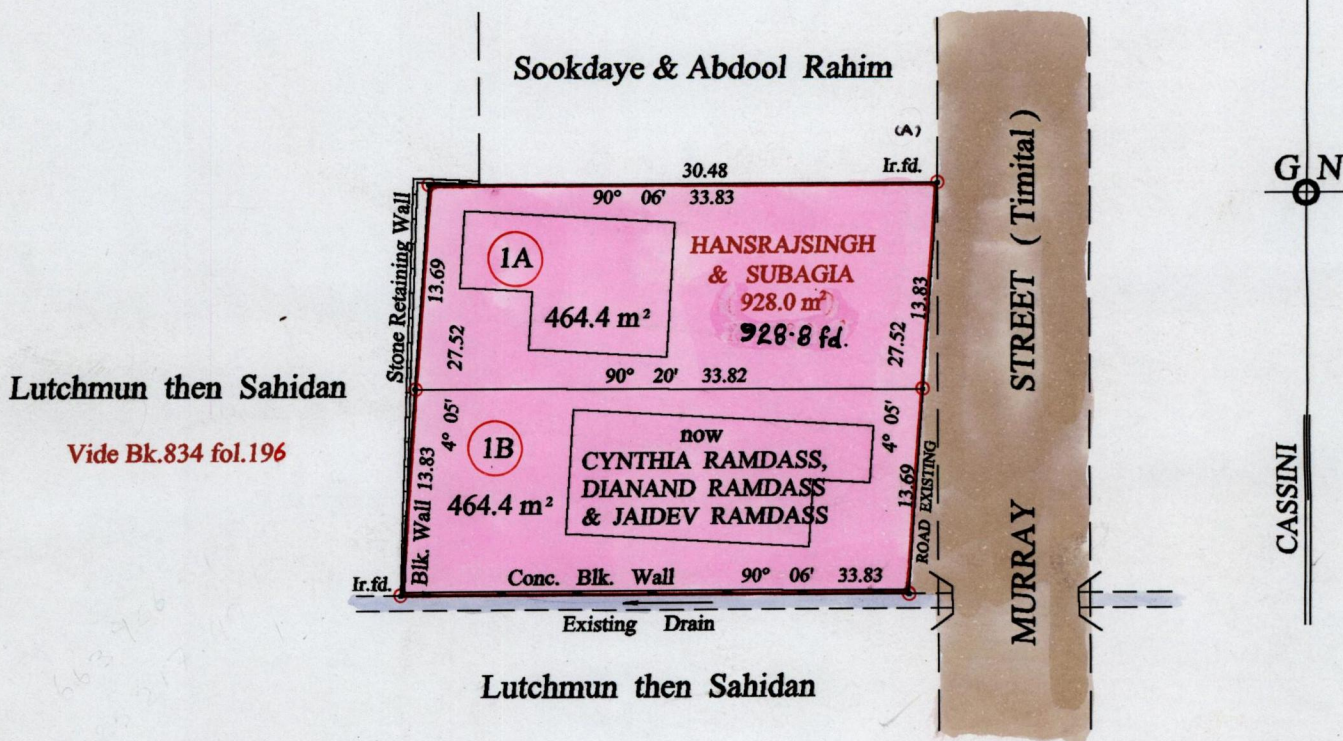


1202
1282

Process ID# 65923
R.P.O. Vol. 84 Fol. 417
C.T. Vol. 962 Fol. 375
Vol 4442 fol 347

Ward of Siparia
County of St. Patrick
Cadastral Sheet (G.12.G) 63.E.
1/c



Lutchmun then Sahidan
Vide Bk.834 fol.196

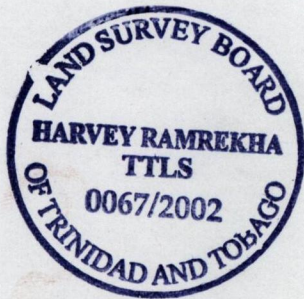
W- 663956.51
112521749
WGS 84

Vide Bk.798 fol.180

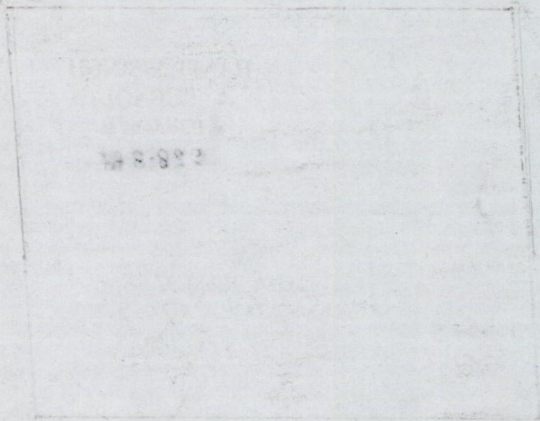
Approved... *[Signature]*
by Director of Surveys 2003.2.5

○ Denotes Iron put except stated otherwise. SCALE : 1:500
Note: Bearings are cassini grid based on solar observations Distances are in metres
PLAN of 2 Parcels of land coloured pink in the Ward of Siparia
Containing together nine hundred and twenty eight point eight square metres
Surveyed by me, with due authority, in July 2001
In accordance with regulation 25 (1) of the Land Surveyors' Regulations 1998,
I certify that this plan is correct.

Checked by M.M. 13/1/03 *[Signature]*
Entered on *[Signature]* 7/03 Trinidad & Tobago Land Surveyor 17.04.2002
CASS 10-07-2013



Lot 1A - vol. 4442 fol. 353 - Jaidev Ramdass
Lot 1B - vol. 4442 fol 361 - Dianand Ramdass



18 APR 2002
Lands and
Surveys
Division

1271/250